



Environment and Social Impact Assessment Report (Scheme D, Volume Ⅷ)

**Jharkhand Urja Sancharan
Nigam Limited**

Final Report

January 2018

www.erm.com

Jharkhand Urja Sancharan Nigam Limited

Environment and Social Impact Assessment Report (Scheme D, Volume 02)

31 January 2018

Reference # 0402882

Reviewed by: **Avijit Ghosh**
Principal Consultant



Approved by: **Debanjan
Bandyapodhyay**
Partner



This report has been prepared by ERM India Private Limited a member of Environmental Resources Management Group of companies, with all reasonable skill, care and diligence within the terms of the Contract with the client, incorporating our General Terms and Conditions of Business and taking account of the resources devoted to it by agreement with the client.

We disclaim any responsibility to the client and others in respect of any matters outside the scope of the above.

This report is confidential to the client and we accept no responsibility of whatsoever nature to third parties to whom this report, or any part thereof, is made known. Any such party relies on the report at their own risk.

TABLE OF CONTANT

EXECUTIVE SUMMERY	I
1 INTRODUCTION	1
1.1 BACKGROUND	1
1.2 PROJECT OVERVIEW	1
1.3 PURPOSE AND SCOPE OF THIS ESIA	2
1.4 STRUCTURE OF THE REPORT	2
1.5 LIMITATION	3
1.6 USES OF THIS REPORT	3
2 POLICY, LEGAL AND ADMINISTRATIVE FRAME WORK	5
2.1 APPLICABLE LAWS AND STANDARDS	5
2.2 WORLD BANK SAFEGUARD POLICY	8
3 PROJECT DESCRIPTION	10
3.1 REGIONAL SETTING	10
3.2 PROJECT LOCATION	10
3.2.1 Location	10
3.2.2 Accessibility	10
3.3 SITE SETTING	11
3.3.1 Project Site	11
3.3.2 Site Vicinity	13
3.4 PROJECT COMPONENTS	16
3.5 PROJECT TIMELINE AND PROJECT COST	16
3.6 RESOURCE	17
3.7 DISCHARGES AND WASTES	17
4 ESIA METHODOLOGY	18
4.1 SCREENING & SCOPING	18
4.2 BASELINE STUDIES	19
4.3 IMPACT IDENTIFICATION AND ASSESSMENT	19
4.3.1 Impact Assessment	19
4.4 ENVIRONMENTAL AND SOCIAL MANAGEMENT PLAN PREPARATION	20
5 DESCRIPTION OF THE ENVIRONMENT	21
5.1 INTRODUCTION	21
5.2 LAND USE/LAND COVER	21
5.3 SOIL	23
5.4 CLIMATE AND METEOROLOGY	23
5.5 NATURAL HAZARD	24
5.6 AIR & NOISE ENVIRONMENT	24
5.7 DRAINAGE	24
5.8 GROUND WATER RESOURCES	25

5.9	SURFACE WATER	26
5.10	ECOLOGICAL ENVIRONMENT	26
5.10.1	<i>Vegetation within the Study area</i>	27
5.10.2	<i>Wildlife Habitat and Faunal Diversity</i>	27
5.11	SOCIO ECONOMIC ENVIRONMENT	28
5.11.2	<i>Education profile</i>	32
5.11.3	<i>Skill of the Surveyed Population</i>	36
5.11.4	<i>Drinking Water & Sanitation Facilities</i>	37
5.11.5	<i>Irrigation</i>	37
5.12	HEALTH INFRASTRUCTURE	37
5.13	OTHERS PHYSICAL INFRASTRUCTURE	38
6	IMPACT ASSESSMENT AND MITIGATION MEASURES	39
6.1	POTENTIAL IMPACT	39
6.1.1	<i>Impacts on Aesthetics & Visual Quality</i>	42
6.1.2	<i>Air & Noise Quality</i>	42
6.1.3	<i>Impact on Land use, Soil & Drainage</i>	43
6.1.4	<i>Impact on Water Resources</i>	44
6.1.5	<i>Impact on Biological Environment</i>	45
6.1.6	<i>Impact on Socio-economic Conditions</i>	46
6.1.7	<i>Impact on Community Health and Safety</i>	46
6.1.8	<i>Occupational, Health and Safety</i>	47
7	STAKEHOLDER ENGAGEMENT	49
7.1	INTRODUCTION	49
7.2	IDENTIFICATION OF STAKEHOLDERS	49
7.3	SUMMARY OF STAKEHOLDER CONSULTATIONS	50
8	ENVIRONMENTAL AND SOCIAL MANAGEMENT PLAN	52
8.1	MITIGATION MEASURES & MANAGEMENT PLAN	52
8.2	ENVIRONMENTAL MONITORING & REPORTING	59
8.3	INSTITUTIONAL SETTING AND IMPLEMENTATION ARRANGEMENTS	63
8.4	COMMUNICATION PLAN	63
8.5	GRIEVANCE MECHANISM	64
9	CONCLUSION AND RECOMMENDATION	66

LIST OF TABLE

Table 1.1	Details of the substation and interlinked project (Scheme P)	2
Table 2.1	Regulation Triggered for the Project	5
Table 2.2	World Bank Policies Triggered for the Project	8
Table 3.1	Salient Features of the Project Location	10
Table 3.2	Project Components in the 132/33 KV Substation at Angara	16
Table 3.3	Resource Requirement in Construction and Operation of 132/33 KV Grid Substation at Angara	17
Table 3.4	Emission and Discharges from 132/33 KV Grid Substation	17
Table 5.1	Existing Land Use/ Land Cover Pattern of the Study Area	21
Table 5.2	Demographic profiles of the villages located within study area	29
Table 4.3	Demographic profiles of the Surveyed Population	30
Table 5.3	Schools facilities in study area	34
Table 5.4	Occupational pattern of villages in the study area	34
Table 5.5	Health care facilities in study area	37
Table 6.1	Environmental and Social Impact Identification Matrix	40
Table 7.1	List of key stakeholders	50
Table 7.2	Stakeholders and Key Points Discussed	51
Table 8.1	Environment and Social Management Plan	53
Table 8.2	Environment and Social Monitoring Plan	60
Table 8.3	Summary of Consultation Framework	63

LIST OF FIGURE

Figure 3.1	Location, Site Boundary and Access shown on Satellite Imagery (along with adjacent settlements)	11
Figure 3.2	Contours of the Proposed Angara Substation Site	12
Figure 3.3	Site boundary superimposed on the Mouza map of Hesal village	13
Figure 3.4	Photographs of Site Surrounding	15
Figure 3.4	Typical Layout of a 132/33 KV substation Planned in the JPSIP	16
Figure 4.1	Impact Assessment Process	20
Figure 5.1	Land Use/ Land Cover Map of the Study Area	22
Figure 5.2	Soil at Project Site	23
Figure 5.3	Drainage Map of the Study Area	25
Figure 5.4	Age Group Distribution of the Surveyed Population	30
Figure 5.4	Proportion of SC/ST Population in the Study Area vis-à-vis Block/District	31
Figure 5.6	Caste Distribution of the Surveyed Population of Hesal Village	32
Figure 5.5	Literacy profile of the study area villages	32
Figure 5.8	Educational Status of the Surveyed Population	33
Figure 4.9	Employment Status of the Surveyed Population	36
Figure 5.10	Occupational Pattern of the Surveyed Population	36
Figure 7.1	Consultations with Local Communities	50
Figure 1.1	Location of Hargari in Mouja Sheet	xxi
Figure 1.2	Location of Hargari on Satellite Imagery	xxii
Figure 1.3	Location of Hesal Village and Access Road of Hargari Site	xxii
Figure 1.4	Photographs of Hargari Site	xxiii
Figure 1.5	Consultation with Local People	xxiii

LIST OF ANNEXURE

<i>Annexure 1: List of Sub Projects in JPSIP</i>	<i>I</i>
<i>Annexure 2: General Conditions of Contract</i>	<i>V</i>
<i>Annexure 3: Special Conditions of Contract</i>	<i>XV</i>
<i>Annexure 4: Format for Reporting of ESMP Implementation</i>	<i>XVII</i>
<i>Annexure 5: Special Study on Hargari of Munda Tribe</i>	<i>XX</i>
<i>Annexure 6: Format for Registering Grievance from Community/ PAP</i>	<i>XXV</i>
<i>Annexure 7: DGMS Prescribe Permissible Limit of Vibration</i>	<i>XXVIII</i>
<i>Annexure 8: Management Plan for Labour Influx</i>	<i>XXX</i>
<i>Annexure 9: Socio Economic Survey Formats</i>	<i>XXXVIII</i>
<i>Annexure 10: Assessment of Impact Significance</i>	<i>XLII</i>

ABBREVIATIONS

BMTPC - Building Material and Technology Promotion Council of India
CEA – Central Electricity Authority
CFC - Chlorofluorocarbon
CGWB – Central Groundwater Authority Board
CPCB – Central Pollution Control Board
dB - Decibel
DG -Diesel Generator
DVC - Damodar Valley Corporation
EA – Environmental Assessment
EMP – Environmental Management Plan
ERM – Environmental Resources Management
ESIA – Environmental and Social Impact Assessment
ESIA- Environmental and Social Impact Assessment
ESMF- Environmental and Social Management Framework
ESZ – Eco-Sensitive Zone
GCC- General Conditions of Contract
GM – Gair Mazrui
GOI – Government of India
GPS – Global Positioning System
GSS – Grid Sub Station
IESE - Initial Environmental and Social Examination
IMD – India Meteorological Department
IS – Indian Standard
IUCN – International Union for Conservation of Nature
IWPA – Indian Wildlife Protection Act
JPSIP- Jharkhand Power System Improvement Project
JUSNL - Jharkhand Urja Sancharan Nigam Limited
KL- Kilo Litre
KLD – Kilo Litre per Day
Km – Kilometer
KVA – Kilo-Volts-Ampere
MVA – Mega-Volts-Ampere
NBWL – National Board of Wildlife
NH- National Highway
PCB – Pollution Control Board
PCB – Polychlorinated Biphenyls
PfA – Power for All
PPP – Public Private Partnership
PUCC – Pollution Under Control Certificate
SCC- Special Conditions of Contract
SF6 –Sulfur Hexafluoride
TCE – TATA Consulting Engineer
TL – Transmission Line
WPR- Work Participation Ratio

EXECUTIVE SUMMERY

The Jharkhand Urja Sancharan Nigam Limited (JUSNL) with financial assistance from the World Bank is implementing transmission infrastructure development/upgradation under the Jharkhand Power System Improvement Project (JSIP) and will include: (a) Creation of 25 new 132 KV substations, and (b) Development of the associated 132 KV transmission lines of around 1800 kms. These 25 substations and associated transmission lines have been organized into 26 schemes. The proposed new 132 KV Grid substation at Angara is covered under the **Scheme P Volume 1**.

The proposed substation at Angara would be located on Plot no. 4201 of the Hesal Village, Angara Block in Ranchi District. Out of the entire plot of land which is approximately 21 Acres of which 10.0 acres has been already allotted to JUSNL by the District Collector Ranchi for development of the substation. The site is connected to National Highway 33 and the State Highway 1 (Ranchi-Purulia Road) by the Hesal –Baheya village road.

The project activities would involve the design, construction and operation of a 132/33 KV Sub-station. The key components of the project would include: 3 nos. 50 MVA oil cooled transformer, incoming and outgoing bays connecting to the transmission line, control room and residential quarters for JUSNL employees. Setting up of the sub-station would involve a permanent change in land use from presently forest land to infrastructure. Construction activities are expected to cause temporary disturbances because of plying of vehicles in approach roads, site preparation involving cutting and filling of earth and soil, operation of construction machinery and equipment, and the involvement of a labour force.

During operational phase about 16-20 employees would be located at site. Resources use would comprise of about 9 KLD of water, to be sourced through a bore well at site. On a regular basis, small amounts of domestic waste and waste water would be generated from the site. From time to time, minor amounts of hazardous waste would also be generated from the site. From time to time, minor amounts of hazardous waste would also be generated and would be disposed off in conformance to regulatory requirements.

The baseline studies have profiled the environmental and social conditions of the Angara site and the study area of 2 kms around it. The studies were designed to collect information from secondary sources and to obtain primary information through site visits and consultations with local communities and other related stakeholders. Overall, the baseline is reflective of the environmental and social landscape of the area and the Ranchi District. Site specific environmental and social baseline is described in the table below:

Environmental Setting	
Terrain & Slope	The site is located on a higher part of a local plateau land with a topographic difference of approximately 11m between the highest and the lowest contour lines.
Soil	The soil at site is mainly lateritic in nature making it unfit for agricultural purposes. It's nature makes the soil prone to gully erosion.
HFL data	The highest and lowest contours of the site are 616 m and 605 m respectively.
Existing drainage pattern	There is no drainage channel within the site. Since the site is located on a slope and it is lateritic in nature gullies have been observed inside the site.
Environmental pollution in the vicinity	The proposed substation is located in a rural setting. There are no sources of air pollution in the vicinity. During the site reconnaissance construction of one new industry was observed just outside the 2 km periphery at south eastern direction of the proposed site.
Other environmental sensitivity	The site is flanked on both sides by forest land.
Social Setting	
Status of Land	The land belongs to the land Revenue Department Government of Jharkhand, It would be transferred to JUSNL free of cost by the Government of Jharkhand.
Habitations	There are only a few settlements in the vicinity. The Hesal village is the largest settlement in the vicinity is approx. 600 m from the site in its north. The block headquarter Angara is the major habitation is 3 kms away and Tatisilwai is 4 kilometer away. The other settlements in the north are Bewari, Masu and Baheya settlement in the south and Lupung village in east.
Religious & Culture related sensitivity (including sacred groves)	Satvari of Munda tribe is present just outside the northern boundary of the proposed site; barring which there are no features which are of religious or cultural significance either within the site or in its immediate vicinity.

In addition to the baseline surveys, a community consultation exercise was undertaken in the adjoining Hesal village. Residents of the village were consulted to validate secondary information on the socio economic status of the village, the perceptions of the local people with respect to the planned GSS project and to identify any existing dependency of the local community on the proposed site. The consultations revealed that there was no dependency on the plot of land which belonged to the revenue department. There is a satvari located just outside the northern boundary of the proposed project site. Munda community of Hesal colony raised their concerned about the disturbance of this Satvari during construction.

The potential and associated impacts of the proposed project were identified and evaluated using standard procedures. Source references including past project experience, professional judgment and knowledge of both the project activities as well as environmental and social setting of the site and surroundings were used in the assessment.

The change in land use from wasteland to infrastructure type may be considered to be having insignificant impact because the small extent of such change within the study area, which has the presence of considerable percentage of agricultural and forest land uses, would be minimal. Excavations, cutting and filling of soil and rocky outcrops present on site may lead to erosion and runoffs which may adversely impact adjoining land parcels and / or waterbodies. In addition, local drainage in and around the site may get impacted due to the change of the site topography, if proper site design is not undertaken considering these factors.

With the construction phase lasting about 1 year, construction related activities are expected to cause local level impacts (adjoining settlements of Hesal Village) on environmental quality due to re-entrainment of dust in air from earth works and construction dumps, air and noise emissions from vehicles and construction equipment, discharge of domestic waste water from labour camps and generation of construction and domestic wastes. In the construction phase, there are expected to be health and safety related issues due to involvement of labour in project construction activities. Influx of people (migrant workers, subcontractors and suppliers) may lead pressure on existing social infrastructure and their interactions with nearby rural communities or potentially lead to cultural conflicts, and result in additional vulnerability to women and population belonging to scheduled castes or tribes. At the same time, positive socioeconomic impacts are also expected with scope for business opportunities for local subcontractors, skill acquisition for local workforce and employment opportunities arising from recruitment of local construction labour and staff, improvement of roads and access.

Adverse impacts caused by the project during the operational phase are expected to be minimal, with no plans for any point source emissions or discharges from the GSS to any environmental media. The operation of the facility is expected to result in generation of small amount of wastes, some of which (like oily rags, waste oil, etc.) may be hazardous in nature and are not expected to cause any significant adverse impacts if adequate safeguards and mitigation measures are adopted, as delineated in the ESMP.

In order to ensure that the mitigation measures developed for the significant impacts of the proposed project are implemented and maintained throughout the project duration, an Environmental and Social Management Plan (ESMP) has been developed. The EMP outlines management strategies for managing all associated and potential impacts that could affect the environment and living conditions of people in the area. These mitigation measures and plans include:

- Arrange for appropriate compensation for loss of biodiversity caused because of land (Wasteland covering an area of 10 Acres).
- Plan for the sub-station site layout and for cutting and filling of earth in a manner that local drainages are not disturbed.
- There is a 400 kV transmission line cutting across the proposed project site in the eastern most boundaries; which should be given appropriate attention during the construction and operational phases of the site.

- Adopt appropriate engineering and associated mitigation measures and plans to minimise adverse impacts to local communities during construction activities.
- Adopt appropriate EHS safeguards and good practices to be adopted by construction contractors to ensure that occupational health and safety risks of labours are maintained at acceptable levels. The labour force should also undergo compulsory training on work related health and safety measures.
- Ensure local suppliers and contractors implement local employment and procurement policies to the benefit neighbouring communities of Hesal, Bewari, Masu, Baheya, Lupung and Tetisilwai village.

In order to ensure that the ESMP is implemented during construction phase, specific conditions of contract for Site Contractors to be engaged have been laid down which would be made part of the Bidding document. An ESMP monitoring plan would also be implemented to be enabling JSUNL to ensure that the planned mitigation measures are being implemented and adverse impacts are kept to the minimum possible level.

For the implementation of the JPSIP Project JUSNL has developed a Project Implementation Unit (JPSIP PIU) headed by the Chief Engineer (Transmission O&M). The JPSIP PIU would also be responsible for driving the implementation of the E&S safeguards in JPSIP. At the field level, the Chief Engineer cum GM of the Ranchi Zone of JUSNL would be responsible for implementing the technical aspects of the JPSIP with respect to the Angara GSS and would be responsible for overseeing the implementation of the ESMP and the E&S safeguards adopted by the contractor. In addition, it is recommended that the Contractor implementing the subprojects would induct Environment and Social personnel to supervise implementation of the E&S safeguards on the ground.

Through the process of consultation and disclosures, JPSIP would ensure that the project information is communicated to the stakeholders and the feedback from the community is integrated into the execution phases of the project. A Consultation Framework has been prepared to ensure involvement of stakeholders' at each stage of project planning and implementation. In addition, a three-tier Grievance Mechanism has been proposed for handling any grievances of community related to the project i.e. Tier 1 -Circle level, Tier 2 -Zone level, Tier 3- Grievance Redresses Cell located centrally at the JPSIP PIU in Ranchi.

1.1

BACKGROUND

The Government of Jharkhand with active support of the Government of India's has planned for implementing 24x7 Power for All (PfA) in Jharkhand. The program is aimed at achieving 24x7 reliable powers for all the households by FY 2019. The PfA roadmap includes interventions in generation, transmission, distribution, renewable energy and energy efficiency/ proposed to be implemented during FY16 to FY19. Government of Jharkhand through Jharkhand Urja Sancharan Nigam Limited (JUSNL) has planned to develop the transmission infrastructure in the State. This transmission infrastructure development is being funded from different sources e.g. domestic fund, Public Private Partnership (PPP) and multilateral funding. The Jharkhand Urja Sanchar Nigam Limited (the state run power transmission utility company) has approached the World Bank for assistance to fund a part of the transmission infrastructure under the Jharkhand Power System Improvement Project (JPSIP). The project would include creation of 25 new 132 kV substations and associated 132 KV transmission lines of around 2000 Kms.

JUSNL would like to develop the projects in a sustainable manner. Towards this objective, an Environmental and Social Management Framework (ESMF) has been developed to lay out a mechanism for integrating environmental and social concerns into the planning, designing and implementation phase of JPSIP. Based on the higher level guidance provided in the ESMF, each project component is undergoing a project specific Environmental and Social Impact Assessment (ESIA). Based on the outcome of the assessment, a project specific Environmental and Social Management Plan (ESMP) is laid down for all the sub-projects

1.2

PROJECT OVERVIEW

As part of the JPSIP, JUSNL has planned for development of 25 new substations and associated transmission lines. These substations and transmission lines have further been consolidated into schemes. For the purpose of implementation these schemes are divided into 3 Phases. The subprojects in each of the schemes are presented as *Annexure 1*.

In Phase I there are 9 schemes. Three (3) nos of schemes are located in Ranchi District while three (3) nos of scheme are located in Dumka District and three (3) nos in East Singhbhum district. Angara GSS is part of Scheme P of Phase I, which falls within Ranchi district.

This Environment and Social Impact Assessment Report deal only with the construction and operation of the new 132/33KV Substation at Angara Block

which is part of Scheme P of Phase I. The details of the other interlinked subprojects in the scheme are presented in *Table 1.1*.

Table 1.1 *Details of the substation and interlinked project (Scheme P)*

Sl. No	Details of Scheme P	Capacity (MVA)	Length (km)
1.	132/33 Kv GSS Angara (2x50 MVA)	100	
2.	132 kV D/C 3 Ph. Silli-Angara Trans. line		39.10
3.	132 kV D/C 3 Ph. Angara-Sikidiri Trans. line		36.66

Source: JUSNL

The Environmental and Social Assessment of the transmission lines are with the Angara Substation presented as **Scheme P Volume 2**:

- 132 kV D/C 3 Ph. Silli-Angara Trans. line
- 132 kV D/C 3 Ph. Angara-Sikidiri Trans. Line

1.3 *PURPOSE AND SCOPE OF THIS ESIA*

The ESIA process involves the identification of the potential environmental issues in the project and trying to address them through design interventions. The ESIA further carries out impact prediction and evaluation of residual environmental and social issues of a Project. It then goes on to outline the proposed mitigation measures for residual impacts and enhancement measures for positive impacts which the Project will implement.

The objectives of this document are to:

- Identify all potentially significant adverse and positive environmental and social issues of the Project. Enumerate the design modification which has been influenced by the ESIA process and define the final alignment of the Grid Substations (GSS);
- Gather baseline data to inform the assessment of impacts on the environment as a result of the Project;
- Suggest appropriate mitigation measures to effectively manage potential adverse impacts; and
- Developing an Environmental Management Plan (EMP) to implement suggested mitigation measures to minimise adverse impacts through effective management systems including formulation of monitoring and reporting requirements.

1.4 *STRUCTURE OF THE REPORT*

The report has been organized considering the following:

- Chapter 1 above contains a brief background of JPSIP. It also presents a broad context to the ESIA Study;
- Chapter 2 presents the regulations and policies applicable and actions which are required by JUSNL;
- Chapter 3 presents the description of the proposed substation and interaction with the bio-physical and socio-economic environment;

- Chapter 4 provided methodology adopted the ESIA study;
- Chapter 5 outlines the environmental and social setting of the proposed substation which forms the basis for assessment of potential impacts;
- Chapter 6 presents the likely impacts from the proposed substation over the lifecycle of the project along with its severity levels;
- Chapter 7 elaborates on the stakeholder identification process adopted and a brief of the public consultations under taken to capture the local residents / stakeholders perceptions; and
- Chapter 8 presents the mechanism of the implementation of the proposed mitigation measures complete with responsibility and resources requirements.
- Chapter 9 presents the Conclusions and Recommendations.

1.5 *LIMITATION*

ERM would like to highlight the following limitations with regard to this ESIA document:

- Project planning for proposed transmission line has been undertaken by Tata Consulting Engineer (Hereinafter referred to as “Design Consultant”) based on desktop studies and a Detailed Project Report has been developed based on the same. Detailed field survey of the project components like tower footing and the RoW is currently being undertaken by Design Consultant. The present draft of the ESIA therefore considers the project configuration as has been outlined in Design Consultant’s Report and impacts for the same has been accordingly assessed.

1.6 *USES OF THIS REPORT*

The Client acknowledges that report provided by ERM in relation to the provision of Services is delivered to the Client solely for the Client’s benefit. ERM, its officers, employees, contractors, and agents shall owe no duties, obligations or liabilities to any persons in connection with any use of or reliance on the Project information provided by JUSNL. We make no warranties, express or implied, including without limitation, warranties as to merchantability or fitness for a particular purpose.

ERM is not engaged in social and environmental, health & safety consulting and reporting for the purposes of advertising, sales promotion, or endorsement of any client's interests, including raising investment capital or recommending investment decisions, or other publicity purposes. The client acknowledges that the report prepared by ERM are for exclusive use of the client and agrees that ERM's reports or correspondence will not be used or reproduced in full or in part for such promotional purposes, and may not be used or relied upon in any prospectus or offering circular. The client also agrees that none of its advertising, sales promotion, or other publicity matter containing any information obtained from these assessments or reports, either in parts or entirety, will make reference to ERM's trade name. Nothing contained in this report shall be construed as a warranty or affirmation by ERM that the site and property described in the report are suitable collateral

for any loan or that acquisition of such property by any lender through foreclosure proceedings or otherwise will not expose the lender to potential environmental or social liability.

The ESMF identifies all the national and state level legislation rules and guidelines which would be applicable to JPSIP. It has also identified all the World Bank Policies and guidelines which are applicable in JPSIP. This section highlights only the relevant environmental and social policies and regulations, World Bank guidelines which are applicable for this project.

2.1 APPLICABLE LAWS AND STANDARDS

The applicable regulations in the context of the project are presented in below *Table 2.1*.

Table 2.1 Regulation Triggered for the Project

Sl. No.	Regulation	Applicability & Action Required	Responsibility
A.	Electricity Related Regulation		
1.	Electricity Act 2003 and Indian Telegraph Act 1885	<p>Under the provisions of Section 68(1):- Prior approval of the Govt. of Jharkhand (GoJ) is a mandatory requirement to undertake any new transmission project 11 kV upward in the State which authorizes JUSNL to plan and coordinate activities to commission a new Transmission project.</p> <p>Under Section 164:- GoJ, may by order in writing, authorize JUSNL for the placing of electric line for the transmission of electricity confer upon licensee (i.e. JUSNL) in the business of supplying electricity under this act subject to such conditions and restrictions, if any, as GoJ may think fit to impose and to the provisions of the Indian Telegraph Act, 1885, any of the power which the Telegraph authority possesses.</p> <p>The Electricity Act and Telegraph Act provide guidance on the compensation payable for damages to crops/ trees and structures for setting up of transmission line. As per the provision of the above mentioned Acts, JPSIP would require to pay compensation for any damage or loss due to its projects.</p>	JUSNL, JPSIP
2.	Technical Standards for Construction of Electrical Plants and Electric Lines Regulations, 2010; Measures relating to Safety and Electric Supply Regulations, 2010	<p>Both the Regulations are framed by Central Electricity Authority (CEA) of India under Indian Electricity Act, 2003. These regulations provide technical standard for construction of electrical lines and safety requirements for construction/ installation/ protection/ operation/ maintenance</p>	JPSIP, Contractor

Sl. No.	Regulation	Applicability & Action Required	Responsibility
		nance of electric lines and apparatus. JPSIP and its contractors would comply with the requirements of these regulations.	
B. Environment/Social Legislation			
1.	Environment Protection Rules, 1986 and applicable standards	The standards for discharge/emission from different type of pollution source (e.g., DG sets) and industries have been laid down by CPCB under EP Rule, 1986. JPSIP would ensure that all these standards are complied during the planning, construction and operation of the project.	JPSIP, Contractor
2.	Ancient Monuments & Archaeological Sites and Remains Act, 1958; Indian Treasure Trove Act, 1878; Jharkhand Ancient Monuments and Archaeological Sites, Remains and Art Treasures Act, 2016.	Proposed substation site is not located near or inside archaeological site. Thus National and State level Acts on Ancient Monuments and Archaeological Sites will not be triggered for this project. However, treasure, archaeological artefacts can be found during excavation work; for which procedure laid down in Indian Treasure Trove Act, 1878 would be followed.	JPSIP, Contractor
3.	Hazardous and Other Wastes (Management and Transboundary Movement) Rules, 2016	Generation of waste oil and used transformer oil at site would attract the provisions of Hazardous Waste and other waste Rules, 2016. The hazardous wastes have to be disposed through CPCB/SPCB approved recyclers only. JPSIP would obtain authorization for hazardous waste under this Rule. JPSIP would also maintain record of hazardous waste and submit the desired return (Form 4) in prescribed form to JSPCB.	JPSIP
4.	E-Waste (Management) Rules, 2016	JPSIP, being the bulk consumer of electrical and electronic equipment will ensure that e-waste generated is channelized through collection center or dealer of authorized producer or dismantler or recycler or through the designated take back service provider of the producer to authorized dismantler or recycler.	JPSIP
5.	Battery (Management & Handling) Rules 2001	It is the responsibility of the bulk consumer ⁽¹⁾ (JPSIP) to ensure that the used batteries are deposited with the dealer, manufacturer, or registered recycler for handling and disposal. A half-yearly return (Form-1) is to be filed as per the rule to JSPCB.	JPSIP
6.	Ozone Depleting Substances (Regulation and Control) Rules, 2000	JPSIP shall follow the provisions of the notification and shall phase out all equipment, which uses these substances. In case of substation no equipment would	JPSIP, Design Consultant

(1) 'Bulk Consumer' means a consumer such as the Departments of Central Government like Railways, Defense, Telecom, Posts and Telegraph, the Department of State Government, the Undertakings, Boards and other agencies or companies who purchase hundred or more than hundred batteries per annum.

Sl. No.	Regulation	Applicability & Action Required	Responsibility
7.	Central Ground Water Authority (CGWA) Public Notice dated 4 th January 2017	be procured which contain CFC's. Permission need to be obtained from State Level Ground Water Resources Development Authority and Central Ground Water Authority for installation of bore well and abstraction of ground water resource.	JPSIP
8.	Regulation of Polychlorinated Biphenyls Order, 2016	The use of polychlorinated biphenyls or any equipment containing PCB would be prohibited entirely from 31st December, 2025. The technical specification would clearly state that the transformer oil should be free of PCBs or else the DPR should provide a road map for ensuring the phasing out of all PCB's by 2025.	JPSIP and Design Consultant
C. Labour related Legislation			
1.	The Child Labour (Prohibition and Regulation) Act, 1986	This Act prohibits engagement of children in certain employments and regulates the conditions of work of children in other certain employments. JPSIP and its contractors would comply with the requirements of these regulations.	JPSIP, Contractor
2.	Contract Labour (Regulation & Abolition) Act 1970	This Act regulates the employment of contract labours in certain establishments and prohibits for its abolition in certain circumstances. JPSIP and its contractors would comply with the requirements of these regulations.	
3.	Minimum Wage Act, 1948	Under this Act, Jharkhand State government has notified minimum wage rate for the workers. JPSIP's contractors would provide minimum wage to its workers as per the minimum wage rate provided in the said notification.	
4.	Bonded Labour System (Abolition) Act, 1976	This Act abolished bonded labour system to prevent the economic and physical exploitation of the weaker sections of the people. JPSIP and its contractors would comply with the requirements of these regulations.	
5.	Grievance Redressal Machinery under Industrial Disputes Amendment Act, 2010	This Act provides mechanism for setting up of grievance redressal committee in industrial establishment. JPSIP and its contractors would comply with the requirements of these regulations.	
6.	Employees' Provident Fund and Miscellaneous Provisions Act, 1952	This Act provides for the institution of provident funds, pension fund and deposit-linked insurance fund for employees in factories and other establishments. JPSIP and its contractors would comply with the requirements of these regulations.	
7.	The Payment of Wages Act, 1936, amended in 2005; Workmen's Compensation Act, 1923	This Act provides for timely disbursement of wages payable to employed persons covered by the Act. JPSIP and its contractors would comply with the	

Sl. No.	Regulation	Applicability & Action Required	Responsibility
8.	Maternity Benefit Act, 1961;	requirements of these regulations. This Act regulate the employment of women in certain establishments for certain periods before and after child-birth and to provide for maternity benefit and certain other benefits. JPSIP and its contractors would comply with the requirements of these regulations.	
9.	Employees State Insurance Act, 1948	This Act provides certain benefits to employees in case of sickness, maternity and 'employment injury'. This Act is applicable to employees earning Rs 15,000 or less per month. JPSIP and its contractors would comply with the requirements of these regulations.	
10.	Inter-state Migrant Workmen Act, 1979	This Act regulates the employment of inter-State migrant workmen and provides for their conditions of service. JPSIP and its contractors would comply with the requirements of these regulations.	
11.	Intimation of Accidents (Forms and Time of Service of Notice) Rules, 2004	This Rule comes in force for occurrence of accident in connection with the generation, transmission, supply or use of electricity and electric line. JPSIP would incorporate requirements of these regulations in contract document of procurement.	

2.2

WORLD BANK SAFEGUARD POLICY

The implementation of the World Bank Operational Policies seek to avoid, minimize or mitigate the adverse environmental and social impacts, including protecting the rights of those likely to be affected or marginalized by the proposed project. Based on the information gathered during the study, following Policies are triggered and would require adequate measures to address the safeguard concerns.

Table 2.2 *World Bank Policies Triggered for the Project*

Sl. No.	World Bank Policies/Guidelines	Applicability	Responsibility
1.	OP 4.01 Environmental Assessment	The Bank requires environmental assessment (EA) of projects under Bank financing to help ensure that they are environmentally sound and sustainable. EA takes into account the natural environment (air, water, and land); human health and safety; social aspects (involuntary resettlement, indigenous peoples, and physical cultural resources); and transboundary and global environmental aspects. As per requirement of the OP 4.01, environmental assessment is being carried out for this project.	Environmental and Social Consultant of JPSIP
2.	BP 4.11 Physical Cultural Resources	This policy requires Bank financing projects to assess impacts on physical cultural resources at the earliest possible stage of the project planning cycle.	Environmental and Social Consultant of

Sl. No.	World Bank Policies/Guidelines	Applicability	Responsibility
		Environmental assessment involves the preparation of a physical cultural resources management plan that includes (a) measures to avoid or mitigate any adverse impacts on physical cultural resources; (b) provisions for managing chance finds; (c) any necessary measures for strengthening institutional capacity for the management of physical cultural resources; and (d) a monitoring system to track the progress of these activities. Though presently there are no physical cultural resource found to be affected by the project, possibility of "chance finds" cannot be ruled out. If something is found at later stage of the project (construction phase), procedures laid down in "Indian Treasure Trove Act, 1878". The ESIA Study for the Angara substation would be carried out to have a better understanding of physical and cultural resources present in the site (if any).	JPSIP
3.	OP 4.10 Indigenous Peoples	This policy contributes to the Bank's mission of poverty reduction and sustainable development by ensuring that the development process fully respects the dignity, human rights, economies, and cultures of Indigenous Peoples. For projects which are likely to have impact on the tribal community a Tribal Development Plan would be developed and implemented.	Environmental and Social Consultant of JPSIP/JPSIP
4.	IFC/WB General EHS Guidelines	Recommendations of these guidelines would be incorporated in ESMP and Bidding document for this project.	Environmental and Social Consultant and
5.	IFC/WB Guidelines for Power Transmission and Distribution		Technical Consultant of JPSIP

3 PROJECT DESCRIPTION

3.1 REGIONAL SETTING

The proposed substation at Angara is located at Hesal Village of Angara Block in Ranchi District. The Hesal village is part of the Hesal Gram Panchayat.

3.2 PROJECT LOCATION

3.2.1 Location

The proposed location for the substation is planned to be located on Plot No 4201 in the Hesal Mouza, Thana Number 19 of Ranchi District.

The entire plot of land i.e. Plot No 4201 is approximately 21 acres of which 10.0 acres has been already allotted¹ to JUSNL by the District Collector Ranchi for development of the substation. The salient features of the project location are presented in *Table 3.1*.

Table 3.1 *Salient Features of the Project Location*

Sl. No	Item	Description
1.	Plot No/s	4201
2.	Area	10 acre/ 4.04 Hectares
3.	Allotment Letter No	4611(11) dated 28/11/2016 of Revenue Branch, District Collector Office Ranchi
4.	Type of Land	Gair Majua (GM) , Parti Kadim
5.	Ownership	Government of Jharkhand
6.	Toposheet Number	73E/07
5.	Coordinate	23°23'13.92"N, 85°28'19.08"E

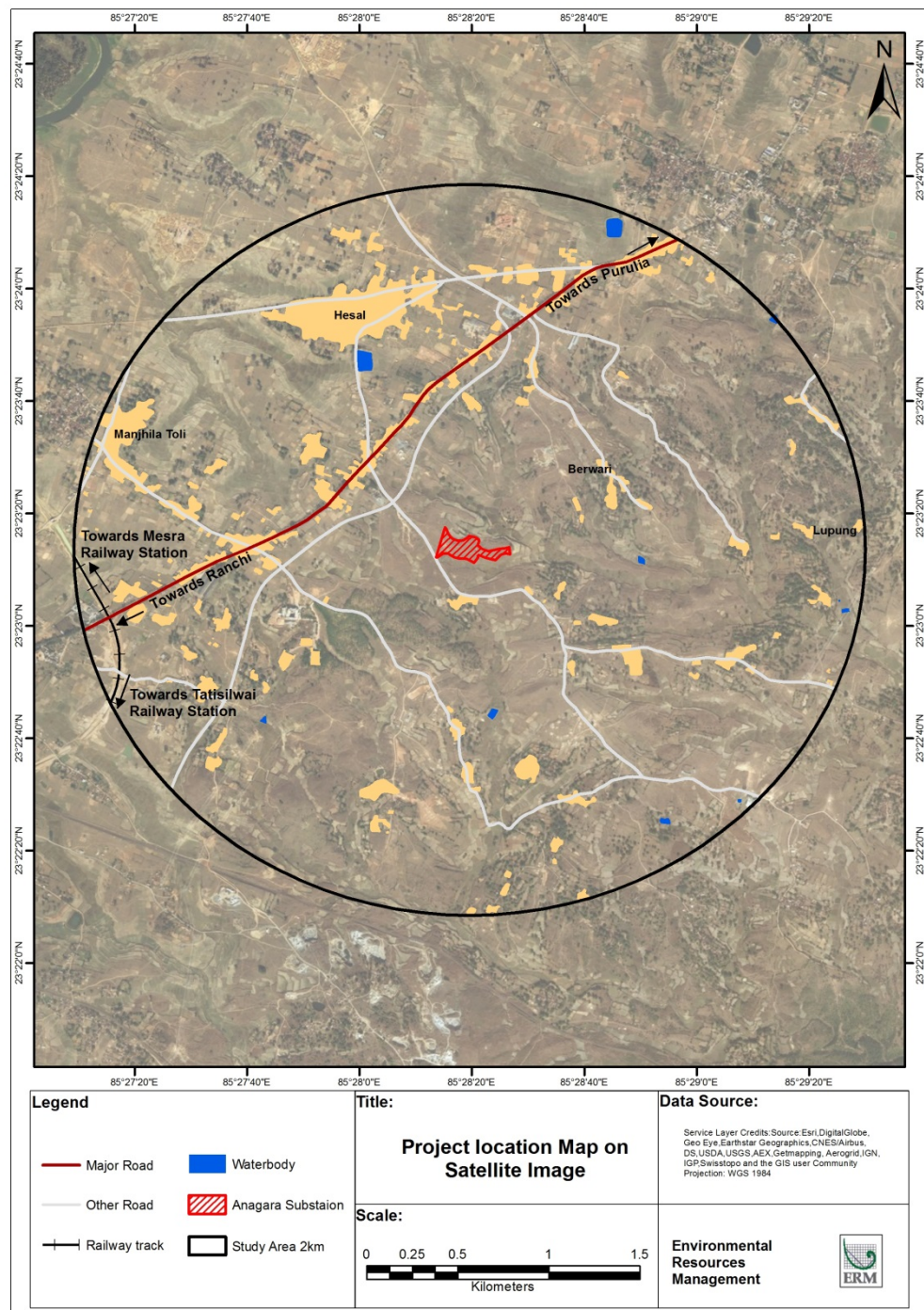
3.2.2 Accessibility

The site is connected to the Ranchi-Purulia Road (State Highway-1) by the Hesal –Baheya village road. This road is a 2 lane undivided carriage and is thus sufficient to handle the movement of vehicle during the construction and operational phases of the project. Since the site is directly accessible from the Hesal –Baheya village road, there is no need for construction of access road. However the conditions of the village road is very poor and there might be a requirement for repair of the road before the construction.

¹ As per the revenue records the land is classified as *Gair Majua Jungle Jhari* and belongs to the Forest Department of the Government of Jharkhand. As per the Revenue Department's pledge No 1817 dated 30.04.2017 all deemed forest would be transferred to the user agency/Department only after the Forest Clearance Process under the Forest Conservation Act 1980 has been completed..

The location, boundary and access to the site, as plotted on high resolution satellite imagery, is shown in *Figure 3.1* below.

Figure 3.1 *Location, Site Boundary and Access shown on Satellite Imagery (along with adjacent settlements)*



3.3 SITE SETTING

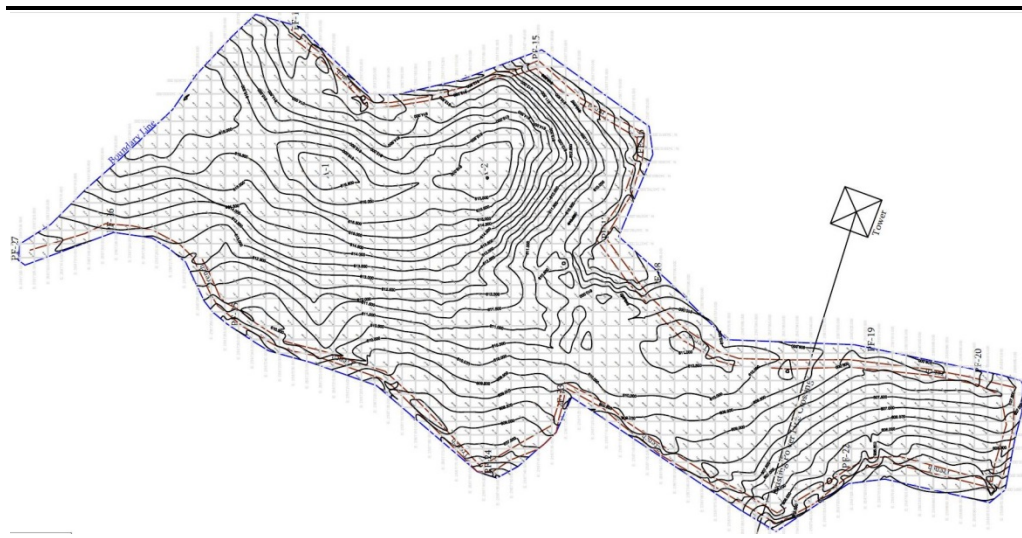
3.3.1 Project Site

This proposed site location is categorized as Parti Kadim (Current Fallow) category in the revenue record of Ranchi district. As per the consultation with

local people, this land is not suitable for agricultural activity due to less fertility of the soil but some opportunistic agriculture activity was observed during site visit because of good rain fall in the region.

The substation site is located on the flat fallow land with some depression in the middle. The topographical survey undertaken at site indicates that the highest contour (616 m) runs along the Hesal Baheya interconnecting village road (located to the western corner of the site). The lowest contour (605m) is located on the eastern boundary of the site. The contour of the site is presented in *Figure 3.2*.

Figure 3.2 *Contours of the Proposed Angara Substation Site*

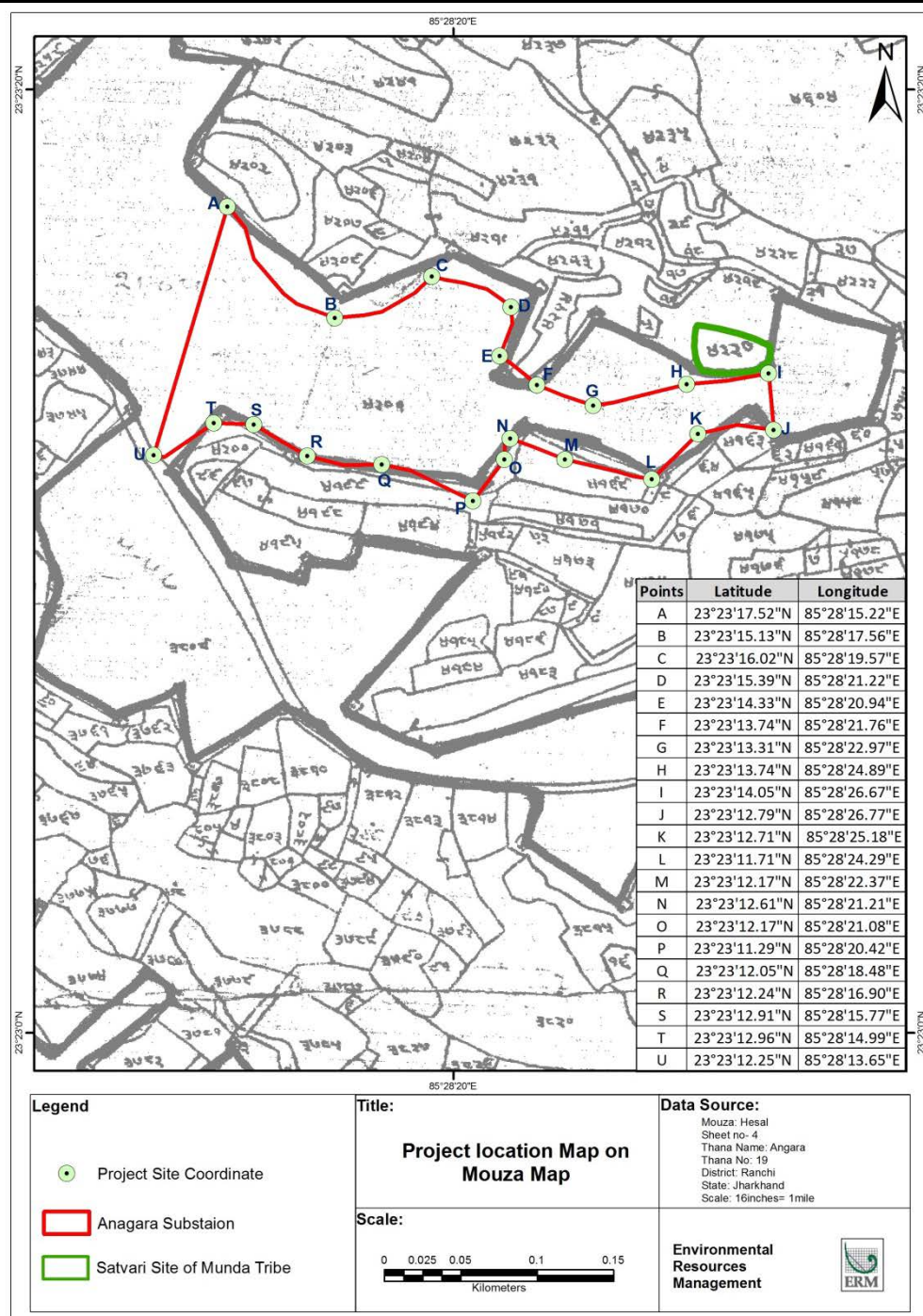


One satvari ⁽¹⁾ of Munda tribe was observed just beside the norther corner boundary of the proposed site location.

Superimposition of the boundary of the substation site on the Mouza sheet is presented in *Figure 3.3*. It indicates that the Plot No 4201 is a huge plot an only a part of the plot has been allotted to JUSNL. There is only one mature mohua trees (*Madhuca latifolia*) is present at the south west corner of the site boundary just beside the village road. As the site is located on flat land no defined drainage channel was observed within the site.

(1) Mundas in Eastern India still follow the tradition of erecting memorials for the dead. The funeral monument of the tribes is miniature memorial stones. Munda people of erect memorials stone only after performing an elaborate secondary burial.

Figure 3.3 Site boundary superimposed on the Mouza map of Hesal village



3.3.2 Site Vicinity

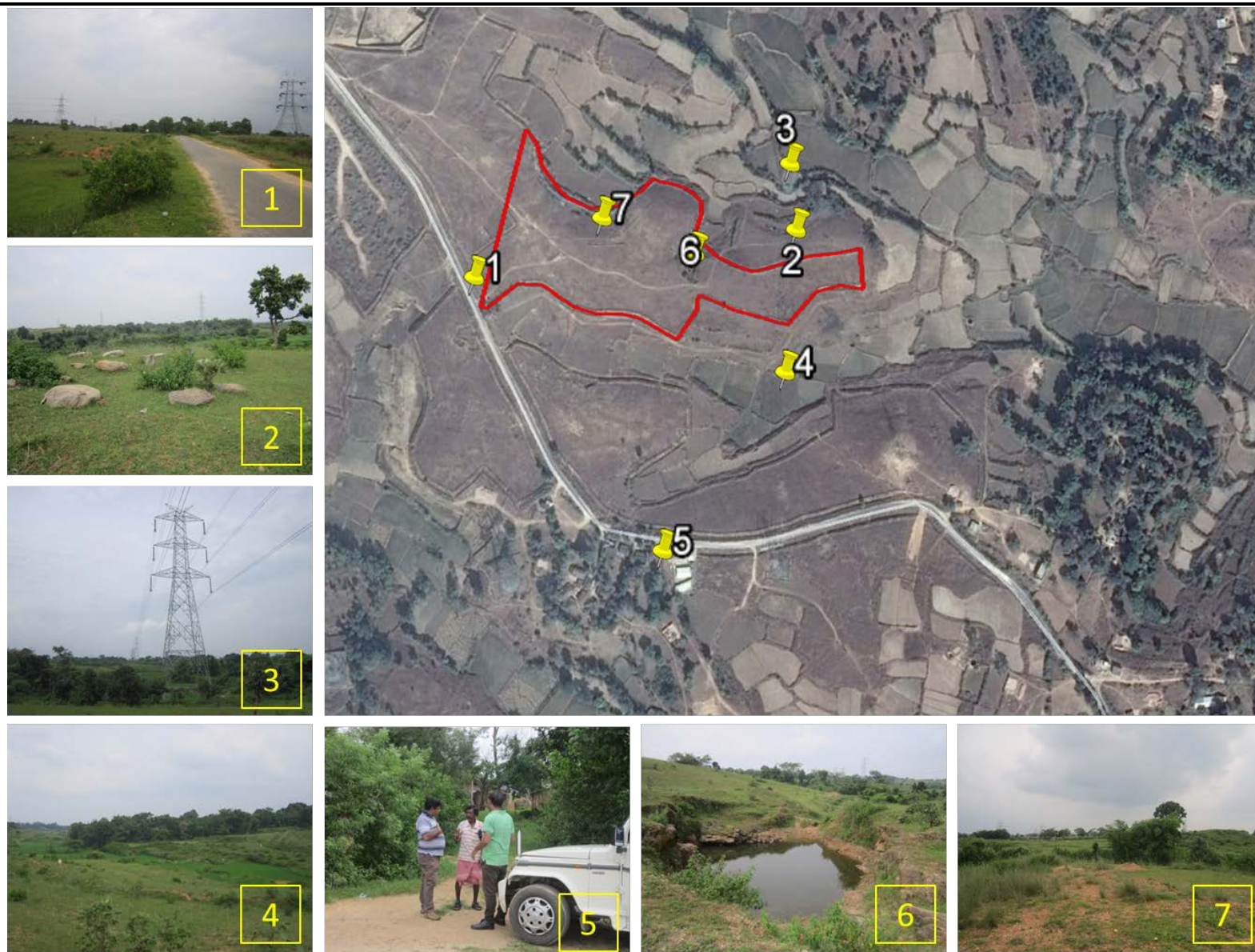
The physical feature, built structures (habitations, roads) and other environmental sensitivities around the site is presented below.

Direction	Features
North	There are some fallow and agriculture land and a natural drainage channel and the satvari of Munda tribe is also present adjacent to the boundary of the site at the northern side. Beyond the immediate vicinity Hesal, Berwari village is located in the northern site with the two kilometer periphery of the proposed project. Ranchi Purulia road is also passes approximately 500m from the site boundary. Major part

Direction	Features
	of the reaming land is scrub land and small portion is agricultural land.
East	There is a 400 kV transmission line is cutting across the proposed project site in the eastern most boundary. Beyond the immediate vicinity Lupung village and its connecting road with Angara is located 1.82 km away from the eastern boundary. Other than that whole area up to 2 kilometer is characterized rain-fed agricultural and fallow land.
South	Nicha toli of Hesal village and Baheya village located southern site of the proposed project site at a distance of 200 meter and 1.5 kilometer respectively. Other than that whole area is interspersed with with agricultural land, scrub and fellow land.
West	Inter connecting Road between Hesal and Baheya is located just beside the Western boundary of the proposed project site and it also served as main access road of the proposed site. . Beyond the immediate vicinity construction of Ranchi Ring Road and new railway line up to Patratu is also going at a distance of 500 meter and 1.69 kilometer respectively from western boundary of the project site. Other than that Manjhila toli and Masu villages is also located at distance of 900 meter and 1.7 kilometer from the proposed site.

Photographs of the features surrounding the substation site are presented in **Figure 3.4**.

Figure 3.4 Photographs of Site Surrounding

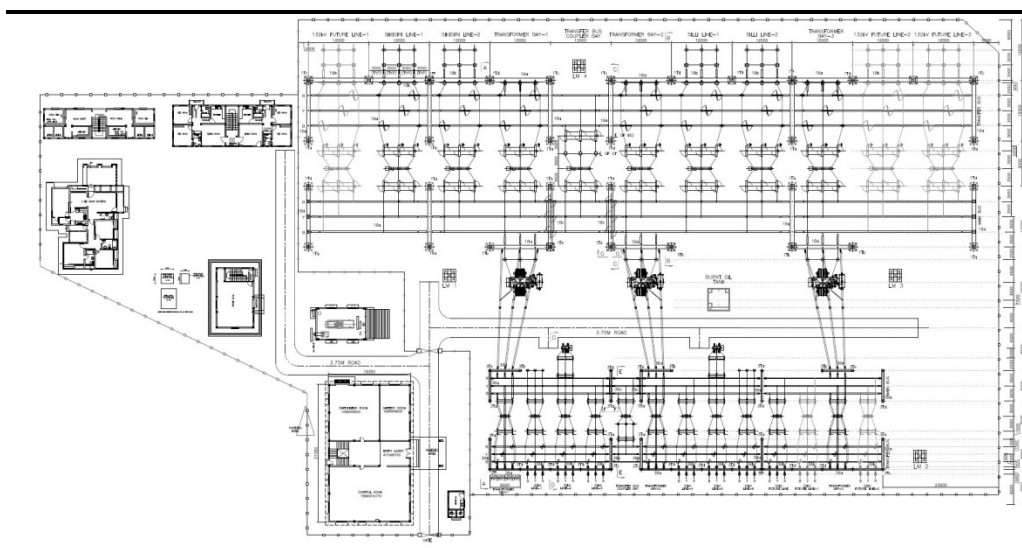


The key project components which have been planned in the project are presented in the *Table 3.2* and the typical substation layout is presented in *Figure 3.4*.

Table 3.2 *Project Components in the 132/33 KV Substation at Angara*

Sl.No	Component	Description
1.	Transformer	3 nos 50 MVA Oil Cooled Transformer (1 nos of transformer bays would be for future expansion)
2a.	Bays (incoming)	10 nos of 132 KV bays (3 nos for future Expansion)
2b.	Bays (outgoing)	13 Nos of 33 KV bays (5 nos for future Expansion)
3	Transformer Oil	Would be as per the Regulation of Polychlorinated Biphenyls Order, 2016
A. Associated Infrastructure		
4	Control Room	One number with control panel
5	Residential Quarters	8 nos of 1 bedroom flats Type III 8 nos of 2 bedroom flat Type II 1 four room Type I Accommodation
6	Pump House	1 nos of submersible pump

Figure 3.5 *Typical Layout of a 132/33 KV substation Planned in the JPSIP*



The estimated cost for construction of the 132/33 KV Angara substation would be around INR 115.73 crores. This includes the cost of civil works, cost of procurement of electrical equipment and associated materials, installation and commissioning. It is estimated the construction would be completed within a period of 2 years. Site preparation, construction and civil works of the substation are expected to be completed in about 12 months.

3.6

RESOURCE

The resources required during the construction and operations phases of the project are presented in the *Table 3.3* below.

Table 3.3 *Resource Requirement in Construction and Operation of 132/33 KV Grid Substation at Angara*

Sl. No	Description	Resource Requirement
1.	Land (Total)	10 acres
2a.	Manpower (Construction Phase)	The peak manpower requirement is expected to 50.
2b.	Manpower (Operation Phase)	The Peak manpower is expected to be 16-20
31.	Water (Construction Phase)	10-13 KLD (peak water)
3b.	Water (Operation Phase)	8.4 KLD (for domestic purpose)
4.	Construction Material	Steel, Cement, Aggregate and Sand

3.7

DISCHARGES AND WASTES

During the lifecycle of the substation i.e. construction and the operation the discharges and waste which would be generated is presented in *Table 3.4*.

Table 3.4 *Emission and Discharges from 132/33 KV Grid Substation*

Sl. No	Description	Quantity
1a.	Waste Water (Construction)	Peak generation of 2.5 KLD
1b.	Waste Water (Operation)	6.7 KLD
2a.	Solid Waste (Construction)	The Municipal solid waste would be around 7.5 -12 kg per day. In addition construction waste would be generated.
2b.	Solid Waste (Operation)	The municipal solid waste generated during the operational stage would be around 21 kg/day
3.	Used Transformer Oil	The waste transformer oil would be produced at an interval of 15 years.
4.	e-Waste	The e-waste generated from the panels at the end of the life

A project level Environmental and Social Impact Assessment (ESIA) is method of systematic identification and evaluation of the potential impacts (effects) of a proposed substation relative to the physical, biological and socioeconomic components of the environment. The ESIA study can be considered as an important project management tool that can assist in collecting and analyzing information on the environmental effects of a project and ultimately identify actions which can ensure that the projects benefits outweigh the impact on the bio-physical and social environment. The activities which have been undertaken in each of these steps/stages are presented in the subsection below.

4.1 SCREENING & SCOPING

An initial reconnaissance visit was conducted to the site to understand the extent of the site and prevailing environment and social setting in its immediate vicinity and use it as a basis of screening and scoping exercise for the ESIA.

An effort was also made to understand the decision process that led to the selection of the site and how environmental and social issues were factored into the selection process. Discussions with the respective Zone and Division of JUSNL revealed that a number of available plots of land belonging to the government were proposed by the Land Revenue Department and the decision towards confirmation of the site was made based on the following technical, environmental and social considerations:

- A total of more than 8 acres of land was available;
- The plot had good road access;
- It did not comprise of prime agricultural land and did not have any residential premises within it;
- There were no major settlements in the immediate vicinity.

As per the ESMF, an initial environmental and social examination (IESE) was conducted to determine whether or not there would be key environmental and social impacts from the construction and operation of Angara GSS at the allocated site. The results of the IESE has been recorded in an Environmental and Social Impact Identification Matrix presented in the IA Section (Chapter 6) and was used as a tool for scoping the ESIA to potential environmental and social issues of concern. The IESE also helped in determining the requirement for other specialized studies e.g. Resettlement Plan, Biodiversity Action Plan and Tribal People Plan.

Establishing baseline helps in understanding the prevailing environmental and socio economic status of the study area. It provides the background environmental and social conditions for prediction of the future environmental and social characteristics of the area due to the operation of the proposed project during its life cycle. It also helps in environmental and social management planning and strategy to minimise any potential impact due to the Project activities on surrounding environment.

Considering the project activities described in **Chapter 3** it is anticipated that scale and magnitude of project induced impacts are likely to be perceived within 2 km radius of the GSS site location and has been considered as study area for the ESIA. Site surveys were conducted in the study area to understand the environmental setting of the site and the study area, understanding of the drainage patterns, presence of physiographic features e.g. hillocks, rocky outcrops, location of the habitations with respect to the site, condition of the approach road to the site etc. Ecological surveys and community consultations were also conducted to collect the information related to the local community and biological environmental conditions of the study area. Secondary baseline data collection involved identifying and collecting available published material and documents on relevant environmental and social aspects (like soil quality, hydrogeology, hydrology, drainage pattern, ecology, meteorology and socio-economic conditions) from veritable sources including Govt. Departments, Research papers, etc.

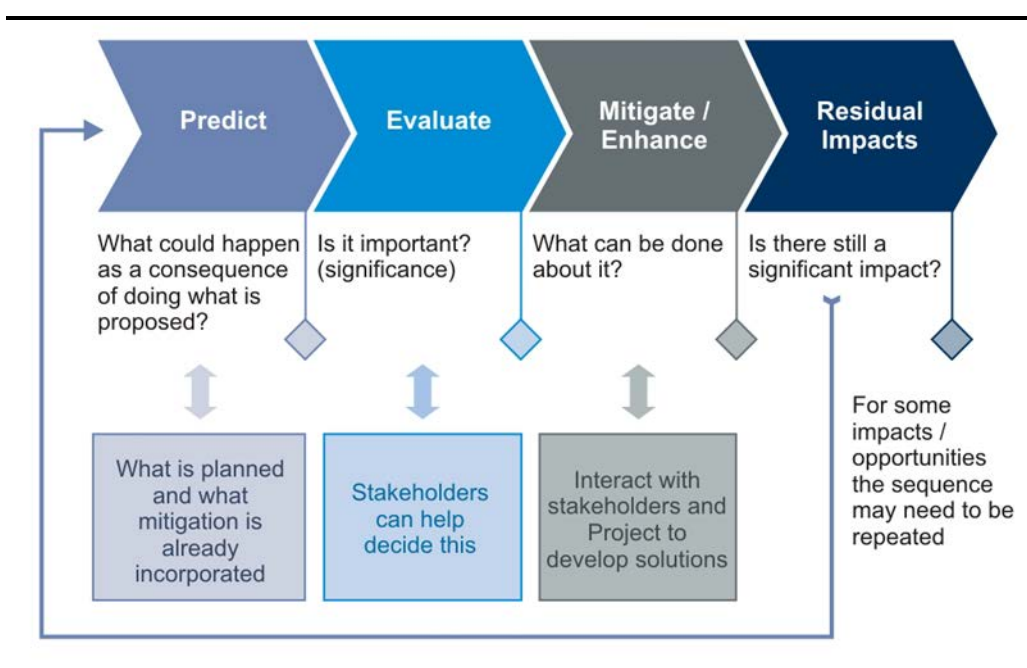
The key aim of the impact assessment process was to characterize and evaluate potential environmental and social impacts arising out of the project and prioritize them so that they can be effectively addressed through Environment & Social Management Plans (ESMPs). The potential impacts have been identified through a systematic process wherein the activities (both planned and unplanned) associated with the project, across the construction and operational phases have been considered with respect to their potential to interact with environmental and social resources or receptors. Thereafter, sequential impact assessment steps involving impact prediction, evaluation, mitigation and enhancement and evaluation of residual impacts have been followed in a phased manner.

Prediction of impacts was undertaken as an objective exercise to determine what could potentially happen to the environmental and social receptors as a consequence of the project and its associated activities and took into account baseline conditions at site, stakeholder's opinion and expert judgement. The evaluation of impacts was done using a semi-quantitative, based on the delineation of a set of criteria as follows:

- *Scale*: Degree of damage that may be caused to the environmental and social components concerned.
- *Extent*: The extent refers to spatial or geographical extent of impact due to proposed project and related activities.
- *Duration*: The temporal scale of the impact in terms of how long it is expected to last.
- *Magnitude*: Degree of change caused by a project activity is a function of Scale, Extent and Duration, as applicable.
- *Vulnerability of Receptor*: Represents the sensitivity of the receptor based on the relationship between the project and present baseline environment (the receptor).

Once magnitude of impact and sensitivity/ vulnerability/ importance of resource/ receptor have been characterized, the significance was assigned for each impact using an impact score for each criteria, following a systematic rating method, leading to the qualification of significance of impact as Negligible, Minor, Moderate and Major. The overall impact assessment methodology is presented in *Figure 4.1* below.

Figure 4.1 *Impact Assessment Process*



4.4 ENVIRONMENTAL AND SOCIAL MANAGEMENT PLAN PREPARATION

The Environmental & Social Management Plan along with a Monitoring Plan has been prepared as a site specific document for the construction and operation of the GSS. The ESMP would act as a guidance document for JPSIP to ensure that they can implement the project in an environmentally sound manner where project planners and design agencies, contractors, relevant government departments and stakeholders of concern understand the potential impacts arising out of the proposed project and take appropriate actions to properly manage them.

5.1 INTRODUCTION

This section establishes the baseline environmental and socio economic status of the project site and surrounding area to provide a context within which the impacts of the Project are to be assessed.

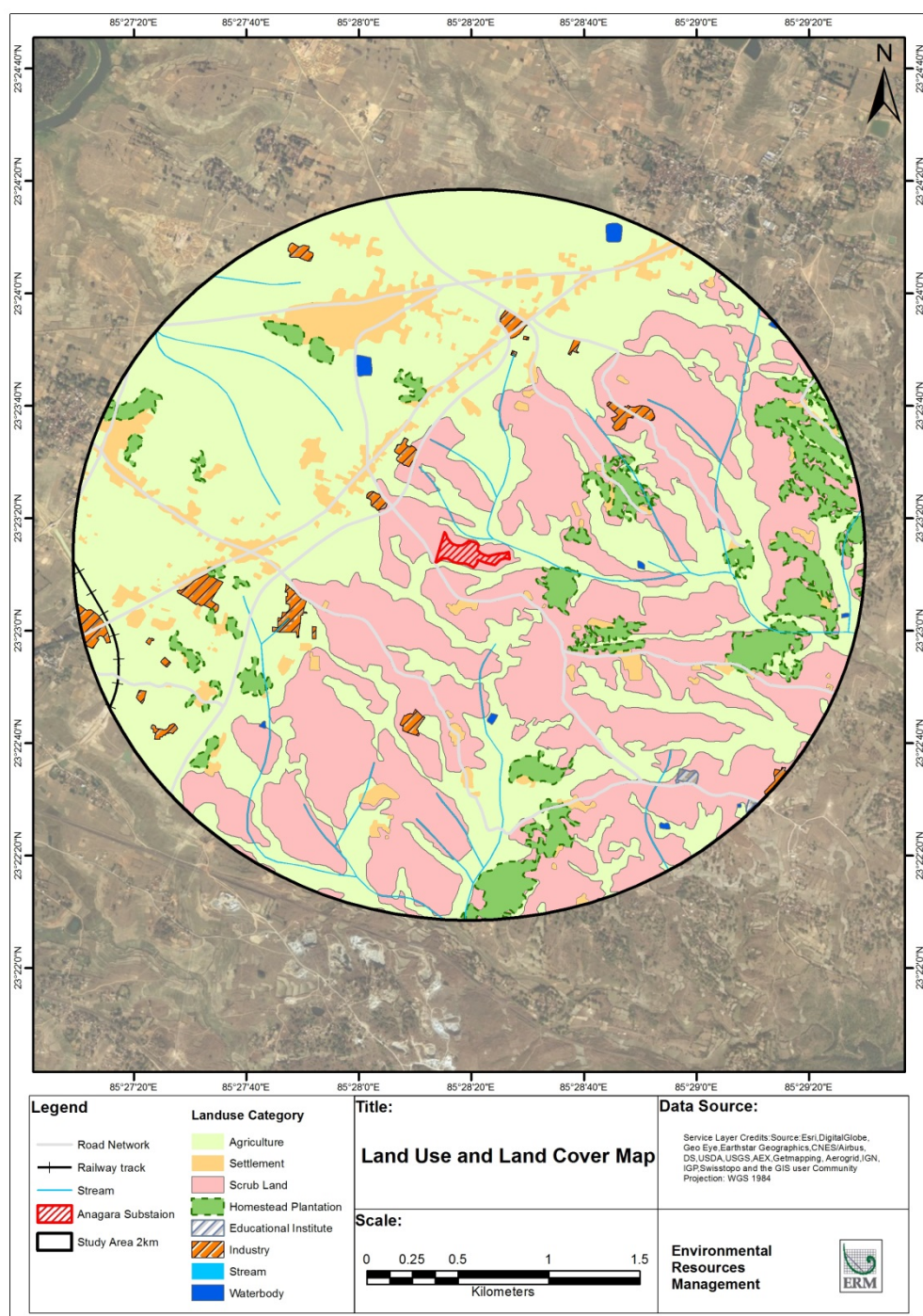
5.2 LAND USE/LAND COVER

Total land under the proposed GSS site is 10 acre and it is under land revenue department of Ranchi district. No agriculture land is involved within the proposed site. Agricultural land is the most predominant land use with in the study area followed by scrub land. Existing land cover pattern in and around the study area is presented in *Table 5.1* and the land use map of the study area is shown in *Figure 5.1*.

Table 5.1 Existing Land Use/Land Cover Pattern of the Study Area

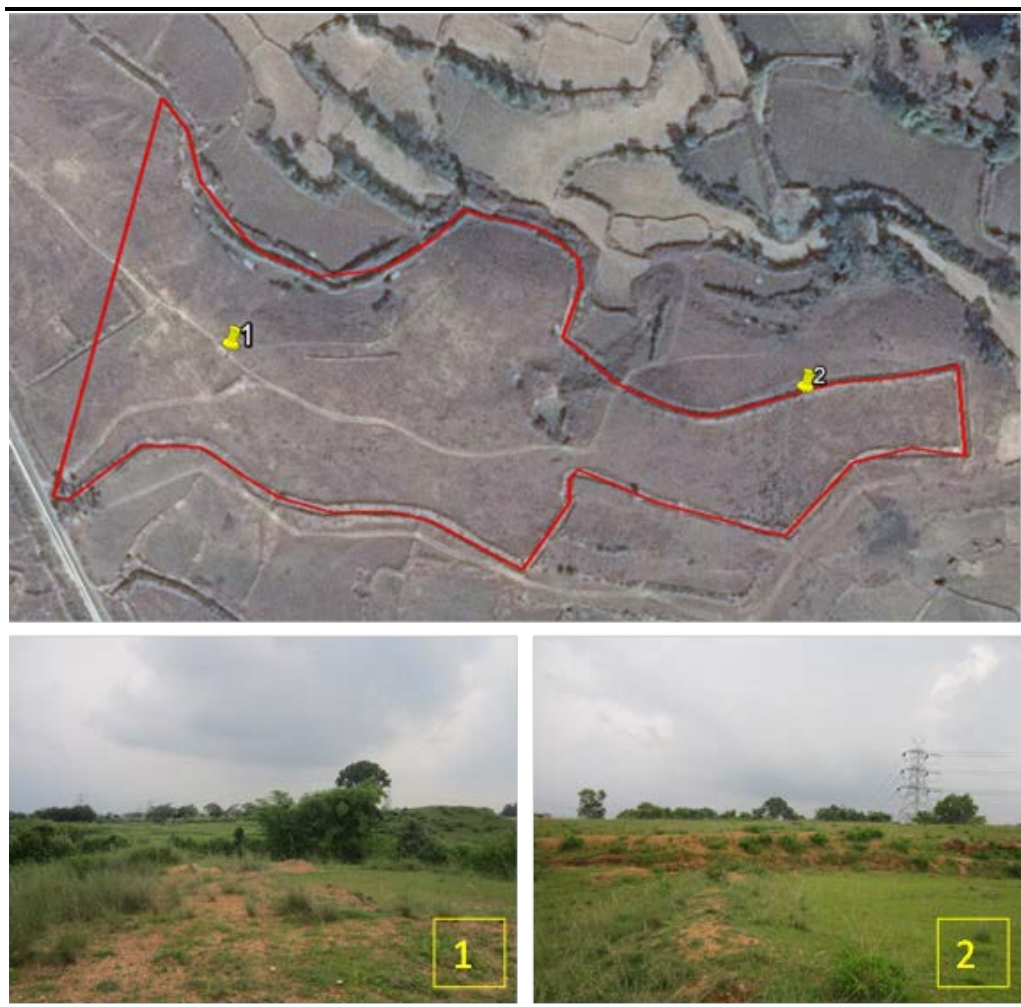
Name	Area in Sq. Km.	Percentage
Agriculture	6.40	50.95%
Educational Institute	0.01	0.07%
Homestead Plantation	0.74	5.87%
Industry	0.15	1.18%
Railway Track	0.01	0.05%
Road Network	0.25	2.00%
Scrub Land	4.20	33.44%
Settlement	0.68	5.39%
Stream	0.11	0.84%
Waterbody	0.02	0.19%
Total	12.56	100.00%

Figure 5.1 Land Use/ Land Cover Map of the Study Area



Land for proposed GSS is located in a flat land with gentle slop and the existing soils type of this land and adjoining area are lateritic red in colour, highly permeable, course textured with low organic matter content and is less fertile. Photographs of soil exposed at the project site are provided in *Figure 5.2*.

Figure 5.2 *Soil at Project Site*



The Ranchi district is characterized by humid-sub tropical climate. Summer is usually from the month of March to May, Monsoon is from June to September and winter stretches from December to February. January is the coldest month with the mean daily maximum temperature at 22°C and the mean minimum temperature at 5.6°C. From February, both day and night temperatures increase rapidly till May, which is the hottest month of the year with mean maximum temperature of 46.7°C.

Majority of the rainfall in the area is received through the South-West monsoon between June to September. The total rainfall on the average is about 1163.4 mm, of which 85% precipitation is during rainy season only.

5.5

NATURAL HAZARD

There has been no reported occurrence of any major natural disaster in the recent history of Ranchi district. According to District Disaster Management Plan 2016, parts of the Ranchi district are vulnerable to flooding, hail storm, earthquake (Zone -II) and lightening.

Discussion with locals reveal that historically there has been no incidents of flooding at the GSS site and surrounding areas as it occupies higher ground as compared to the HFL of the Subernarekha river, the main drainage of the watershed. Due to undulating terrain and dendritic drainage pattern with a slope towards Getalsud Dam in the south-west and Sikni Dam in the north-east of the proposed site, rain water quickly flows out into the main drainage channels and it was reported by villagers that no problem related to temporary water logging has been encountered in the immediate vicinity of the site.

5.6

AIR & NOISE ENVIRONMENT

There is no major air polluting industry is present in 2 km of the proposed GSS site. Only few (11) small scale industry is present within the study area but all of them are located beyond 500 meter periphery of the proposed site and chance of emission of air polluting substance from this industry is very limited. The source of generation of particulate matter is during transportation of vehicles through adjoining Ranchi-Purulia Road and from burning of fossil fuels for domestic purpose. Considering this context, the ambient air quality is expected to be well within the National Air Quality Standards for all parameters.

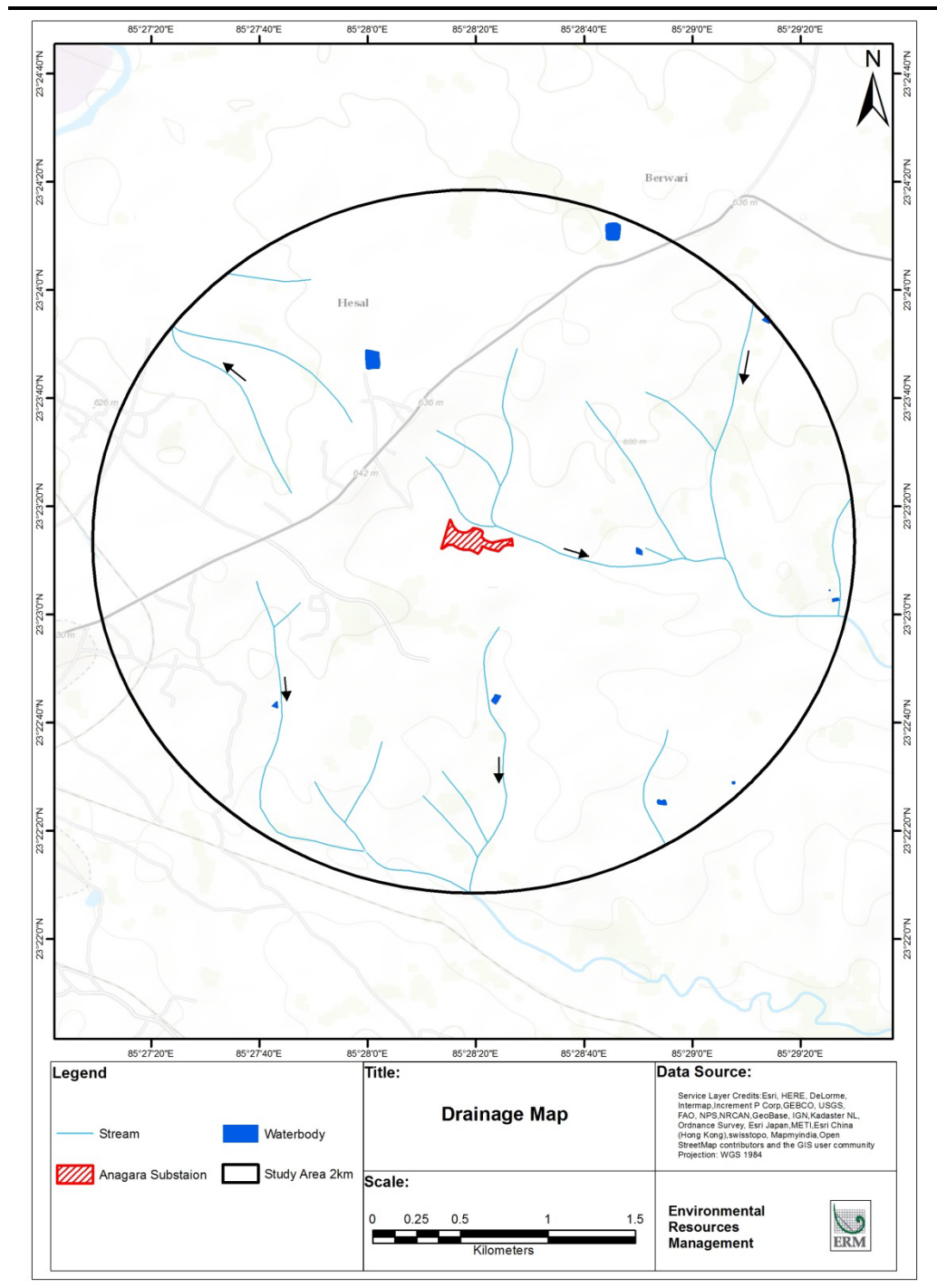
The ambient noise quality of the study area is also representative of ambient noise quality typically expected in rural residential areas. No industrial set up is observed in 500 meter of the proposed GSS site. The source of noise is transportation of vehicles through Ranchi Purulia road. However no significant noise levels were reported by the villagers during consultations

5.7

DRAINAGE

The study area has a dendritic drainage pattern that is representative of the drainage characteristics of the micro-watershed adjacent to site and is shown in *Figure 5.3*. As per the site assessment, there is no defined drainage channel present within the proposed GSS site and immediate vicinity. Only few micro drainage channels present which carry the runoff water from site surrounding to nearest tributary of Raru river in the south east of the proposed site. The topographical surveys carried out by M/s Tata Consulting Engineers also confirm that the highest contour runs along the Hesal Bahya village road (located to the West of the site). The lowest contour (605m) is located on the northern boundary of the site.

Figure 5.3 Drainage Map of the Study Area



5.8 GROUND WATER RESOURCES

As per the hydrogeological map of the District drawn up by the CGWB, the hydrogeology comprises of consolidated formation of the Archean age and characterized by Gneissic complex in which the ground water is restricted to a weathered residuum, having secondary porosity. As of 2013, the gross ground water draft for all uses in the Block was 214.98 ha-m and the stage of ground water development was about 8.69 %.

From the aquifer characteristic and water resourcing angle, the depth to water table in the Angara Block is reported to vary between 6-8 m bgl during pre-monsoon season whereas between 4-6 m bgl during post-monsoon season (as per CGWB Groundwater Information Booklet for Ranchi District, 2013). The dug wells generally tap the initial shallow aquifer and many of such wells dry up during summer months. The hand pumps generally tap the first fracture zones in the lateritic terrain at depths of 30-40 m.bgl while the bore wells tap the deeper granite terrain zones, where the first fracture occurs between 50 – 70 m and the second fracture between 100-120 m bgl. Discharge of the bore wells range from 10 – 30 m³/hr and with a drawdown between 13 to 20 m.

Consultations with villagers in the study area revealed that ground water is predominantly used for drinking and domestic purposes and is sourced through dug wells or tube wells. From the ground water quality perspective, the water quality has been found to be potable in general and from the ground water quality perspective, ground water parameters are within permissible limit.

5.9 SURFACE WATER

There is no such big surface water body is present with the 2 km periphery of the proposed site except some pond which is used by local community for their daily use.

5.10 ECOLOGICAL ENVIRONMENT

The proposed GSS site in Ranchi district of Jharkhand State falls in 6B Deccan Peninsula – Chota-Nagpur Bio-geographic Province¹.

In Ranchi district, about 1794.54 sq. km of forest area is present, which is about 23.7% of the total geographic area of the district.

Natural vegetation in the region can be broadly classified into C3 Moist Mixed Deciduous Forest and 5B Northern Tropical Dry Deciduous Forests. The dominant species in the region is Sal (*Shorea robusta*).

C3 Moist Mixed Deciduous Forest – Sal (*Shorea robusta*) is the dominant species. Other species that are associated with sal, in this type of forest are *Terminalia tomentosa*, *Diospyros melanoxylon*, *Buchanania latifolia*, *Anogeissus latifolia*, *Haldina cordifolia*, *Lannea grandis*, *Boswellia serrata* etc.

5B Northern Tropical Dry Deciduous Forests – In this region dry deciduous forest are found in the drier parts, mostly in the upper ridges. Here also the dominant species is sal (*Shorea robusta*). Other species that are associated with

¹ http://iipsevis.nic.in/Database/Envis_5275.aspx

sal are *Terminalia belerica*, *Terminalia chebula*, *Haldina cordifolia*, *Madhuca latifolia*, *Butea monosperma*, *Diospyros melanoxylon*, *Ailanthus excelsa*, *Cassia fistula* etc.

5.10.1 Vegetation within the Study area

Vegetation within the site is represented by one mohua tree (*Madhuca latifolia*) and few herbs and shrubs. Vegetation within the study area is represented below.

Homestead plantation

During the primary survey trees like, mohua (*Madhuca latifolia*), Imli (*Tamarindus indica*), date palm (*Phoenix dactylifera*), sugar palm (*Borassus flabellifer*), neem (*Azadirachta indica*), semal (*Bombax ceiba*), aam (*Mangifera indica*), peepal (*Ficus religiosa*), wad (*Ficus benghalensis*) etc. were found to occur frequently in human settlement.

Roadside plantation

Along the roadside following trees were recorded gulmohor (*Delonix regia*), babool (*Acacia nilotica*), mohua (*Madhuca latifolia*), kadam (*Haldina cordifolia*), semal (*Bombax ceiba*), peepal (*Ficus religiosa*), wad (*Ficus benghalensis*).

Invasive Alien species (IAS)

Major invasive species recorded during the study are: *Acacia auriculiformis*, *Lantana camara*, *Parthenium hysterophorus*.

5.10.2 Wildlife Habitat and Faunal Diversity

Wild Life Habitat

No Sensitive Ecological Habitat like National Park, Wild Life Sanctuary, Tiger Reserve or Elephant Reserve is located within 2 km from the proposed GSS site.

Faunal Diversity

Herpetofauna

Two species of amphibians viz. Indian Bull frog (*Duttaphrynus melanostictus*), Indian Bullfrog (*Hoplobatrachus tigerinus*) etc. are observed from the study area. All the species are listed Least Concern as per IUCN Classification (IUCN Version 2017-3). Four species of reptiles were observed/reported from the study area. The list includes Russel's Viper (*Daboia russellii*), Common Krait (*Bungarus caeruleus*), Indian Rat Snake (*Ptyas mucosus*) and Oriental Garden Lizard (*Calotes versicolor*). The list includes two Schedule II species viz. Russel's Viper, Indian Rat Snake.

Avifauna

A total of 31 species were recorded from the study area. The species list includes terrestrial and aquatic birds. Terrestrial and aquatic birds recorded are presented below

Terrestrial birds- Shikra (*Accipiter badius*), Common Myna (*Acridotheres tristis*), Paddyfield Pipit (*Anthus rufulus*), Little Swift (*Apus affinis*), House Swift (*Apus nipalensis*), Common Pigeon (*Columba livia*), Indian Roller (*Coracias benghalensis*), House Crow (*Corvus splendens*), Asian Palm Swift (*Cypsiurus balasiensis*), Black Drongo (*Dicrurus macrocercus*), Black Winged Kite (*Elanus caeruleus*), Asian Koel (*Eudynamis scolopaceus*), Green bee-eater (*Merops orientalis*), Black Kite (*Milvus migrans*), House sparrow (*Passer domesticus*), Baya weaver (*Ploceus philippinus*), Plain Prinia (*Prinia inornata*), Rose-ringed Parakeet (*Psittacula krameri*), Red-vented Bulbul (*Pycnonotus cafer*), Indian Robin (*Copsychus fulicatus*), Laughing Dove (*Spilopelia senegalensis*) etc.

Aquatic birds- Asian Openbill (*Anastomus oscitans*), Indian Pond Heron (*Ardeola grayii*), Cattle Egret (*Bubulcus ibis*), Pied Kingfisher (*Ceryle rudis*), White-throated Kingfisher (*Halcyon smyrnensis*), Intermediate Egret (*Ardea intermedia*), Little Cormorant (*Microcarbo niger*), Purple Swampphen (*Porphyrio porphyrio*), Red-wattled Lapwing (*Vanellus indicus*), White Wagtail (*Motacilla alba*) etc.

Shikra (*Accipiter badius*) and Black Kite (*Milvus migrans*) are listed as Schedule I as per Wildlife Protection Act, 1972.

Mammals

Total 8 species of mammals are reported/recorded from the study area. The mammals observed/ reported in the study area are Nilgai (*Boselaphus tragocamelus*), Common Grey Mongoose, Five-striped Palm Squirrel, Golden Jackal, Indian Flying Fox, Northern Plains Langur, Rhesus macaque, House Mouse etc. The list includes four Schedule II species Golden Jackal, Common Grey Mongoose, Northern Plains Langur and Rhesus macaque.

Five-striped Palm Squirrel (*Funambulus pennantii*), Bengal Fox (*Vulpes bengalensis*), Golden Jackal (*Canis aureus*), Common Grey Mongoose (*Herpestes edwardsii*), Indian Flying Fox (*Pteropus giganteus*), Northern Plains Langur (*Semnopithecus entellus*), Rhesus macaque (*Macaca mulatta*), House Mouse (*Mus musculus*),

5.11

SOCIO ECONOMIC ENVIRONMENT

Proposed Angara substation is located in Ranchi district. The population of Ranchi district according to the 2011 census is 2,914,253 which were 2,785,064 as per the census of 2001, registering a decadal growth of 4.63%. The analysis reveals that Ranchi district accounts for 8.9% of total population of Jharkhand

State. Whereas the literacy rate in Ranchi district is 77.13% as against the state figure of 67%.

According to the 2011 census the sex ratio is 950, which is comparatively better than the state average of 940. The ST population constitute 35.6% against the state figure of 26.2% but the opposite trend is found in case of the SC categories, i.e 5.2% SC population in Ranchi district against 12.08% of the State.

Total household in Angara block, where the proposed Angara GSS project site is located, is reported to be 22572 with average household size of 5.00. The total population of the Angara block is 112759 as per Census Report 2011. The literacy rate is 64.92% and the sex ratio is reported to be 984.

Demographic Profile of the Study area Villages

Proposed GSS land is situated in Hesal mouza of Angara block, whereas four villages are located within the 2 km study area i.e. Hesal, Masu, Berwari, Lupung located in Angara block. As per the 2011 Census records, the study area has a total of 2172 households and a population of 10698. The entire population in the study area falls in the rural category. Key demographic data of the villages within the study area represents the fact that mostly villages are sparsely located as population density of mostly villages of the study areas are lower than population density of the corresponding district level population density data. Demographic profile of the study area villages are presented in *Table 5.2*.

Table 5.2 *Demographic profiles of the villages located within study area*

Village	Total Household	Total Population	Average Household Size	Male	Female	SC Population	ST Population	Literary Rate (%)	Male Literary rate (%)	Female Literary rate (%)
Masu	236	1233	5.22	619	614	15	463	65.16	76.64	53.44
Hesal	1031	5207	5.05	2636	2571	120	1640	70.07	82.52	57.38
Berwari	484	2327	4.81	1164	1163	115	442	74.89	85.89	64.09
Lupung	421	1931	4.59	978	953	0	247	62.96	73.74	52.21

Source: Census 2011 Data

Demographic Profile of Surveyed Population of Hesal Village

A general socio economic survey of 50 households was conducted during the month of December, 2017 as a part of the ESIA study to validate the present socio-economic scenario of Hesal village. The questionnaire template used for administering the survey is presented in Annexure 9. Community consultations were also conducted to supplement the survey findings.

Total no of surveyed population is 229 residing in 50 household and average household size is 4.58 which is lower than the household size recorded in the

Census data. Among the 229 surveyed populations, total male and female population is 52.40% and 47.50% respectively and the sex ratio is 908.

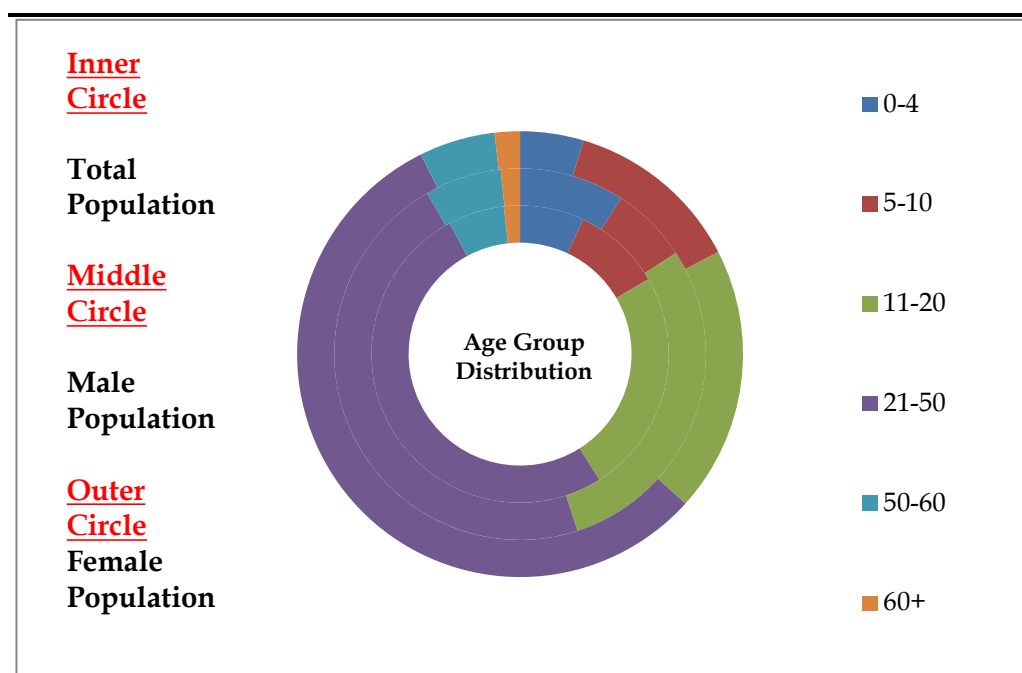
Table 4.3 *Demographic profiles of the Surveyed Population*

Village	Total Household	Total Population	Average Household Size	Male	Female	SC Population	ST Population	Literary Rate (%)	Male Literary rate (%)	Female Literary rate (%)
Hesal	50	229	4.58	52.40	47.60	0.00	67.69	69.48	77.06	61.54

Source: ERM Socio Economic Survey

Age group distribution of the surveyed population show that maximum number of population belongs to the working age group of 21 to 50 followed by the young age group (11 to 20) which potentially will become the working age group in the future. *Figure 5.4* represents the age group distribution of the surveyed population.

Figure 5.4 *Age Group Distribution of the Surveyed Population*



Source: ERM Socio Economic Survey

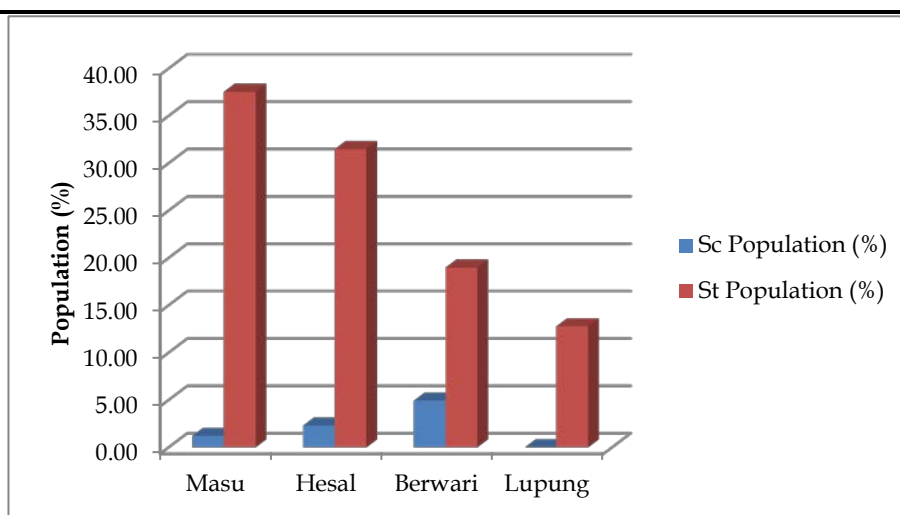
SC/ST Population

The scheduled tribe population in the study area is 25.21%, which is lower than the district figure of 35.6% as per Census 2011 data. Proportion of SC and ST Population in the study area is captured in *Figure 5.4*. Caste and community profile of the study area further reflects that percentage of Scheduled Tribes (ST) population is almost quite significant in the study area. Masu and Hesal village is having 37.55% and 31.50% ST population respectively. Other than that Berwari (18.99%) and Datma (12.79%) also has St Population.

Percentage of Scheduled Tribes (SC) population is almost negligible in the study area. However village Berwari is having maximum percentage of SC population (4.94%) among the entire study area and in other three villages SC population is ranges between 0 to 2.30%.

Remaining population are further classified into three major groups; General cast and OBC (Other Backward Caste) that is not accounted for in the Census survey of India. Consider the project activities no impacts are envisaged on the SC and ST Population of the area.

Figure 5.5 *Proportion of SC/ST Population in the Study Area vis-à-vis Block/District*

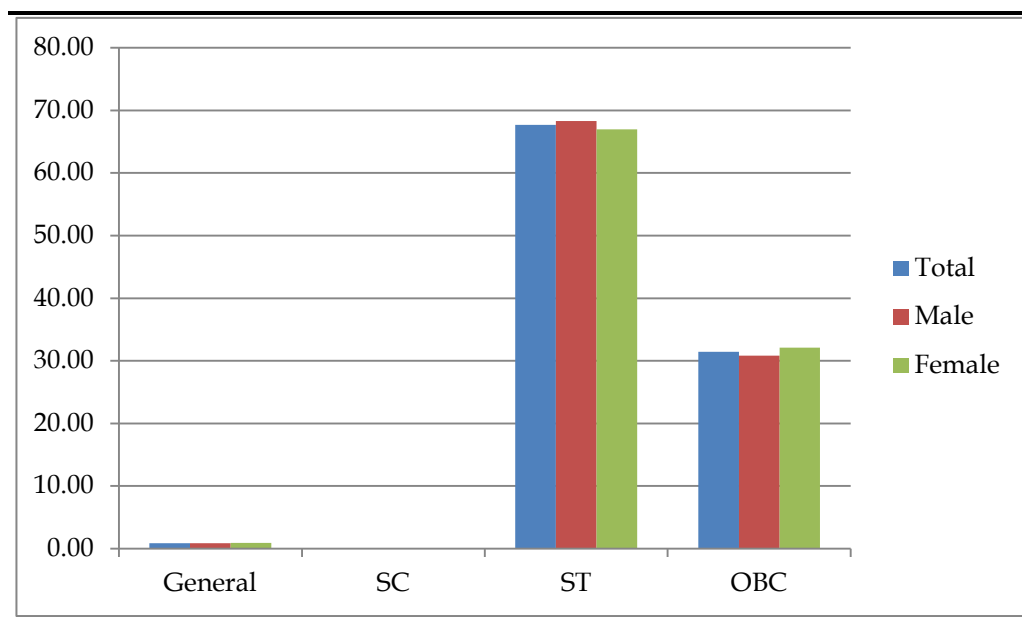


Source: Census 2011 Data

SC & ST Population of Surveyed Village (Hesal)

Among the 156 surveyed populations, ST population is 155 which is 67.69 percent of the total surveyed population they resides in 35 household which is 70 percent of total surveyed households. Other caste like general and OBC population is 0.87 percent, 31.44 percent respectively however SC is not present in the Hesal village. It can be observed that ST is the predominant caste in Hesal Village. Male and female ST population surveyed is 68.33 percent and 66.97 percent respectively. **Figure 5.6** depicted the cast wise distribution of the surveyed population.

Figure 5.6 Caste Distribution of the Surveyed Population of Hesal Village



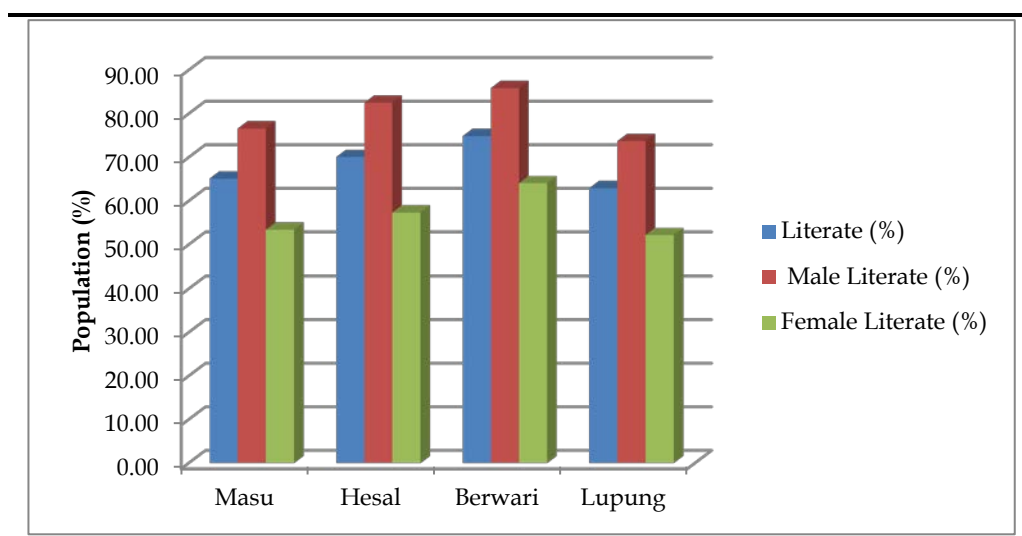
Source: ERM Socio Economic Survey

5.11.2 Education profile

Literacy Profile

Literacy status of the study area villages is presented in **Figure 5.5** and it suggests that the average literacy rate in study area villages (68.27%) is lower than that observed at the State level (77.13%). Female literacy rate (56.78%) is also lower in all the study area villages. A general trend of education level attainment in study area as observed during consultation is that mostly teenagers drop out after Secondary School and key reasons against this higher drop-out rate were economic conditions of the families as well as lack of quality education.

Figure 5.7 Literacy profile of the study area villages



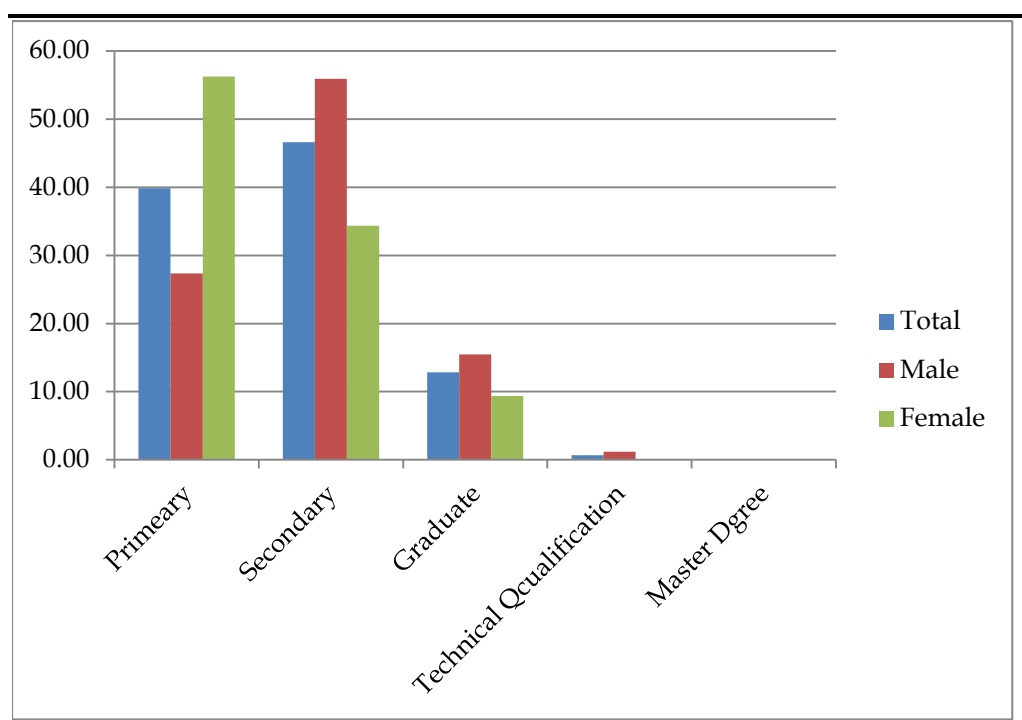
Source: Census 2011 Data

Educational profile of Surveyed Population of Hesal Village

Out of total 229 surveyed population 69.48 percent are literate and 30.52 percent are illiterate. Male and female literacy rate is 77.06 percent and 61.54 percent respectively and illiteracy rate is higher amongst the female population in comparison of male population.

Educational status of surveyed population shows that maximum category of population are either educated up to the secondary level or continuing their education in secondary level. Educational status of the surveyed population presented in *Figure 5.8*.

Figure 5.8 *Educational Status of the Surveyed Population*



Source: ERM Socio Economic Survey

Educational Infrastructure

The assessment of education facilities and education promotion programs provided by the government in study area indicates that available education infrastructures in terms of number of schools are not adequate. Number of schools and colleges existing in study area villages is shown in *Table 5.3*. The information is compiled from village directory, 2011. The table reflects that each village is having a primary Middle school in its peripheral boundary. But numbers of high secondary, higher secondary and college is present in Tatisilwe area of Angara block.

Table 5.4 *Schools facilities in study area*

Study Area Villages	Pre-primary school	Primary school	Middle school	Secondary school	Senior secondary school	Degree college
Masu	N	Y	N	N	N	N
Hesal	N	Y	Y	Y	Y	Y
Berwari	N	Y	Y	N	N	N
Lupung	N	Y	Y	N	N	N

Source: Village Directory, Census 2011

Educational Infrastructure of Surveyed Village

All respondents informed that all type of educational infrastructure i.e. Primary school, secondary and collage is present within 1 to 1.5 km of the village.

Occupational Pattern

The most important factor, which governs the occupational pattern of an economy, is the availability of the total work force in an economy. The analysis of workers' profile reflects that 25% of total population of Ranchi District is total main workers, 15% are marginal workers and 60% are non-workers, who depend for their livelihood on the toils of the main workforce. The non-workers comprise of old, diseased, disabled and most of them are children of non-working age group beside housewives.

In case of Angara block, 38.34% of the total population comprises the total worker population. Of the total working population, 63% are main workers whereas 36% comprises the marginal worker population. The employment pattern in this area suggests that 45.69% of local people are employed in agricultural sector category whereas 32.90% workers are engaged in other sector.

Occupational Pattern of the Study area Villages

Agriculture is the mainstay of the local economy of the study area. Agriculture labourers constitute significant portion among the different occupation followed by the people in study area. Classification of working population of the study area as well as of the study area as per census 2011 data is presented in the *Table 5.4*.

Table 5.5 *Occupational pattern of villages in the study area*

Name of the village	WPR	Main Workers	Marginal Workers	Cultivator	Agricultural Labourers	Household Industry	Other Workers
Masu	33.09	80.39	19.61	4.41	0.25	17.16	78.19
Hesal	37.78	64.77	35.23	20.03	10.02	2.14	67.82
Berwari	35.45	90.18	9.82	27.03	7.39	4.61	60.97

Name of the village	WPR	Main Workers	Marginal Workers	Cultivator	Agricultural Labourers	Household Industry	Other Workers
Lupung	49.92	64.83	35.17	21.78	23.24	5.50	49.48

Source: Census 2011 Data; Note: WPR – Work Participation Ratio

Work Participation ratio (WPR) ⁽¹⁾, defined as percentage of total workers including main and marginal workers out of the total population of the study area, is 39.06% which suggests the study area villages have relatively higher unemployment rate as most of people are involved in agriculture.

Other noticeable aspects as evident in the above table is that proportion of Agriculture Labourer (AL) is relatively high in all the study area villages which indicates number of farmers having sufficient land holding for their livelihood is on lower side in study area and community consultation also reveals that most of the people of local community has marginal to small landholding which is not sufficient for earning their livelihood.

Economic Status of the Surveyed Population

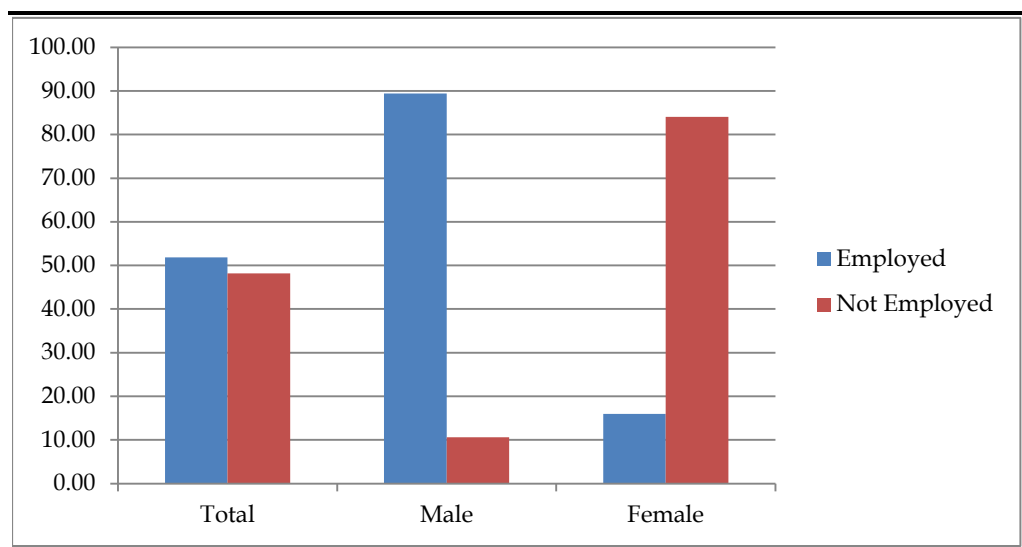
The survey conducted by the ERM team revealed that maximum (48.00 percent) household is under below poverty level and only 52.00 percent household is above poverty level.

Employment Status of the Surveyed Population

It can be seen from the primary survey data that 51.85 percent of the surveyed population above the age of 20 are employed while 48.15 percent population are not employed. The male and female employment rates among surveyed households were found to be 89.39% and 15.94% respectively. It can also deducted from figure below that unemployment rate is higher in female population than the male population. This is because most of the women in the village were mainly involved in household work. Employment status of surveyed population is presented in *Figure 4.9*.

(1) Work Participation ratio (WPR) is defined as percentage of total workers including main and marginal workers out of the total population of the study area

Figure 4.9 *Employment Status of the Surveyed Population*

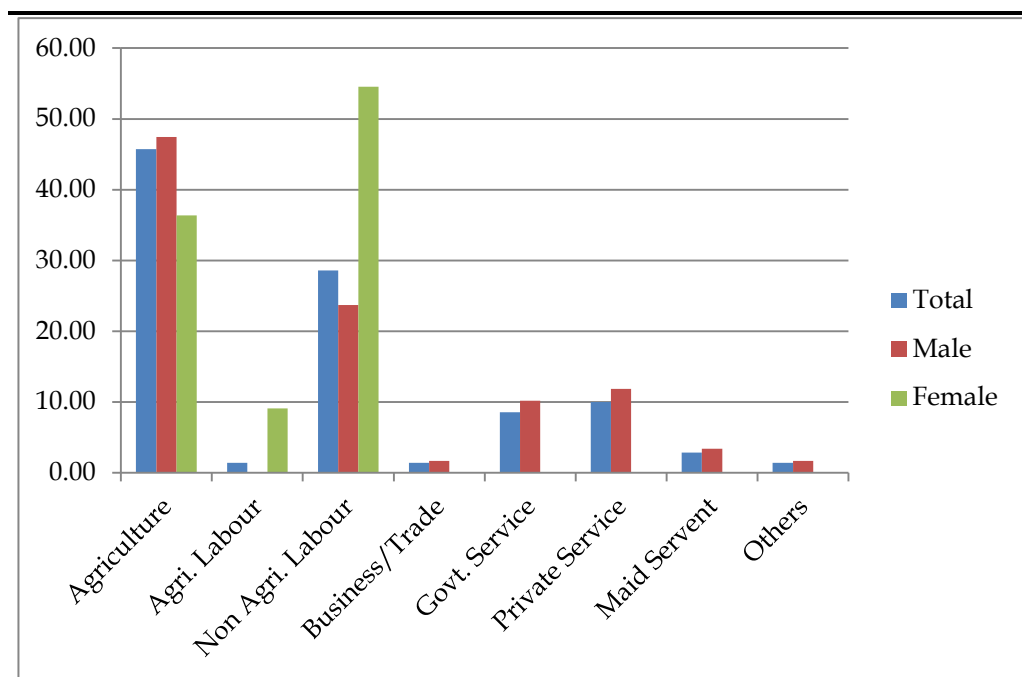


Source: ERM Socio Economic Survey

Occupational Pattern of the Surveyed Population

Among the surveyed population maximum number of people is involved in agricultural activity in their own land followed non agri. labour. **Figure 5.10** represents the occupational pattern of the surveyed population.

Figure 5.10 *Occupational Pattern of the Surveyed Population*



Source: ERM Socio Economic Survey

5.11.3 *Skill of the Surveyed Population*

Survey data show that the residents of this village are not having significant indigenous skills.

5.11.4 *Drinking Water & Sanitation Facilities*

The social organization and settlement pattern in the study area is predominantly arranged around the available agricultural land and water resources in the area. Land based livelihood being the key feature of the community, proximity and availability of water is often linked to the economic status of the family/ household. Also typically in a village, water for drinking and other purposes defines the household hygiene/ sanitation and ultimately the standard of living of the community. For drinking purpose, availability of water is mostly in the form of:

- Ground water sourced through hand pump and well serve mostly to the needs of household drinking water consumption however no filtration facility is available for drinking water;
- Supply of water is not available in study area villages;

As per community consultation very few household in the village have access to individual sanitation facility and majority of the community reportedly resort to open defecation.

Primary surveys revealed that maximum (88 percent) number of family are dependent of dug well in spite of hand pump for fulfilling their drinking water and domestic use water requirement. Only 12 percent households are dependent on hand pump. But all the sources both hand pump and dug well are shared resources among the families.

5.11.5 *Irrigation*

Community consultation reveals that irrigation facilities in study area seem to be extremely poor as farmers reported to be entirely dependent upon rain water for irrigating their field. Though use of water drawn from wells was reported, the same was confirmed to be rare.

5.12 *HEALTH INFRASTRUCTURE*

Health care infrastructure of the study region is captured in the table below.

Table 5.6 *Health care facilities in study area*

Study villages	Hospitals	PHC	Sub-Centre
Masu	Y	N	N
Hesal	N	N	N
Berwari	Y	Y	Y
Lupung	Y	Y	N

Source: Village Directory, Census 2011

Above **Table 5.5** shows that health infrastructure located in study area villages. There are three hospitals located within the Study area.

Primary survey reveals that entire population is dependent on govt. health facility in Angara nearly 3 km away on the Ranchi Purulia road.

5.13 *OTHERS PHYSICAL INFRASTRUCTURE*

Road & Transportation

All the study area villages is connected with Anagara through metal road through SH 1 (Ranchi Purulia Road). For the local transportation, use of auto rickshaw is very common in the study area.

Electricity

All study area villages have access to electricity supply and most of the households were reported to be connected with the existing electricity supply network.

Postal Service, Bank, Telecommunication

As per 2011 census data, only Masu and Hesal village in the study area is having a post office in its peripheral boundary. However, none of the villages in the study area have operational branches of banks. Nearest bank facility is available in Angara

Status of Govt. of Scheme Implementation in Hesal Village

Implementation of Govt. Schemes is not in full force in the surveyed village. Swachh Bharat Abhiyaan (toilet) and Udyami Sakhi mandal Yojna are two most successfully implemented govt. schemes in the village. Total 11 households each (22% of surveyed household) are beneficiary of these two schemes.

This section identifies and assesses the potential impacts to the physical, biological and socioeconomic environment that can be expected from the proposed substation project at Angara. The impacts due to the Project activities across different phases have been identified and assessed. Impacts are identified and predicted based on the analysis of the information collected from the following:

- Project information (as outlined in *Section 3*);
- Baseline information (as outlined in *Section 4*).

6.1

POTENTIAL IMPACT

The identification of likely impacts during construction and operation phases has been carried out based on understanding of activities and their consequent impacts on various environmental and socio-economic resources or receptors. The impact identification matrix in Table 6.1 captures the likely interactions between the activities on one axis and the resources / receptors on the other axis.

Table 6.1 *Environmental and Social Impact Identification Matrix*

Project Activity/ Hazards	Environmental Resources										Ecological Resource				Social-Economic Resources									
	Aesthetic & Visual Impact	Land Use	Soil Quality	Air Quality	Noise & Vibration	Topography & Drainage	Surface water resource	Surface water quality	Ground water resource	Ground water quality	Traffic (Road)	Terrestrial Flora	Terrestrial Fauna	Aquatic Flora & Fauna	Protected /Migratory Species	Migratory Path/Corridor	Job & economic opportunity	Economy & Livelihoods	Common Property Resources	Land Use (Economic Displacement)	Infrastructure & Services	Cultural Resources	Community Health & Safety	Occupational health & safety
Construction Phase																								
Land Procurement																								
Clearance (Vegetation & other structure)																								
Site Development (cutting & filling)																								
Construction of Site approach road																								
Transportation of construction materials, equipment & machineries																								
Storage & handling of construction materials																								
Construction of switch yard and Other building																								
Storage, handling and disposal of construction waste																								
Generation of sewage and discharge																								
Sourcing of construction water & domestic water																								
Surface Runoff from construction site																								
Operation Phase																								
Physical presence of sub-station																								
Maintenance of Substation & generation of transformer oil and e-waste																								

Project Activity/ Hazards	Environmental Resources										Ecological Resource				Social-Economic Resources									
	Aesthetic & Visual Impact	Land Use	Soil Quality	Air Quality	Noise & Vibration	Topography & Drainage	Surface water resource	Surface water quality	Ground water resource	Ground water quality	Traffic (Road)	Terrestrial Flora	Terrestrial Fauna	Aquatic Flora & Fauna	Protected /Migratory Species	Migratory Path/Corridor	Job & economic opportunity	Economy & Livelihoods	Common Property Resources	Land Use (Economic Displacement)	Infrastructure & Services	Cultural Resources	Community Health & Safety	Occupational health & safety
Sourcing of water for earthling pit & residential units																								
Storm water runoff																								
Generation of MSW & Disposal																								
Generation of sewage & discharge																								
<div></div>	= Represents “no” interactions is reasonably expected																							
<div></div>	= Represents interactions reasonably possible but none of the outcomes will lead to significant impact																							
<div></div>	= Represents interactions reasonably possible where any of the outcomes may lead to potential significant impact																							

The details of the activities and their impacts have been discussed in detail in the following sections.

6.1.1 *Impacts on Aesthetics & Visual Quality*

Potential impacts to aesthetics and visual quality because of the setting up and operation of the Angara GSS may arise because of two key factors – disruption and degradation of views in the surrounding landscape; and, use of nighttime lighting for construction and security purposes. Visual impacts of GSS projects along with associated transmission lines (in and outgoing) are highly variable and depends on several factors like location of the project, lines of sight, scenic vistas and most importantly the perception of the people. Degradation of views from setting up of the GSS in the identified plot of land may result from cutting of trees and vegetation clearance, handling of construction and domestic wastes, and setting up of physical infrastructure (including some transmission towers which are to be constructed on the boundary of the site) associated with the GSS. After the GSS is commissioned, night-time security lighting would be operational and would lead to addition of strong artificial lights in what is at present is a predominantly rural area with no street or external lighting. With the study area, not being recognized as a place of natural scenic beauty or a touristic destination, these factors are unlikely to lead to any significant adverse visual and aesthetic impacts in the area and it can be rated as **negligible**.

6.1.2 *Air & Noise Quality*

The GSS is not planned to house any point or area source of air emissions (particulate matter, pollutant gases, etc.). However few small scale industry is present within the study area but all of them are located beyond 500 meter periphery of the proposed site and chance of emission of air polluting substance from this industry is very limited– the State Highway-1 (Ranchi Purulia Road) passing 400 meter away from the north western corner of the proposed site, through which regular vehicular movement occurs is the only line source of air pollution, caused by vehicular emissions and because of re-entrained dust from the road surface. Based on visual observations, the quality of the air shed can be categorized as good and no indicators of air pollutants were noted in the study area that could potentially result in air quality parameters to exceed National Ambient Air Quality Standards (NAAQS).

During site preparation and construction, the project is likely to generate dust (as particulates) in spite of best efforts to control it and there will be times during the construction phase when elevated dust concentrations may occur. Higher amounts of dust will be generated at places where earthwork, cutting and filling operations take place or in material handling and storage areas. A large percentage of such dust emissions from construction sites have been found to comprise of particles which are coarse in size (>10 microns) and has a tendency to settle down within a few hundred meters of the source of emissions. The smaller fractions (PM10) can however be carried over longer distances in a dust cloud, in the case wind velocity is higher and depending

on prevailing wind direction maybe deposited in the adjoining *tola's* of Hesal village or the settlements of Berwari and Masu with a potential to cause soiling of residential premises, deposition on agricultural crops, etc.. However, this will be a short-term impact lasting for a few months. Particulates, CO, SO_x, NO_x and unburnt hydrocarbons (VOCs) will be emitted by vehicles, batching plants (if used), heavy equipment and DG sets associated with site clearing and construction activities.

The operational GSS site at Angara will not have any specific source contributing to air emissions. However, the site will house transformers, switches and associated cables which may contain insulating gases such as Fluorocarbons and Sulfur hexafluoride (SF₆). If accidentally released during maintenance work or equipment overhauling, they may release these gases which are categorized as greenhouse gases and having significantly higher global warming potential (GWP) than CO₂. The frequency of such non-routine incidents is predicted to be very few in the entire lifecycle of the operation of the GSS. Overall, the impact on air quality during the construction and operational phase of the project can be rated as **negligible to minor**.

Noise and vibration at the Angara GSS site is expected to be primarily generated during the site preparation and construction phases of the project. Such noise may be generated from blasting (if required), operation of heavy construction equipment and machineries, DG sets and the transportation of equipment and materials. During operational phase, the transformers and switches to be installed within the GSS would also emit typical humming noise caused because of magnetostriction (involving the expansion and contraction of the iron core due to the magnetic effect of alternation current flowing through the transformer coils). Though the emitted noise may vary in characteristics depending on the rating of the transformer, typically the intensity and amplitude transformer emitted noise is about 120 Hz and 55 dB (A). As the transformers and other sound emitting equipment would be located well within the boundary of the site, any incremental contribution to the ambient noise quality at the boundary of the site would be negligible.

The study area has no major noise sources, except for vehicular noise on the adjacent State High Way-1. The noise generated from the construction phase activities is likely to be attenuated to acceptable levels as per the ambient noise standards within 200 m of the site. Such noise may not create any problem for the local community as there is no settlement is located within 200 meter of the proposed site however, it may cause discomfort the construction workers only. The construction activities, especially those with a potential to generate high noise levels would be temporary in nature and are not expected to last more than 6 months. The spatial scale of impact will be limited to a few hundred meters. The overall significance of the noise related impacts is rated as **minor**.

6.1.3 *Impact on Land use, Soil & Drainage*

The proposed Angara GSS is planned to be constructed over 10 acres of land. The present land use of the site is categorized as GM land (Parti Kadim)

without any vegetation cover. JSUNL will divert the land use of the tract of land to industrial use and this would result in a permanent change of land use. Because of the nature of the project and low level of anthropogenic activity to be associated with the site during operational phase, it is unlikely that the GSS project would induce any significant change of land use in other land parcels in the immediate vicinity.

As the site is located on a flat land with a gentle slope, the preparation of land for the construction activities at site would involve soil stripping and limited cutting, filling and levelling activities in order to make the site topography suitable for setting up of the GSS. As the site has lateritic soil which is loose in nature, removal of top soil can increase the potential for soil erosion during a short period of time till the site is levelled and then stabilized with fill materials like gravel, sand and fly ash. There is also a potential for local level changes in drainage pattern of the area, though the drainage to the second order drainage to the north north-east of the site is unlikely to be affected because the prevailing gentle slope leading to the catchment of the drainages. If proper soil erosion control measures are implemented, these impacts will be in the short term and unlikely to be severe in terms of scale and magnitude.

Disposal of solid waste and spills of lubricants, fuels and chemicals during land clearing, terrain sloping, levelling and construction activities creates the potential for soil and water contamination. The specific type of solid wastes likely to be generated during the construction of the Angara GSS sites would include defective or compromised building materials, waste concrete, wastes from on-site machineries and repair of machineries and equipment, packaging pallets and crates and wastes associated with on-site activities of workers (in relation to the number of workers present) like domestic solid wastes.

6.1.4 *Impact on Water Resources*

Water resourcing requirements for a GSS project are minimal, as there is no process or activities that require a steady supply of water. In the operational phase, water would need to be sourced on the long term to meet the domestic needs of about 16 – 20 people and the daily requirement would be about 8.4 KLD. The water requirement during the construction phase is expected to be more intense – an estimated amount of 10-12 KLD (including provision for domestic water supply to labourers of approx. 2 KLD) and about 3-4 KLD during the rest of the construction period. It is estimated that the civil works would be completed within 1 year and the construction phase would last 2 years.

With no nearby source or provision to provide piped or treated water from a surface water being present, the project would depend on extraction of ground water resources, using a bore well, to be dug at site. The bore well would be planned to extract water from the deeper aquifers which are at the level of 50 to 120 m. As per CGWB report (2013), the level of ground water development in the Angara Block is 9% (expected yield of 10 – 30 m³/hr, and with an anticipated drawdown of 13 - 20 m) should be sufficient to meet the water requirement of the Angara GSS during the short to medium term. The

neighboring settlements source water using dug wells and tube wells and both of them utilize the shallow, near shallow aquifers; so, there is expected to be no conflicting demands on ground water resources. Considering the amount of water planned to be sourced, the limited spatial extent which would be impacted and the sensitivity of the resource, the significance of the project's impact on water resources can be considered to be **minimal**.

6.1.5 *Impact on Biological Environment*

As discussed earlier, there is one mohua (*Madhuca latifolia*) tree just beside the approach road and few shrubs and herbs within the site. Site preparation will involve removal of the mohua tree and few shrubs and herbs present at site from the site which will cause change in the modified habitat within the site leading to a loss of floral biodiversity at local level.

Faunal species that have high probability of occurrence within the site include amphibians (Common toad), reptiles (lizards and snakes), birds (House crow, Common sparrow, Common myna, Drongo, Indian Roller, doves, parakeets, kites etc.) and mammals (Indian Grey mongoose, squirrels, mouse etc.). Removal of vegetation from the site can adverse on residential burrowing faunal species *viz.* reptiles (lizards and snakes), ground roosting birds (sparrows, pigeon, doves etc.) and mammals (mongoose, mice etc.). In most cases however it has been observed that faunal and bird species to migrate to other local habitats which are adjacent, if the land affected is not very large.

The floral species that would be affected because of site clearance and preparation are few shrubs and herbs. The loss of shrubs and herbs from the site will not create any habitat degradation or fragmentation in the area. None of the floral or faunal species expected to be present within the site is threatened as per IUCN Classification (Version 2017-3). Vegetation clearance may affect the faunal species mentioned above, however, there are similar habitats in the vicinity and the species can easily relocate to those areas. The scale of impact will be medium as it causes irreversible damage to a modified habitat. Duration of the impact will be long term as vegetation clearance would create a permanent impact within the site area. Extent of the impact would be only within the project site and immediate vicinity.

Construction activities will include excavation, movement of machineries, increased anthropogenic movement (men and transport) and may lead to minor disturbances to floral and faunal habitats in the vicinity of the site because of deposition of dust, noise and light generated during construction activities may affect feeding, breeding and movement of animals. However, these disturbances will be for a temporary period and expected to be of low magnitude and local in scale.

During the operation phase, several species of birds identified during the ecological study which can perch (*viz.* doves, pigeon, mynas, kites etc.) or make nests within the GSS area (*viz.* sparrows, pigeons, doves etc.) with a possibility for electrocution. The same could occur to small mammalian species like mongoose, macaques, langurs may get electrocuted within the

GSS area. However, the chances of birds and mammalian species getting electrocuted within the GSS site are rare; moreover the species having the potential to get electrocuted are common in the area and of low sensitivity. Overall the significance of impact on biological environment can be rated to be between **minor to moderate**.

6.1.6 *Impact on Socio-economic Conditions*

Proposed Angara GSS will be constructed on 10 acres of land which belongs to the government and therefore would not require any land acquisition (through any involuntary mechanism / application of powers of eminent domain) or negotiations for purchase of land for setting up the project. In addition, no encroachments or encumbrances within the land parcel either in form of agricultural or residential uses was noted within the demarcated site and as a result no displacement or adverse impact on livelihoods (of people) are expected because of the uptake of land to build the GSS. In terms of cultural and religious property, there is a Satvari (place where they perform an elaborate secondary burial and large stone has been placed for remembrance) located just outside the northern boundary of proposed site- any disturbance may lead to local community agitation. Other than this, no dependency of the local people on the proposed land was recorded during consultations with the community.

However, several nominally positive socio-economic impacts can result from the project. There is scope for generation of indirect employment opportunities generated during the site preparation and construction phases of the project. It is anticipated that about 50 workers would be employed during the construction phase and it is expected that part of these workers, especially need for unskilled workers, would be met from local villages. There would also be a scope for some small contracts to be provided to local contractors for supply of construction materials, vehicles, tractors, etc. In addition, the presence of workers, contractors, engineers during the construction period is expected to stimulate a demand for economic activities (shops, restaurants, etc.) and increased purchase from local businesses. It should be noted that these opportunities would be in the short-term, as the operational phase of the project would involve the deployment a small number (about 8 – 10) of technical skilled workmen (mostly engineers). Both the beneficial and adverse socio-economic impacts can be rated to be **minor** in terms of significance.

6.1.7 *Impact on Community Health and Safety*

Experience shows that because of its nature and scale, project like GSS's can be expected to have a limited interface with the local community and as a result will have minimal impact on the safety and health of local communities. During the construction stage of the project, there will be an influx of workmen and labours, with some of them being from different socio-cultural settings as compared to the villages around site. In the case that hygienic conditions are not maintained at the construction site, there may be a vector borne and other ailments in the immediate vicinity. Unless proper

sensitisation of neighbouring communities is undertaken and appropriate safeguards are adopted, there is a possibility for increase in sexually transmitted diseases, though the possibility appears quite remote.

The site clearing activities and construction activities (involving fill materials, brick and concreting work) would result in emissions of dust and noise, discharge of sanitary waste water and potential littering from labour quarters during a short phase of around 6 months and has a potential to contribute to additional nuisance levels for the local community. However, there is no people living close to the site and the habitation (*tola's*) of Hesal village being located at a distance of 250 m, no significant health related impacts are expected to the communities in the area. The increase in vehicular movements as a result of plying of construction vehicles on the adjoining highway and the site access road would add to the risk of accidents in which local villagers may be involved. In addition, the GSS project would have incoming and outgoing transmission lines (132KV), house transformers and associated equipment which has the potential to create electro-magnetic fields (EMF). Although there is a public concern over the potential health effects associated with the exposure to EMF, empirical data is insufficient to demonstrate adverse health impacts from typical EMF levels originating from high voltage power lines and substation equipment. Considering good construction practices and planned embedded measures for mitigating these impacts, the overall significance of community health and safety impacts can be rated to be **minor**.

6.1.8

Occupational, Health and Safety

During the construction phase of the project, about 50 workers would be involved in construction related activities, some of which are inherently unsafe, unless adequate precautions and safeguards are adopted by the workers and construction site contractors. Safety issues related to construction of the GSS at Angara may involve physical hazards like working at height, exposure to heat, particulate matter, noise and vibration, collision with vehicles/moving equipment; exposure to electrical hazards; exposure to chemicals hazards (both inhalation and physical contact) like organic solvent vapours, reactive and toxic chemicals (acids's, bases, insecticides, etc.). Such occupation hazards would vary with the nature of work undertaken by the workmen, as they may employed by different contractors responsible for doing a particular component of the work.

The construction work would involve several contractors who in turn would engage different labourers having varied skillsets. The duration and extent for most workmen is expected to extend for a few months and the occurrence of any accidents and consequent injuries/fatalities will lead to adverse impacts that could range from loss of productive time to loss of livelihoods (of workmen). If local workers are hired, they may not have appropriate training for adopting a safety culture expected at an industrial construction site – so receptor sensitivity may be anticipated to be high. There is also a possibility of legal non-compliance which may lead to temporary stoppage of work affecting construction schedules. Hence the receptor sensitivity is high.

Overall, the impact significance for occupational health and safety can be considered to be *moderate*.

7.1 INTRODUCTION

A stakeholder is defined as “an individual, group, or organization, who may affect, be affected by, or perceive itself to be affected by a decision, activity, or outcome of a project”. “Stakeholder Analysis” is the process of sorting identified stakeholder groups according to their impact on the project and the impact the project will have on them. This information is then used to assess the manner in which the interests of the stakeholders or projects impact on them should be addressed in the project development plan or its operation.

The importance of stakeholder analysis lies in the assessment and understanding of the socio-political environment surrounding the project. It allows for:

- Identification of the interests, concerns and societal risks surrounding the stakeholders, as well as conflicts of interests (if any);
- Identification of relations between stakeholders that may enable “coalitions” of project sponsorship, ownership and co-operation as well as the mechanisms which may influence other stakeholders;
- Key groups/ individuals to be identified who need to be informed about the project during the execution phase;
- Identifying stakeholders (those who might have an adverse impact on the project) and taking appropriate measures to mitigate their influence; and;
- Development of a framework for participatory planning and implementation of various project activities including interventions for community development.

The identification of stakeholders and their inclusion in the decision-making process is thus essential in the process of prioritizing, analyzing and addressing issues; and in creating management systems and strategies to address the concerns/ expectations of various stakeholders.

The following sub-sections provide a profile of the various stakeholders in the project as well as their concerns and relative influence with regards to the project.

7.2 IDENTIFICATION OF STAKEHOLDERS

The stakeholders who would directly impact or are directly impacted by the project are known as Primary Stakeholders, those who have an indirect impact or are indirectly impacted are known as Secondary Stakeholders. Keeping in mind the nature of the project and its setting, the stakeholders have been identified and listed in the table below;

Table 7.1 *List of key stakeholders*

Stakeholder Category/ Group	Key Stakeholders
Primary Stakeholders	
Local Community	• Local Community
Other Primary Stakeholders	• Jharkhand Urja Sancharan Nigam Limited • World Bank
Secondary Stakeholder	
Institutional Stakeholders	• District Administration • Forest Department • Tribal Development Department
Other Secondary Stakeholder	• Contractors

Consultations with District Administration

Consultation was held with Additional Deputy Commissioner, Ranchi District on 23.05.2017. ADC was briefed on the background of the project and the objective and scope of the ESIA Study and his assistance was sought in forest clearance.

Consultations with Local Communities

Community consultation was conducted in close vicinity of the project boundary to gather the opinion of the public on the proposed project and assess its potential effect on the public especially vulnerable groups. Consultations were carried out with community people residing in the adjacent to the proposed Substation site to assess the extent of impact on the common people.

Figure 7.1 *Consultations with Local Communities*



Consultation at Hesal village

The brief outcome of the consultations with the key stakeholder groups are listed below.

7.3 *SUMMARY OF STAKEHOLDER CONSULTATIONS*

ERM undertook consultations/ meetings with identified stakeholders during the course of the site visit. The intensive deliberations provided a platform for

two-way communication between the team of consultants and the stakeholder groups. This in turn helped in developing an understanding of the perceptions of stakeholders with regards to the project and also allowed for a means of recording their feedback. The key points discussed with each of these stakeholders are provided in the table below:

Table 7.2 Stakeholders and Key Points Discussed

S. No.	Stakeholder Category	Key Points Discussed	Finding of the Consultation
Local Community			
1.1	Local Community (Location- Hesal village; Date- 17/08/2017; Number of participants- 5 people) Location-Hesal Colony Date- 19/12/2017 Participant- 6 People	<ul style="list-style-type: none"> • Current engagement scenario –livelihood options; • Basic amenities in the village – electricity, drinking water, etc.; • Health scenario in the village and distances of Hospitals/ Clinics; • Perception of local community towards the project; 	<ul style="list-style-type: none"> • Most of the people in nearby villages like Hesal and Berwari are involved in agriculture. • Most of agricultural land is mono cropped and agricultural activity are totally dependent of Rain water. • Paddy is the main agricultural produce of the area. Other than that vegetable are also produced. • People are also involved as day labour, worker in Ranchi city. • Ground water is the main source of drinking water. Tube well is mainly used for abstracting ground water. Other than that well are also present at individual level • Community face problem related to drinking water during dry season • Toilets area present only in few household. Community mainly practice open defecation • Health facility is the main problem area for the local community. There no health facility present in nearby villages. Community has to depend on health facility present in Angara area. • Local people are very positive about the proposed project. They expect some work during construction activity. • Satvari site located beside the northern boundary site of proposed site is mainly used by Munda tribe residing in Hesal colony. Consultation with local tribal people also reveals that they were use this place for after funeral ritual for at least four generation and this is culturally sensitive place for them. • They also express their desire that this place should not be disturbed both during construction and operation.
Institutional Stakeholders			
2.1	District Administration	<ul style="list-style-type: none"> • Transfer of Land 	<ul style="list-style-type: none"> • District administration transfer land to JUSNL after receiving the letter from JUSNL for allotting land for GSS construction.

8.1 *MITIGATION MEASURES & MANAGEMENT PLAN*

This document provides the Environmental Management Plan (EMP) for the planning, construction and operation of the Project life cycle which is described in *Table 8.2*. This ESMP provides an action plan against each of the mitigations measures identified for an impact identified in the earlier section. It also defines the actions to be taken to check and monitor compliance and effectiveness of the mitigation measures to which JUSNL is committed. In addition, this EMP is used to ensure compliance with statutory requirements and World Bank safeguards policies

The environmental mitigation measures and plans are presented in form of a matrix according to the sequential flow of activities in the project life cycle. The matrix focuses on strategies to be adopted for safe guard of the environment from possible impacts resulting out of the project activities. These measures would be further updated by Contractor during the implementation of the EMP.. To ensure that the conditions specified in the ESMP are adequately implemented by the Contractor General and Special Conditions of Contract has been developed. The General and Special Conditions of Contract are presented in *Annexure 2* and *Annexure 3* respectively.

Table 8.1 *Environment and Social Management Plan*

SI No	Project Phase/Activity	Potential Impacts	Proposed Mitigation Measures	Responsibility
Planning/Preconstruction				
1	Substation location and design	Conflict with community	Careful design of site to avoid damages to the Satvari located just outside the northern boundary of proposed site	Design Consultant/ Contractor
2	Design of residential quarter and office at substation	Water/soil pollution	Septic Tank with soak pit to be designed as per IS: 2470 (Part-1) - 1985 (Code of Practice for Installation of Septic Tank).	Design Consultant/ Contractor
Construction				
3	Site preparation and construction work	Loss of topsoil	<ul style="list-style-type: none"> • Top soil from the construction site will be stripped before commencement of construction work; • Top soil will be stored in a dedicated top soil storage site, having adequate mitigation measures for preventing erosion due to runoff; • Activities will be scheduled (as far as possible) to avoid extreme weather events, such as heavy rainfall; • Top soil will be used for landscaping within the GSS site. 	Contractor
3.1		Noise and vibrations	All equipment/machineries to be regularly maintained to ensure efficient operation	Contractor
3.2			DG sets with acoustic enclosure should be used	Contractor
3.3			Construction work during night time (10 pm to 6 am) to be prohibited. In case of emergency work at night approval of JUSNL Division/ Circle is mandatory	Contractor
3.4		Air Pollution	Water sprinkling to be carried out twice a day during dry season on exposed surface area.	Contractor
3.5			Vehicles transporting loose construction/excavated materials shall be covered with tarpaulin sheets.	Contractor

SI No	Project Phase/Activity	Potential Impacts	Proposed Mitigation Measures	Responsibility
3.6	Community Health and Safety	Water/Soil Pollution	Loose construction material/ excavated material shall be stored against any structure or would be kept covered with tarpaulin sheet at the construction site.	Contractor
3.7			All vehicles utilized in transportation of raw materials and personnel, will have valid Pollution under Control Certificate (PUCC)	Contractor
3.8			Regular maintenance of machines, equipment and vehicles that will be used for construction activities of substation/tower construction	Contractor
3.9			Septic tanks and soak pits/modular bio-toilets would be provided at all construction site and labour camp	Contractor
3.10			<ul style="list-style-type: none"> A peripheral site drainage channel would be constructed at the beginning of the construction work. The peripheral site drainage channel would be provided with a sedimentation tank to prevent sediments to be carried away by the runoff. Storm water drainage should not be discharged to into any agricultural field. 	Contractor
3.11		Depletion of water resource	Consumption of water would be reduced to the extent possible through the application of water conservation measures and through reuse/recycling of water, wherever possible.	Contractor
3.12		Alteration /diversion of natural drainage channel	Existing micro drainage channel passing through the GSS site would be redirected along the boundary of the GSS site to prevent any waterlogging within premises.	Contractor
4	Community Health and Safety	Injury and sickness of local people	<p>Coordination with local communities for construction schedules;</p> <p>Access restriction for local people at the construction site.</p> <p>Undertaking regular health check-ups of the</p>	Contractor

SI No	Project Phase/Activity	Potential Impacts	Proposed Mitigation Measures	Responsibility
			work-force and reporting any major illnesses at the earliest to Block health officer for disease control and surveillance.	
4.1		Local Woman Community	<p>Creating mass and labour awareness on HIV and STDs;</p> <ul style="list-style-type: none"> • Labour Camp should be located away from the village and it should be access control for the local people. • Awareness should be created among the migratory labour that they should not be entered in the village without prior information to the villagers. • Local resource like handpump, bathing ghat should not be used by the labours. 	Contractor
5	Occupational health and safety	Injury and sickness of workers	<ul style="list-style-type: none"> • Provide safety equipment's (PPEs) for construction workers; • Prevent entry of unauthorised person at construction site; • Provide training on health and safety to all the workers. 	Contractor
6	Blasting (in case of hard rock formation)	Noise and Vibration	Adopt appropriate engineering safeguards to meet the regulatory standard [DGMS Prescribed Permissible Limit of Ground Vibration (refer Annex 6)] for blasting operation.	Contractor
6.1		Damage to Structure	In case there are any damages to the structures due to blasting, the same will be assessed and would be repaired	Contractor
6.2		Occupational health and safety	<ul style="list-style-type: none"> • Implement mitigation measures to control fly rock; • Secure and limit access to blasting areas to qualified personnel involved in, and necessary for, blasting operations; 	Contractor

SI No	Project Phase/Activity	Potential Impacts	Proposed Mitigation Measures	Responsibility
7	Health, Hygiene, Safety and Security of Workers in Labour Camp	Labour camp related EHS and Hygiene Issues	<ul style="list-style-type: none"> • Arrange for adequate safety measures (as per Explosives Rules, 2008) for transport and storage of explosives; • Provide protective equipment to all the personnel engaged in blasting activity. <p>Facilities would be provided at the labour camp as per provisions of IFC Guidance Note on Worker's Accommodation 2009. Some of the relevant provisions to be complied are as follows:</p> <ol style="list-style-type: none"> 1. Worker's accommodation; 2. Provision of safe drinking water; 3. Appropriate arrangement for cooking; 4. Management of waste water and solid waste from the camp site; 5. Availability of medical facility (first aid) 6. Security arrangement of the camp site. 7. Arrangement to register and redress grievance of workers. <p>Refer Annexure 7 for detail guideline.</p>	Contractor
7.1		Conflict with local population due to disturbance on religious/cultural site	<ul style="list-style-type: none"> • Boundary wall or fencing should be constructed before commencement of construction work • Labour camp should be located away from the satvari • Any kind of waste should not be dumped on side of the satvari. • Awareness camp for labour regarding the sensitivity of the satvari site should be organised on regular interval 	Contractor
Operation and Maintenance				
8	Drainage of storm water	Water/Soil Pollution	<ul style="list-style-type: none"> • All internal drainage channels from the substation site would be connected to a peripheral site drainage channel. • The peripheral site drainage channel would be provided with a sedimentation tank and oil-water separator to prevent sediments and oil & grease to be carried away by the runoff. • Storm water drainage should not be 	Contractor

SI No	Project Phase/Activity	Potential Impacts	Proposed Mitigation Measures	Responsibility
9	Handling and disposal of waste	Water/Soil Pollution	<p>discharged to into any agricultural field. The municipal solid waste would be composted in composting pits</p> <ul style="list-style-type: none"> • Authorization for hazardous waste generation (used transformer oil) should be obtained from the Jharkhand State Pollution Control Board ⁽¹⁾; • Hazardous waste need to be disposed through CPCB/PCB authorised recyclers; • Annual return [Form 4 Hazardous and Other Wastes (Management and Transboundary Movement) Rules, 2016] to be submitted to JSPCB. 	<p>JUSNL Subdivision Office</p> <p>JUSNL Subdivision Office</p>
10	Storage and handling of SF6	Emission of most potent GHG causing climate change	<p>Procedure would be put in place for storage, handling and refilling of SF6 gas cylinders. Every refill would be documented and any unusual variation in gas volume would be reported to JPSIP for review and rectification. Each and every leakage will be promptly detected, addressed and documented and reported to the JUSNL Management.</p>	JUSNL Subdivision Office
11	Occupational health and safety of staff	Injury/ mortality to staff during O&M work	<p>During the testing and charging of electrical lines and substation, electricity insulating protective equipment like footwear (ISO 20345: 2004 Part-2), rubber gloves (IS 4770: 1991) would be provided to workers. In addition, provisions of the "Central Electricity Authority (Measures Relating to Safety and Electric Supply) Regulations 2010" would be adhered to.</p>	JUSNL Subdivision Office
11.1			<p>Induction training to all the new employee and six monthly refresher training for substation O&M staff would be organised.</p>	JUSNL Subdivision Office

(1) As per recommendation made by the Jharkhand Pollution Control Board

SI No	Project Phase/Activity	Potential Impacts	Proposed Mitigation Measures	Responsibility
11.2		Injury/ mortality from emergency situation	Preparation of fire emergency action plan and training given to staff on implementing emergency action plan	JUSNL Subdivision Office
12	Community health and safety	Injury/ mortality to public	Integrity of compound wall would be maintained all time	JUSNL Subdivision Office

The monitoring indicators, frequency for measurement and the responsibility for monitoring for each of the mitigations proposed in the management plan are described alongside the mitigation measures proposed in *Table 8.2*. The monitoring of the EMP provisions would be carried out by the respective agencies at a frequency mentioned in the Environmental Management Plan.

For ensuring effective implementation and evaluation of the performance of the environmental mitigation measure a reporting mechanism has been drawn up and presented in *Section 5.3* of the Environmental and Social Management Framework. The reporting of the implementation of the ESMP for this project is presented *Annexure 4*.

Table 8.2 **Environment and Social Monitoring Plan**

SI No	Project Phase /Activity	Potential Impacts	Parameter to be monitored/indicator	Monitoring frequency	Responsibility
Planning/Preconstruction					
1	Substation location and design	Conflict with community	Design consideration to avoid interference with Satvari located just outside the northern boundary of proposed site	Once- during the detailed design	JUSNL Subdivision/Division/Circle Office/ JPSIP PIU
2	Design of residential quarter and office at substation	Water/soil pollution	Provisioning of septic tank with soak pit in substation design	Once- during the detailed design	JUSNL Subdivision/Division/Circle Office/ JPSIP PIU
Construction					
3	Site preparation and construction work	Loss of topsoil	Practice adopted to store and reuse topsoil which is removed from the construction site	Every week	JUSNL Subdivision/Division/Circle Office/ JPSIP PIU
3.1		Noise and vibrations	Maintenance log book of vehicle/machinery , Number of equipment /vehicle undergoing regular maintenance	Every week	JUSNL Subdivision/Division/Circle Office/ JPSIP PIU
3.2			Presence of acoustic enclosure in DG set	Every week	JUSNL Subdivision/Division/Circle Office/ JPSIP PIU
3.3			How many night time approval was taken	Every week	JUSNL Subdivision/Division/Circle Office/ JPSIP PIU
3.4		Air Pollution	Water sprinkling at dust generating area	Every week	JUSNL Subdivision/Division/Circle Office/ JPSIP PIU
3.5			Tarpaulin cover on vehicle carrying loose construction/excavated materials	Every week	JUSNL Subdivision/Division/Circle Office/ JPSIP PIU
3.6			Tarpaulin cover on loose construction/ excavated materials	Every week	JUSNL Subdivision/Division/Circle Office/ JPSIP PIU
3.7			Number of vehicle not having valid PUCC certificate	Every Month	JUSNL Subdivision/Division/Circle Office/ JPSIP PIU
3.8			Maintenance log book of vehicle/machinery, Number of equipment /vehicle undergoing regular maintenance.	Every Month	JUSNL Subdivision/Division/Circle Office/ JPSIP PIU
3.9		Water/Soil Pollution	Availability of Septic tanks and	Every Month	JUSNL Subdivision/Division/Circle

SI No	Project Phase /Activity	Potential Impacts	Parameter to be monitored/indicator	Monitoring frequency	Responsibility
3.10	Community Health and Safety		soak pits/modular bio-toilets Availability of peripheral site drainage channel, sedimentation tank	Every Month	Office/ JPSIP PIU JUSNL Subdivision/Division/Circle Office/ JPSIP PIU
3.11			Depletion of water resource Water conservation measures adopted at construction and labour camp	Every Month	JUSNL Subdivision/Division/Circle Office/ JPSIP PIU
3.12			Alteration /diversion of natural drainage channel Diversions of natural drainage channel passing through the GSS Site	Every Month	JUSNL Subdivision/Division/Circle Office/ JPSIP PIU
4		Injury and sickness of local people	Number of accidents of local people (if any) at construction site, number of grievance recorded Review of document related to regular health check-up of the work force	Every Month	JUSNL Subdivision/Division/Circle Office/ JPSIP PIU
4.1			Review of document related to awareness camp organised periodically Physical observation of the labour camp before commencement of construction and during construction period.	Every Month	JUSNL Subdivision/Division/Circle Office/ JPSIP PIU
5		Injury and sickness of workers	Awareness of workers, use of PPE by workers	Every 15 days	JUSNL Subdivision/Division/Circle Office/ JPSIP PIU
6		Noise and Vibration	Measures adopted to control noise and vibration at blasting site	Every 15 days	JUSNL Subdivision/Division/Circle Office/ JPSIP PIU
6.1		Damage to Structure	Record of any damaged and repaired structure	Every one month	JUSNL Subdivision/Division/Circle Office/ JPSIP PIU
6.2		Occupational health and safety	Measures adopted to control fly rock, safety measures adopted for transport and storage of explosives, use of protective equipment, measures adopted for access restriction at blasting site	Weekly during blasting work	JUSNL Subdivision/Division/Circle Office/ JPSIP PIU

SI No	Project Phase /Activity	Potential Impacts	Parameter to be monitored/indicator	Monitoring frequency	Responsibility
7	Health, Hygiene, Safety and Security of Workers in Labour Camp	Labour camp related EHS and Hygiene Issues	Condition of labour camp, awareness of workers, complainant register	Every 15 days	JUSNL Subdivision/Division/Circle Office/ JPSIP PIU
7.1		Conflict with local population due to disturbance on religious/cultural site	Any registered community grievance regarding the disturbance of satvari site	Every Month	JUSNL Subdivision/Division/Circle Office/ JPSIP PIU
Operation and Maintenance					
8	Drainage of storm water	Water/Soil Pollution	Availability of internal and peripheral site drainage channel, sedimentation tank and oil-water separator at outfall of peripheral site drainage channel	Every Month	JUSNL Subdivision/Division/Circle Office/ JPSIP PIU
9	Handling and disposal of waste	Water/Soil Pollution	Municipal disposal arrangement for GSS, Availability of composting pit		JUSNL Division/Circle/ JPSIP PIU
			Availability of authorization letter, Annual return (Form 4)	Annually	JUSNL Division/Circle/ JPSIP PIU
10	Storage and handling of SF6	Emission of most potent GHG causing climate change	Leakage and gas density/level	Monthly	JUSNL Division/Circle/ JPSIP PIU
11	Occupational health and safety of staff	Injury/ mortality to staff during O&M work	Accident-Incident register	Monthly	JUSNL Division/Circle/ Head Office
11.1			Document pertaining to training/awareness programs and mock drills/awareness level of staff engaged in O&M work of substation	Monthly	JUSNL Division/Circle/ JPSIP PIU
11.2			Injury/ mortality from emergency situation	Accident-Incident list	Monthly
12	Community health and safety	Injury/ mortality to public	Accident-Incident list	Monthly	JUSNL Division/Circle/ Head Office

For the implementation of the Jharkhand Power System Improvement Project JUSNL has developed a Project Implementation Unit (JPSIP PIU). The JPSIP PIU is located at the JUSNL headquarters in Ranchi and is headed by the Chief Engineer (Transmission O&M) i.e. the Project Director (PD). Presently it includes four other members. The JPSIP PIU would also be responsible for driving the implementation of the E&S safeguards in JPSIP.

At the field level the Divisional/ Circle offices of JUSNL, who would be responsible for implementing the technical aspects of the JPSIP; he would also be responsible for the implementation of the E&S safeguards. The Junior Engineer of the respective division of JUSNL responsible for overseeing the project would also be responsible for overseeing that the provisions of the ESMP is being implemented by the Contractor. The Chief Engineer cum GM of the Ranchi Zone however has the ultimate responsibility of ensuring that the project is implemented successfully and also ensuring the project's desired environmental and social outcomes are attained. In addition the Environmental Officer and the Social Officer at the Project Implementation Unit of JPSIP would also undertake periodic site visits to oversee the operations and suggest corrective actions in case it is warranted.

In addition, the Contractor implementing the subprojects would also have an Environment and Social personnel to actually carry out the E&S safeguards on the ground.

8.4

COMMUNICATION PLAN

Through the process of consultation and disclosures, JPSIP would ensure that the project information are communicated to the stakeholder and the feedback from the community is integrated into the execution of the project.

A Consultation Framework has been prepared to ensure involvement of stakeholders' at each stage of project planning and implementation. To ensure community participation at different stages of the project the Consultation framework for JPSIP has been proposed in Table 8.2.

Table 8.3 *Summary of Consultation Framework*

Project Phase	Activity	Details	Responsible Agency	Target Stakeholders
Planning	Securing of Land for substation Site	Identification of sensitivities around the site and common property which might get affected	Contractor along with the JUSNL Circle/Divisional	Community People especially the land owners adjacent to the site, Revenue Officer , Village Panchayat
Construction	Commencement of Construction	Communicate about the activity	Contractor along with the JUSNL	Community People especially

Project Phase	Activity	Details	Responsible Agency	Target Stakeholders
		and period of activity.	Circle/Divisional	the land owners adjacent to the site, Village Panchayat
Operation	Commencement of operation	Communicate about the date of start of operation and charging of substation and associated transmission line	JUSNL Circle/Divisional	Community People especially the located adjacent to the site and transmission line, Village Panchayat

8.5

GRIEVANCE MECHANISM

A three tier Grievance Mechanism would be used for handling any grievances of community related to the project. The Three Tier grievances redressal process is presented in Box 8.1

Box 8.1

Three tier Grievance Redress Mechanism of JPSIP

Tier1: Circle Level: The aggrieved stakeholder can file a complaint with the respective Junior Engineer in charge of the site or at the Divisional/Sub-Divisional Offices of JUSNL. The complaints would be attended to by the Electrical Superintending Engineer of the Ranchi Division and all the Executive Engineers and Assistant Engineers in the Ranchi circle within 21 days of the filing of Complaint. In case the aggrieved is not satisfied with the solution provided Tier 1 he may escalate it to Tier 2: Zone Level.

Tier 2: Zone Level: The Chief Engineer cum GM of Ranchi Zone and all the Superintending Engineers of the Ranchi Zone would be the members of Tier 2 level. They would hear the aggrieved and also review the proceedings of the Ranchi Division and provide relief to the aggrieved. The entire process would be completed within 45 days of the complaint being referred to Tier II. Unsatisfied with the solution the Complainant can approach the Tier III: GRC Level.

Tier 3: Grievance Redresses Cell (GRC): The GRC for JPSIP would be housed at the JPSIP-PIU. The cell would be headed by the Managing Director, JUSNL or his representative not below the rank of Director (Projects). It would have the Director Projects, JUSNL Chief Engineer (Transmission (O&M), Superintendent Engineer, JPSIP-PIU, Executive Engineer (JPSIP-PIU) as members. The Chief Engineer of Ranchi Zone would be an invited member. Hearing the complaint the GRC would provide its decision. The process at the GRC would be completed with 60 days of the complaint being registered in Tier 3.

Court of Law: If the grievance/ complaint is not resolved at GRC Level or the complainant is not satisfied with the solution provided by GRC, the person may approach the Court of Law.

Mechanism for Registering and Communicating grievances

The Junior Engineer responsible for overseeing the activities of the project would be the first point of contact for registering the grievance. He shall be responsible for registering all grievances in the Grievance Form. The Grievance Form (*Annexure 6*) would be placed at the Office of the Junior

Engineer of the respective sub-division and would also be available with the Supervisor of the Contractor. The contact number of the Junior Engineer shall also be displayed prominently at the site of the construction activity. The aggrieved person can either fill the Grievance Redress form and submit it at the nearest sub-division office of JUSNL or call up the Junior Engineer and register the grievance. The Junior Engineer in the latter case completes the grievances Redress Form and pass it to the Tier 1 for redressal. The outcome of the grievances redressal process shall be sent to the person registering the grievance by Registered Post

It is understood from the ESIA study that the Project activities related to the development of the substation may create some impacts on air quality, community health and safety during the construction phase. However all these impacts are temporary and can be mitigated with proper mitigation measures. However the development of the 132/33 KV substation would improve the availability of quality power in the region.

The Environmental and Social Management Plan (ESMP) describes mitigation measures for impacts specific to the Project activities and also discusses implementation mechanisms. The implementation of the mitigation measures suggested can help in managing the negative impacts on air quality, ground water etc. whereas the economic opportunities in terms of local employment are assessed as positive.

To conclude, implementation of ESMP will help the Project to comply with national/state regulatory framework as well as to meet World Bank's requirement of the environmental and social performance.

Annexure 1

List of Sub Projects in JPSIP

PHASE-I

Scheme - D			
1	132/33 Kv GSS Irba (2x50 MVA)	100	Zone-I
			Transferred
2	132 kV D/C Irba-Ramgarh Trans. line		50
3	132 kV D/C Irba-Kanke Trans. line		13
4	132 kV D/C Irba-Ratu Trans. line		25
Scheme - E			
1	132/33 kV GSS at Shikaripara (2x50 MVA)	100	Zone-II
			Transferred
2	132 kV D/C 3 Ph. Dumka - Shikaripara Trans. line		40
Scheme - H			
1	132/33 kV GSS at Silli (2x50 MVA)	100	Zone-I
			Transferred
2	132 kV D/C 3 Ph. Silli - Chouka Trans line		46
3	132 kV D/C 3 Ph. Silli - Sikidiri Trans line		32
Scheme - O			
1	132/33 kV GSS at Mahuadanr (2x50 MVA)	100	Zone-IV
			Transferred
2	132 kV D/C 3 Ph. Latehar- Mahuadanr Trans line		45
Scheme - P			
1	132/33 kV GSS at Angada (2x50 MVA)	100	Zone-I
			Transferred
2	132 kV D/C 3 Ph. Silli-Angada Transmission line		43
3	132 kV D/C 3 Ph. Angada-Sikidiri Trans. line		50
Scheme - S			
1	132/33 kV GSS at Jarmundi (2x50 MVA)	100	Zone-II
			Transferred
2	LILO of 132 kV D/C 3 Ph. Dumka-Deoghar Transmission line at GSS Jarmundi		6
Scheme - X			
1	132/33 kV GSS at Chakuliya (2x50 MVA)	100	Zone-III
			Transferred
2	132 kV D/C 3 Ph. Chandil-Chakuliya Trans. line		65
3	132 kV D/C 3 Ph. Bahragora-Chakuliya Trans. line		60
4	132 kV D/C 3 Ph. Dhalbhumgarh-Chakuliya Trans. Line		25
Scheme - Q			
1	132/33 kV GSS at Hansdiha (2x50 MVA)	100	Zone-II
			Transferred
2	LILO of 132 kV Lalmatia-Dumka Trans Line at GSS Hansdiha		35
3	132 kV D/C Hansdiha-Jasidih Trans Line		52
Scheme - T			
1	132/33 kV GSS at Amarapara (2x50 MVA)	100	Zone-II
			Transferred
2	132 kV D/C 3 Ph. Amarapara-Godda Transmission line		80

3	132 kV D/C 3 Ph. Amarapara - Pakur Trans. line		45
4	132 kV D/C 3 Ph. Amarapara-Dumka Transmission line		50

PHASE-II (7)

Scheme-A			
1	132/33 kV GSS at Chainpur (2x50 MVA)	100	Zone-I Identified
2	132 kV D/C 3 Ph. Chainpur-Mahuandanr Tran. line		42
3	132 kV D/C Chainpur-Gumla Trans. Line		50
Scheme - G			
1	132/33 KV GSS Sundarnagar (2x50 MVA)	100	Zone-III Transferred
2	132 kV D/C 3 Ph. Sundarnagar - Jadugoda		30
Scheme - K			
1	132/33 kV GSS at Ramkanda (2 x 50 MVA)	100	Zone- IV Not Identified
2	132 kV D/C 3 Ph. Ramkanda - Garhwa Trans line		60
Scheme - N			
1	132/33 kV GSS at Chhatarpur (2x50 MVA)	100	Zone-IV Identified
2	132 kV D/C 3 Ph. Chhatarpur-Daltonganj Transmission line		50
3	132 kV D/C 3 Ph. Chhatarpur-Japla Trans.line		40
Scheme - W			
1	132/33 kV GSS at Kalebira (2x50 MVA)	100	Zone-I Identified
2	132 kV D/C 3 Ph. Kalebira-Kamdara Transmission line		40
3	132 kV D/C 3 Ph. Kalebira-Simdega Trans. line		70
Scheme - AA			
1	132/33 kV GSS at Chouka(2x50 MVA)	100	Zone-III Identified
2	132 kV D/C 3 Ph. Chouka - Tamar Trans. line		40
Scheme - R			
1	132 kV D/C Chaibasa-Chakradharpur Trans. Line		22
2	132 kv D/C Nowamundi- Chaibasa Trans. Line		80
3	LILO of one ckt of 132 kV D/C 3 ph Nowamundi- Chaibasa Trans Line at 132/33 kV GSS Kendposi including 2 nos 132 kV bays		14
4	LILO of one ckt of 132 kV D/C 3 ph Chaibasa- Manoharpur Trans Line at 132/33 kV GSS Goelkera including 2 nos 132 kV bays		14
5	132 KV D/C Jadugoda old - Jadugoda New T/L		15

PHASE-III (10)

Scheme - F			
1	132/33 kV GSS at Meral (2 x 50 MVA)	100	Zone-IV Not Identified
2	132 kV D/C Meral - Garhwa Trans. line		20

Scheme - I			
1	132/33 kV GSS at Panki (2x50 MVA)	100	Zone-IV Not Identified
2	132 kV D/C Panki - Chhatarpur trans. line		50
Scheme - J			
1	132/33 kV GSS at Nagar Untari (2 x 50 MVA)	100	Zone-IV Identified
2	132 kV D/C 3 Ph. Nagar Untari-Garhwa Trans. line		40
Scheme - V			
1	132/33 kV GSS at Kandra (2x50 MVA)	100	Zone-III Not Identified
2	LILO of 132 kV Chaibasa-Rajkharsawan at Kandra		10
Scheme- Y			
1	132/33 kV GSS at Kurdeg (2x50 MVA)	100	Zone-I Identified
2	132 kV D/C 3 Ph. Kurdeg-220/132 kV Simdega GSS Transmission line		45
Scheme - Z			
1	132 kV GSS at Chandwa (2x50 MVA)	100	Zone-IV Identified
2	132 kV D/C Chandwa - Latehar Trans. Line		30
Scheme-1			
1	132/33kV GSS at Sarath (2 x 50 MVA)	100	Zone-II Identified
2	132k DC Sarath-Palojori TL		24
3	132k DC Sarath-Madhupur TL		30
4	132k DC Sarath-Chitra TL		20
Scheme-2			
1	132/33kV GSS at Surda (2 x 50 MVA)	100	Zone-III
2	132k DC Surda-Jadugoda TL		19
3	132k DC Surda-Musabani (DVC) TL		5
Scheme-3			
1	132/33kV GSS at Naudiha (Palamu) (2 50 MVA)	100	Zone-IV
2	132k DC Naudiha-Panki TL		74
3	132k DC Naudiha-Chhatarpur TL		19
Scheme-4			
1	132/33kV GSS at Narayanpur (Devipur) (2 x 50 MVA)	100	Zone-II
2	LILO of 132kV DC Jamtara-Madhupur TL at Narayanpur (Devipur)		12

Annexure 2

General Conditions of Contract

1.1 GENERAL EHS CONDITIONS

- GCC 1.1
- i. The contractor shall take all necessary measures and precautions, otherwise ensure that the execution of the works and all associated operations on-site or of-site are carried out in conformity with statutory and regulatory environmental health safety requirements including those prescribed elsewhere in the Environmental and Social Management Framework.
 - ii. The Contractor shall ensure that the construction site will be secured by means of fencing to prevent unauthorized entry into the site. The Contractor shall also ensure that the access to the construction site is restricted to public at all times.
 - iii. The Contractor shall take all the measures and precautions to avoid any nuisance or disturbance arising from execution of the work. This shall, wherever possible, be achieved by suppression of the nuisance at source rather than abatement of the nuisance once generated. The provisions of the Environmental, Social Health Safety Management Plan would be implemented for the suppression of nuisance, but it shall not be limited to these provisions of the ESMP. The provisions of this sub-clause shall however, be disregarded in respect of emergency work required for saving life or the safety of the works.
 - iv. In event of any spoil or debris or silt from the sites being deposited on adjacent land, the Contractor shall immediately remove such spoils, debris or silt and restore the affected area to its original state to the satisfaction of the JUSNL. No debris should be dumped on the community land like Gochars, thans etc. In case the extra excavated earth is placed for levelling the playground the same should be done with the written consent of the community. Such materials should be spread in such a manner as to limit subsequent erosion and shall be re-vegetated as existing ground cover dictates. JUSNL should be absolved of any liabilities arising such works which are undertaken
 - v. Surplus excavated material from the tower footing shall be carried out to the substation for the purpose of filing in case the tower is located within 15 kms of the substation area. The cost of hauling the material shall be considered within the cost for the earthwork for the substation. Additional borrow pits shall only be allowed by the Junior Engineer, only after the excavated material has been exhausted.
 - vi. The Contractor should contain requisite quantity and type of spill kits to control the spills of fuel and other oils e.g. transformer oil to prevent the pollutant from spreading either outside the area of the spill or into the ground.
- GCC 1.2
- a) All fuel and chemical storage shall be sited on an impervious base within an embanked area and secured by fencing. The storage area shall be located away from any watercourse or wetland. The base and walls of the embankment shall be impermeable and of sufficient capacity to contain 110% of the volume of tanks/containers taken together.
- In case of filling/ refuelling of fuel or oil, filling and refuelling shall be strictly controlled and subjected to formal procedures. The contents of any tank or drum shall be clearly marked. Measures shall be taken to ensure that no contamination happens or discharges enter any drain or watercourses. All discharge from the Oil storage areas shall be passed through a Oil Water Separator (OWS) before it being discharged outside.
- b) All internal drainage channels from the site would be connected to a peripheral site drainage channel. The peripheral site drainage channel would be provided with a sedimentation tank and oil-water separator to prevent sediments and oil & grease to be carried away by the runoff.

GCC 1.3

(i) All water and liquid waste products arising on the sites shall be collected and disposed off at location onsite or offsite and in a manner that shall not cause nuisance or pollution.

(ii) The Contractor shall not discharge or deposit any matter arising from the execution of the works into any place except at the designated places without the permission of the Environmental and Social Officer and the regulatory authorities concerned.

GCC 1.4

(i) The Contractor shall carry out dust suppression by sprinkling of water or methods of working to minimise dust, gaseous or other air born emissions and carry out the works in such a manner as to minimise adverse impacts on air quality. Sprinkling of water shall be carried out twice a day on exposed surface area during dry season.

(ii) Stockpiles of materials should be sited in sheltered areas or within hoarding, away from sensitive areas. Stockpiles of friable materials shall be covered with clean tarpaulins with application of sprayed water during dry and windy weather. Stockpiles of debris shall be dampened prior to their movement, except where this is contrary to the specifications.

(iii) Any vehicle with an open load carrying area used for transport of potentially dust producing materials shall have properly fitting side and tailboards. Materials having potential to produce dust shall not be loaded to a level higher than the side and tail boards and shall be covered with clean tarpaulin in good condition. The tarpaulin should be properly secured and extended to at least 300 mm over the edges of the sideboard and tailboard.

(iv) During high wind, no dust generating operations shall be permitted within 200m of residential areas having regard to the prevailing direction of the wind.

(v) Construction vehicles and machinery shall be kept in good working order and engines turned off when not in use. Appropriate measures shall be taken to limit exhaust emissions from construction vehicles, machinery and plant and the contractor shall include details of such proposed measures in the mitigation and monitoring plan to be submitted to the Employer or his representative.

(vi) All vehicle employed in the project shall have valid Pollution under Control (PUC) Certificate. The Contractor should maintain PUC Certificate log book on a regular basis and shall provide it to the Employer or his representation for inspection when asked for.

GCC 1.5

(i) The Contractor shall consider noise as an environmental concern in his planning and during execution of the works.

(ii) The Contractor shall use plant and equipment conforming to National and International standards and directives on noise, vibrations and emissions.

(iii) The Contractor shall take all necessary measures to ensure that operation of all mechanical equipment and construction processes on and off the site shall not cause any unnecessary or excessive noise, taking into account all applicable environmental requirements. The Contractor shall use all necessary measures and shall maintain all plant and silencing equipment in good condition so as to minimise the noise emissions during construction works.

(iv) The operations of the Contractor which is likely to generate noise shall be restricted during the night time (22.00 hrs to 6.00 hrs) especially if it is near residential areas.

GCC 1.6

(i) The Contractor shall take all necessary measures to protect any archaeological

finds or antiquities as required.

- (ii) Where antiquities are shown on the drawing or otherwise identified during the course of the works, these shall be protected by means of suitable fencing and barriers to the satisfaction of the EHS Engineer of JUSNL. The Contractor shall abide by the provisions of the Indian Treasure Trove Act, 1878, Jharkhand Ancient Monuments and Archaeological Sites, Remains and Art Treasures Act, 2016.
- GCC 1.7 On completion of the works, the Contractor shall reinstate all areas with natural vegetation to the satisfaction of the Environmental Officer of JPSIP PIU. Where directed by the Environment Officer the Contractor shall improve and reinstate the land on which informal roadside service area have been established by removing all debris and contaminated soils, re-grading to natural ground levels and re-establishing the natural vegetation where appropriate. All debris and contaminated materials shall be disposed off site as approved by the Environment Officer at the PIU.
- GCC 1.8 The Contractor shall ensure that the labour accommodation within the site /fly camp/ laydown area is provided with toilets/modular bio-toilets, septic tank and soak pits. The municipal solid waste generated shall be composted in pits located within the site.
- GCC 1.9 The Contractor shall adopt all possible means to ensure that groundwater usage is minimised during the construction activities. The bore well/s used for extraction of water for construction purpose shall be provided with water metres to monitor the ground water abstraction. The Contractor should maintain a daily water abstraction log book of water extracted from the bore well. Daily water abstraction log book should be produced to the employer or his representative on demand.

1.2 COMPLIANCE WITH LABOUR REGULATIONS

- GCC 2.1 During continuance of the contract, the Contractor and his sub-contractors shall abide at all times by all applicable existing labour enactments and rules made thereunder, regulations notifications and byelaws of the State or Central Government or local authority and any other labour law (including rules), regulations byelaws that may be passed or notification that may be issued under any labour law in future either by the State or the Central Government or the local authority. The employees of the Contractor and the Sub-contractor in no case shall be treated as the employees of the Employer at any point of time.
- GCC 2.2 The Contractor shall keep JUSNL indemnified in case any action is taken against the Employer by the competent authority on account of contravention of any of the provisions of any Act or rules made thereunder, regulations or notifications including amendments.
- GCC 2.3 If the Employer is caused to pay under any law as principal employer such amounts as may be necessary to cause or observe, or for non-observance of the provisions stipulated in the notifications / byelaws/ Acts / Rules/regulations including amendments, if any, on the part of the Contractor, the Employer shall have the right to deduct any money due to the Contractor under this contract or any other contract with the employer including his amount of performance security for adjusting the aforesaid payment. The Employer shall also have right to recover from the Contractor any sum required or estimated to be required for making good the loss or damage suffered by the Employer.
- GCC 2.4 The contractor shall abide by the provision of the following acts:
- a) Workmen Compensation Act 1923
 - b) Payment of Gratuity Act 1972
 - c) Employee P.F. and Miscellaneous Provision Act 1952
 - d) Maternity Benefit Act 1951:
 - e) Contract Labour (Regulation & Abolition) Act 1070
 - f) Minimum Wages Act 1948
 - g) Payment of Wages Act 1936
 - h) Equal Remuneration Art 1970

- i) Payment of Bonus Act 1965
- j) Industrial Dispute Act 1947
- k) Industrial Employment (Standing Orders) Act 1946
- l) Trade Unions Act 1926
- m) Child Labour (Prohibition & Regulation) Act 1986
- n) Inter-State Migrant workmen's (Regulation of Employment & Conditions of Service Act 1979
- o) The Building and Other Construction workers (Regulation of Employment and Conditions of Service) Act 1996 and the Cess Act of 1996
- p) Factories Act 1948

GCC 2.5. During continuance of the contract, the Contractor and his sub-contractors shall abide at all times by all applicable existing World Bank Group labour requirements (refer **Annex11** Management of Labour Influx of the Environmental and Social Management Framework)

1.3 COMPLIANCE TO ENVIRONMENTAL & SOCIAL REGULATIONS

- GCC 3.1 If the employer is caused to pay under any law as proponent such amounts as may be necessary to cause or observe, or for non-compliance of the provisions or negligence of the Contractor for any provision stipulated in the notifications / byelaws/ Acts / Rules/regulations including amendments and Orders of the Hon'ble National Green Tribunal/ Hon'ble Court of Law, if any, on the part of the Contractor, the Employer shall have the right to deduct any money due to the Contractor under this contract or any other contract with the employer including his amount of performance security for adjusting the aforesaid payment. The Contractor shall ensure to adhere provisions of the following acts;
- a) The Water (Prevention and Control of Pollution) Act, 1974
 - b) The Air (Prevention and Control of Pollution) Act, 1981
 - c) The Environment (Protection) Act 1986
 - d) The Public Liability Insurance Act, 1991
 - e) Wild Life Protection Act, 1972, as amended
 - f) Forest Conservation Act, 1980 & Forest Conservation Rules, 2003 (as amended) & corresponding orders and judgements
 - g) Jharkhand Biological Diversity Rules 2007
 - h) Ancient Monuments & Archaeological Sites and Remains Act, 1958
 - i) Indian Treasure Trove Act, 1878
 - j) Jharkhand Ancient Monuments and Archaeological Sites, Remains and Art Treasures Act, 2016
 - k) Jharkhand Timber and Other Forest Produce (Transit and Regulation) Rules, 2004
 - l) Ozone Depleting Substances (Regulation and Control) Rules, 2000
 - m) Chota- Nagpur Tenancy Act, 1908
 - n) Santal Pargana Tenancy Act, 1949
 - o) Hazardous and Other Wastes (Management and Transboundary Movement) Rules, 2016
 - p) E-Waste (Management) Rules, 2016
 - q) Battery (Management & Handling) Rules 2001
 - r) Ozone Depleting Substances (Regulation and Control) Rules, 2000
 - s) Central Ground Water Authority (CGWA) Public Notice dated 4th January 2017
 - t) Regulation of Polychlorinated Biphenyls Order, 2016
- GCC 3.2 (i) If the Employer is caused to pay under any law as principal employer such amounts as may be necessary to cause or observe, or for non-observance of the provisions stipulated in the notifications / byelaws/ Acts / Rules/regulations including amendments, if any, on the part of the Contractor, the Employer shall have the right to deduct any money due to the Contractor under this contract or any other contract with the employer including his amount of performance security for adjusting the aforesaid payment. The Employer shall also have right to recover from the Contractor any sum required or estimated to be required for making good the loss or damage suffered by the Employer.
- (ii) The Contractor shall (a) abide by the Environmental Management Plan (b) carry out all the monitoring and mitigation measures set forth in the environmental management plan and (c) allocate the budget required to ensure that such measures are carried out. The Contractor shall submit to the Employer Monthly Reports on the carrying out of such measures.
- (iii) The Contractor shall adequately record the conditions of roads, agricultural land and other infrastructure prior to transport of material and construction commencement before start of the construction activity. In case of deterioration during the construction activity the Contractor shall fully reinstate pathways, other local infrastructure and agricultural land to at-least their pre-project condition upon construction completion. In case of any grievance of the community regarding damage to any common property e.g. roads/ walkways/ pathways, bridges, wells or any place of worship due to any construction activity;

it shall be the responsibility of the Contractor to reinstate the same to its original condition (before the start of construction) unless other he can prove that the same was not constructed due to his activities.

(iv) The Contractor shall undertake detailed survey of the affected persons during transmission line alignment finalization under the Project, where applicable. The Contractor shall provide the information to the employer for records and use wherever required. Any compensation due to the damage of property shall be commensurate to the provisions in the entitlement matrix.

(v) The Contractor shall include a Social Officer in his team. The Social Officer shall explain to the land owners the process of the procurement of land through a negotiated settlement process.

(vi) The Contractor shall conduct health and safety programme for workers employed under the Contract and shall include information on the risk of sexually transmitted diseases, including HIV/AIDS in such programs.

- GCC 3.3 The procurement or deployment of any machinery by the Contractor for the project should be in accordance to the environmental rules and regulations in place at the time of implementation. All DG sets should conform to the CPCB standards for noise and emission mentioned under the Environment (Protection) Act, 1986.
- GCC 3.4 The Contractor shall procure transformer oil in conformance to the Regulation of Polychlorinated Biphenyls Order, 2016.
- GCC 3.5 The Contractor shall procure CFC free equipment in conformance to the Government of India Guidelines

1.4 SAFETY PRECAUTIONS

- GCC4.1 The Contractor shall observe all applicable regulations regarding safety on the Site.
Unless otherwise agreed, the Contractor shall, from the commencement of work on Site until handing over, provide:
- a) fencing, lighting, guarding, putting up reflective strips and watching of the Works wherever required, and
 - b) temporary roadways, footways, guards and fences which may be necessary for the accommodation and protection of Employer / his representatives and occupiers of adjacent property, the public and others.
- GCC 4.2 The Contractor shall ensure proper safety of all the workmen, materials, plant and equipment belonging to him or to the employer or to others, working at the Site. The Contractor shall also be responsible for provision of all safety notices and safety equipment required both by the relevant legislations or as may be directed by the Engineer of JUSNL or as he may deem necessary.
- GCC 4.3 The Contractor will notify well in advance to the JUSNL Division / JPSIP PIU of his intention to bring to the site any container filled with liquid or gaseous fuel or explosive or petroleum substance or such chemicals which may involve hazards. The JUSNL Division /JPSIP PIU shall have the right to prescribe the conditions, under which such container is to be stored, handled and used during the performance of the works and the Contractor shall strictly adhere to and comply with such instructions. The JUSNL Division / JPSIP PIU shall have the right at his sole discretion to inspect any such container or such construction plant/equipment for which material in the container is required to be used and if in his opinion, its use is not safe, he may forbid its use. No claim due to such prohibition shall be entertained by JUSNL. JUSNL shall not entertain any claim of the Contractor towards additional safety provisions/conditions to be provided for/constructed as per the JUSNL Division /JUSNL PIU Instructions. Further, any such decision of the JUSNL Division /JUSNL PIU shall not, in any way, absolve the Contractor of his responsibilities and in case use of such a container or entry thereof into the Site area is forbidden by the JUSNL Division /JUSNL PIU, the Contractor shall use alternative methods with the approval of the JUSNL Division /JUSNL PIU without any cost implication to the Employer or extension of work schedule.
- GCC 4.4 All equipment used in construction and erection by Contractor shall meet Indian/International Standards and where such standards do not exist, the Contractor shall ensure these to be absolutely safe. All equipment shall be strictly operated and maintained by the Contractor in accordance with manufacturer's Operation Manual.
- GCC 4.5 Periodical examinations and all tests for all lifting/hoisting equipment & tackles shall be carried-out. In accordance with the relevant provisions of Factories Act 1948, Indian Electricity Act 1910 and associated Laws/Rules in force from time to time. A register of such examinations and tests shall be properly maintained by the Contractor and will be promptly produced as and when desired by the JUSNL Division /JUSNL PIU or by the person authorised by him.
- GCC 4.6 The Contractor shall provide suitable personal safety equipment of prescribed standard to all employees and workmen according to the Job Safety Analysis carried out by the Contractor, or as may be directed by the Employer. The Employer or his representative will also have right to examine these safety equipment to determine their suitability, reliability, acceptability and adaptability. The Contractor shall arrange biannual safety training for all workers.
- GCC 4.7 The Contractor shall provide safe working conditions to all workmen and employees at the Site including safe means of access, railings, stairs, ladders, scaffoldings etc. The scaffoldings shall be erected under the control and supervision of an experienced and competent person. For erection, good and standard quality of material only shall be used by the Contractor.

- GCC 4.8 The Contractor shall not interfere or disturb electric fuses, wiring and other electrical equipment belonging to the Owner or other Contractors under any circumstances, whatsoever, unless expressly permitted in writing by the Employer to handle such fuses, wiring or electrical equipment.
- GCC 4.9 Before the Contractor connects any electrical appliances to any plug or socket belonging to the other Contractor or the Employer, he shall:
- Satisfy the JUSNL Division /JUSNL PIU that the appliance is in good working condition;
 - Inform the JUSNL Division /JUSNL PIU of the maximum current rating, voltage and phases of the appliances;
 - Obtain permission of the JUSNL Division /JUSNL PIU detailing the sockets to which the appliances may be connected.
- GCC 4.10 The JUSNL Division /JUSNL PIU will not grant permission to connect until he is satisfied that:
- The appliance is in good condition and is fitted with suitable plug;
 - The appliance is fitted with a suitable cable having two earth conductors, one of which shall be an earthed metal sheath surrounding the cores.
- GCC 4.11 No electric cable in use by the Contractor/Owner will be disturbed without prior permission. No weight of any description will be imposed on any cable and no ladder or similar equipment will rest against or attached to it.
- GCC 4.12 No repair work shall be carried out on any live equipment. The equipment must be declared safe by the JUSNL Division /JUSNL PIU and a permit to work shall be issued by the JUSNL Division /JUSNL PIU before any repair work is carried out by the contractor. While working on electric lines/equipment, whether live or dead, suitable type and sufficient quantity of tools will have to be provided by the Contractor to electricians/workmen/officers.
- GCC 4.13 The Contractors shall employ necessary number of qualified, full time electricians/electrical supervisors to maintain his temporary electrical installation.
- GCC 4.14 The Contractor employing more than 100 workmen whether temporary, casual, probationer, regular or permanent or on contract, either directly or through the Contractor shall employ at least one full time officer exclusively as EHS Officer (who shall have a Bachelors degree in Environmental Management/ Environmental Engineering /Environmental Science with additional qualification in safety) to supervise safety aspects of the equipment and workmen, who will coordinate with the Environmental Officer and Social Officer. In case of work being carried out through Sub-Contractors, the Sub-Contractor's workmen/employees will also be considered as the Contractor's employees/workmen for the above purpose.
- Contractor shall employ a social team as it may deem fit. The Social Team would be led by the Social Officer (who shall have degree Sociology/Anthropology/Economics or any other Social Science with experience in handling resettlement of multilateral funded projects) and would assist the Contractor to carry out negotiation with the land owners.
- The name and address of such EHS Officer and Social Officer of the Contractor will be promptly informed in writing to JUSNL with a copy to JUSNL Division /JUSNL PIU before he starts work or immediately after any change of the incumbent is made during currency of the Contract.
- GCC 4.15 In case any accident occurs during the construction/ erection or other associated activities undertaken by the Contractor thereby causing any minor or major or fatal injury to his employees due to any reason, whatsoever. It shall be the responsibility of the Contractor to promptly inform the same to the JUSNL Division /JUSNL PIU in prescribed form and also to all the authorities envisaged under the applicable laws.
- GCC 4.16 The JUSNL Division /JUSNL PIU shall have the right at his sole discretion to stop the work, if in his opinion the work is being carried out in such a way that it may cause accidents and endanger the safety of the persons and/or property,

and/or equipment. In such cases, the Contractor shall be informed in writing about the nature of hazards and possible injury/accident and he shall comply to remove shortcomings promptly. The Contractor after stopping the specific work can, if felt necessary, appeal against the order of stoppage of work to the JUSNL Division /JUSNL PIU within 3 days of such stoppage of work and decision of the JUSNL Division /JUSNL PIU in this respect shall be conclusive and binding on the Contractor.

15 EHS RULES

- GCC 5.1 Each employee of the Contractor shall be provided with initial indoctrination regarding Environment Health and Safety by the Contractor, so as to enable him to conduct his work in a safe and sustainable manner.
- GCC. 5.2 No employee shall be given a new assignment of work unfamiliar to him without proper introduction as to the hazards incident thereto, both to himself and his fellow employees.
- GCC 5.3 Under no circumstances shall an employee hurry or take unnecessary chance when working under hazardous conditions.
- GCC 5.4 Employees must not leave naked fires unattended. Smoking shall not be permitted around fire prone areas and adequate firefighting equipment shall be provided at crucial location.
- Employee should also not leave any equipment/machinery /activity unattended if it has the potential to cause harm to the environment
- GCC 5.5 Employees under the influence of any intoxicating beverage, even to the slightest degree shall not be permitted to remain at work.
- GCC 5.6 The contractor shall make suitable arrangement at every work site for rendering prompt and sufficient first aid to the injured.
- GCC 5.7 The staircases and passageways shall be adequately lighted.
- GCC 5.8 The employees when working around moving machinery must not be permitted to wear loose garments. Safety shoes, safety helmets (IS 2925: 1984) are recommended when working in the construction site or any activity related to the project where materials or tools are likely to fall. When working at height the Contractor shall ensure that all employees use full body harness (as per IS 3521: 1999). Only experienced workers shall be permitted to go behind guard rails or to clean around energized or moving equipment. The employer shall at periodic intervals or as he may deem fit inspect these equipment and ask the Contractor for replacement of the personal safety equipment.
- GCC 5.9 The employees must use the standard protection equipment intended for each job. Each piece of equipment shall be inspected before and after it is used. During the testing and charging of electrical lines and substation, the Contractor shall provide electricity insulating protective equipment like footwear (ISO 20345: 2004 Part-2), rubber gloves (IS 4770: 1991) to workers. In addition, provisions of the “Central Electricity Authority (Measures Relating to Safety and Electric Supply) Regulations 2010” would be adhered to.
- GCC 5.10 Requirements of ventilation in underwater working to licensed and experienced divers, use of gum boots for working in slushy or in inundated conditions are essential requirements to be fulfilled.
- GCC 5.11 In case of rock excavation, blasting shall invariably be done through licensed blasters and other precautions during blasting and storage/transport of charge material shall be observed strictly.

Annexure 3

Special Conditions of
Contract for Angara
Substation

- SCC 1.1 The Contractor shall ensure that the community property located in the vicinity of the site is not affected in the vicinity in any form.
- SCC 1.2 The Contractor shall ensure that adequate measures are taken that may construction material, debris, waste material is dumped on the said property. The contractor shall ensure that no water or wastewater from the site flows into the said property. The labour quarters or the septic tank , soak pit, waste disposal area should not be located in the area. No constriction activity should be carried out on the said property.
- SCC1.3 The Contractor shall ensure that the people working on site are made aware of the sensitivities associated with the site and that they should not in any for interfere with the said property.
- SCC1.4 The Contractor to ensure that during the thunderstorm no workers are working out in the open areas. This is being considered as a special safety precaution to prevent lighting hazards at site.
- SCC1.5 The Contractor should ensure that the Labour staying at site is provided with water conforming to IS: 10500. In case ground water is being provided with water from tube wells /bore wells the contractor should install adequate filtration systems to remove the fluoride.

Annexure 4

Format for Reporting of ESMP Implementation

JHARKHAND POWER SYSTEMS IMPROVEMENT PROJECT

ENVIRONMENTAL MANAGEMENT PLAN MONTHLY IMPLEMENTATION STATUS REPORT

Name of the Substation_____

Period/Month _____

EMP Refer ence	Activities	Observation/ Status till end of last Observation/ Period	Status till end of this Period
8.	Site Preparation		
8ai	Has the pre-construction equipment checks been carried out (use additional sheets to provide the monitored Leq values)		
8aii	Is regular equipment maintenance being carried out? (Use additional sheets to provide maintenance log)		
8aiv	Has monthly noise monitoring been carried out for DG sets		
8av	Has any permission been provided by Chief Engineer for night time work?		
8bi	Has quarterly air quality monitoring been carried out during the earthwork?		
8biii	Is PUCC certificate log book being maintained on regular basis?		
8biv	Instrument, machine, vehicle maintenance log book should be maintained on regular basis		
10ci	Has the Cut and fill slopes been protected with using standard engineering practices?		
10.ci	Has peripheral site drainage channel and provision of oil-water separator been made for the site?		
10di	Has septic tanks and soak pits/modular bio-toilets would be provided at construction camp?		
10ei	Are best practices been adopted for ground water usage?		
10g	Has the safety practices been undertaken during the construction? Please explain in details whether barricading, reflective tapes has been undertaken?		
10g	What steps has been taken for coordination with local communities?		
10h	What initiatives have been taken to prevent obstruction to traffic?		
12	Please indicate the actions which have been taken to prevent conflicts with local workers?		
13ai	Have the workers been provided with relevant PPE?		
13aai	How many observation on non - compliance in using personal protective equipment?		

EMP Refer ence	Activities	Observation/ Status till end of last Observation/ Period	Status till end of this Period
13bi	Has the Contractor carried out Health Safety training for workers? (Please provide details of training carried out). This should include the details of carrying out the induction training, refresher training etc. Special Condition		
	Has the precautionary measures which were suggested for the cultural property implemented		

Annexure 5

Special Study on Hargari of Munda Tribe

Munda is the third largest tribal community in Jharkhand. They belong to proto-Austraoid ethnicity. The word Munda signifies a special person. The Mundas are the native of Jharkhand and mainly concentrated in Ranchi and parts of districts like Gumla, Simdega and Saraikela-Kharswan. They speak Mundari dialect.

The Mundas live in a mixed village. In each Munda village there are three important sites viz. Sarna, Akhara, Sasan and Hargari (local name Satvari). Sarna is the site for village deity. Akhara is an open space (for Panchayat assemblies and folk dance). The place where the dead body is buried or burnt is called Sasan and Hargari (Local name satvari) is the place where they perform an elaborate secondary burial and large stone has been placed for remembrance. Every munda hamlet has one hargari.

1.1 HARGARI SITE AT PROPOSED SITE

Proposed substation site of Angara located at Hesal village of Angara block which has substantial population (31.50%) of Schedule Tribe (ST) mostly constitutes of munda tribe. There are 3 munda hamlets are present in and around the proposed site among them Hesal colony is located 700 meter away on north of the site and Hargari of this munda hamlet is located just outside the northern corner boundary of the proposed site. Plot number of this site is 4220, Muza- Hesal, Thana no19, Thana Name- Angara. It is also recorded as Hargari of Munda in the land record of Ranchi district. Location of the Hargari site on satellite imagery and mouza sheet are presented in *Figure 1.1* and *Figure 1.2*.

Figure 1.1 Location of Hargari in Mouja Sheet

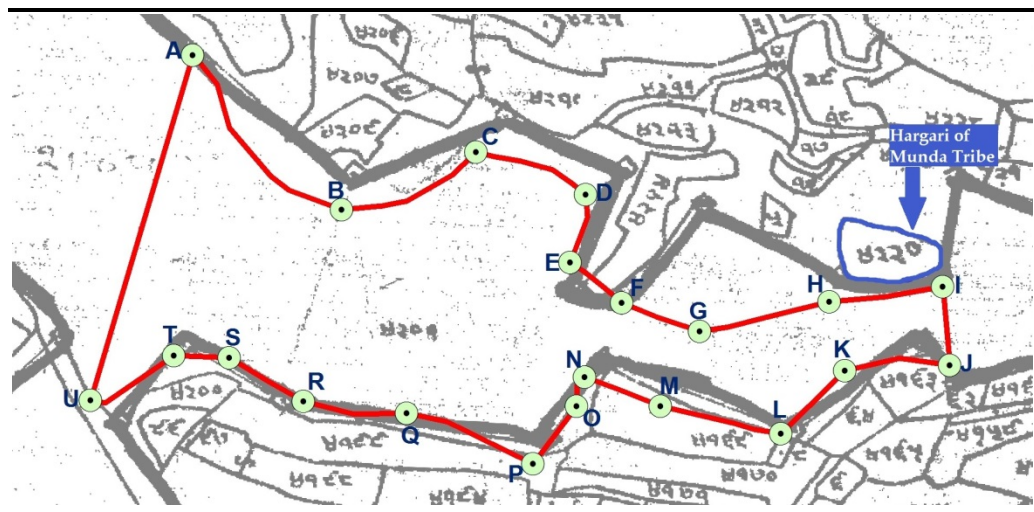


Figure 1.2 *Location of Hargari on Satellite Imagery*



Figure 1.3 *Location of Hesal Village and Access Road of Hargari Site*

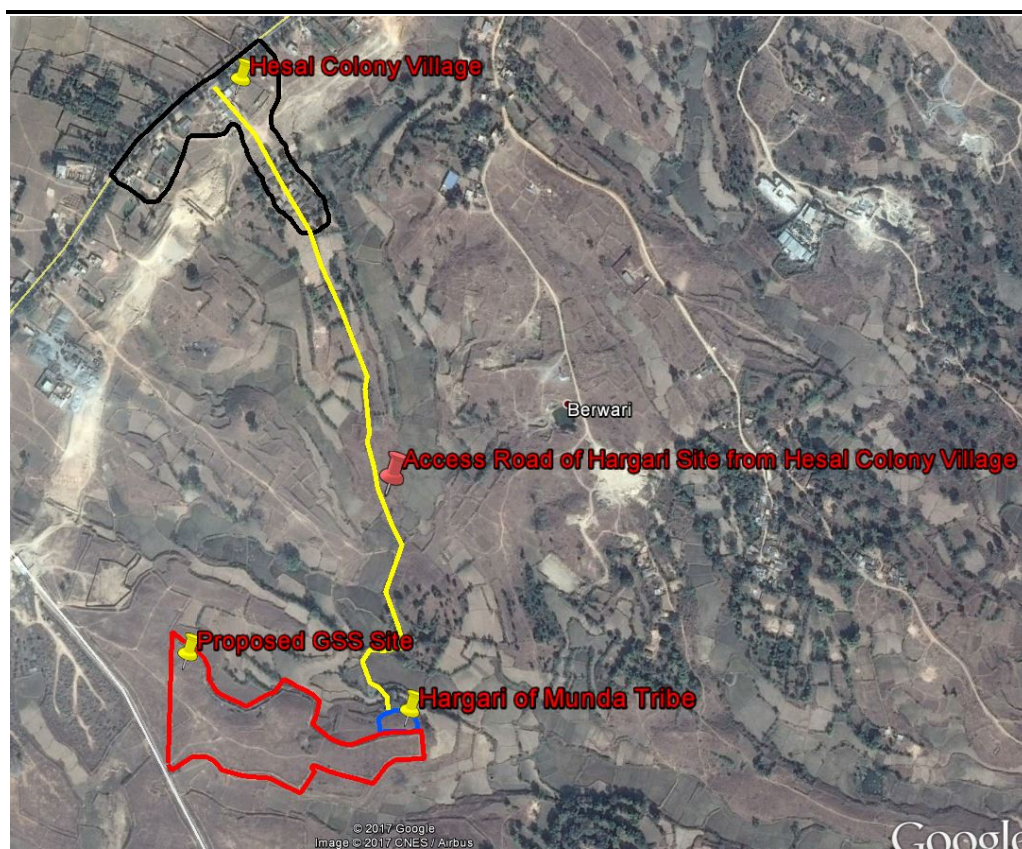


Figure 1.4 *Photographs of Hargari Site*



1.2 *CONSULTATION WITH LOCAL MUNDA PEOPLE*

Consultation with the local resident of Hesal colony also reveals that there are 21 houses are present in the Hesal colony village and all are munda and they perform their funeral ceremony related to secondary burial after nine days of death in that place from 4 to 5 generation and place a large stone on that place. This site only used only by the Munda people of Hesal village and this is a very sacred place for them. The also not allow munda people of other village and hamlet to use this place.

Figure 1.5 *Consultation with Local People*



1.3 *IMPACT ON HARGARI*

Hargari of Munda tribe is very sensitive cultural property for local munda tribe. Though this is located outside the proposed GSS site but it can be adversely impacted both during construction and operation phase by dumping of construction waste, liquid waste generated from the toilet facility both during construction and operation and dumping municipal solid waste. It can create a conflict between JUSNL, contractor and local community.

Mitigation measures are required to maintain the sanctity of this place and interpersonal relationship between JUSNL and local community. Mitigation measures are-

- Project proponent should consult with munda people of Hesal village and their religious head.
- It should be ensured by the project proponent that northern boundary should be properly fenced before commencement of construction work
- No waste both solid and liquid should not be dumped this side.
- Access road for this Hargari site should not be restricted.
- Septic tank and soak pit should not be constructed that side
- Awareness regarding the sensitivity of this cultural site should be built up among the construction worker and GSS employee during operation phase.

Annexure 6

Format for Registering
Grievance from Community/
Project Affected Persons

JHARKHAND POWER SYSTEMS IMPROVEMENT PROJECT

GRIEVANCE REDRESSAL MECHANISM

Format for Grievance Recording

Name of the Village: _____

Name of Block: _____

Name of the Transmission Line: _____

Period/Month: _____

*The project welcomes complaints, suggestions, queries and comments regarding project implementation. We encourage persons with grievance to provide their name and contact information to enable us to get in touch with you for clarification and feedback. Mentioning the name and Contact details are essential as this would help us in getting in touch with you. Should you choose to include your personal details but want that information to remain confidential, please inform us by writing/typing *(CONFIDENTIAL)* above your name.*

Thank you.

Managing Director

Jharkhand Urja Sancharan Nigam Limited

Date

Sub Division of Registration (to
be filled by JE)

Contact Information/Personal Details

Name

Address

Phone Number

Complaint/Suggestion/Comment/Question: *Please provide the details (who, what, where and how) of your grievance below:*

If included as attachment/note/letter, please tick here:

For Official Use Only

Registered by (*Name of the Junior Engineer Registering Grievance*)

Mode of Communication:

1. Letter
2. Verbal/Telephonic

Reviewed by (Name /Position of Official reviewing Grievance)

Action Taken

Whether Action Taken has been communicated to the Complainant:

Yes/No

Annexure 7

DGMS Prescribe Permissible Limit of Ground Vibration

DGMS Prescribed Permissible Limit of Ground Vibration

Type of Structure	Dominant Excitation Frequency, HZ		
	<8 HZ	8-25 HZ	>25 HZ
(A) Building/ Structure not belong to the owner			
1. Domestic house/structures (Kutchcha, Bricks & Cement)	5	10	15
2. Industrial Building	10	20	25
3. Objects of historical & Sensitive Structures	2	5	10
(B) Buildings belongs to the owner with limited span of life			
1. Domestic houses/structures	10	15	20
2. Industrial buildings	15	25	50

Annexure 8

Management Plan for Labour Influx

MANAGEMENT PLAN FOR LABOUR INFLUX

It is envisaged that during construction phase of the project, labourers for various jobs such as civil, mechanical and electrical works will be hired through authorised manpower agencies. The labour requirement will range from 10 to 15 workers for construction of substation. Since these will be employed from outside the region and will therefore, be migrant labourers and hence, accommodation will be provided. These migrant labourers will be accommodated in a temporary campsite within the project area. This could result in stress on local resources, disruption in community relations, and movement of labours.

Objective:

The influx of migrant labour will have both negative and positive impacts on the nearby community and local environment. The labour will be accommodated in temporary campsite within the project boundary which can have significant interface with the nearby community. However, the influx of migrant workers would lead to a transient increase of population in the immediate vicinity of the project area for a limited time. This would put pressure on the local resources such as roads, fuel wood, water etc. Hence, a plan has been designed to demonstrate the:

- Potential impacts associated with influx on the host population and receiving environment are minimized;
- Provision of safe and healthy working conditions, and a comfortable environment for migrant labour; and
- To ensure compliance with the IFC PS 2 and 4 and national labour laws;

IFC Performance Standards:

International Finance Cooperation (IFC) Performance Standard 2- Labour and Working Conditions is specific to labour and working conditions. This Standard focuses on the protection of the basic rights of workers, fostering constructive worker-management relationships, as well as promoting fair treatment and the provision of a safe and healthy workplace. The basic provisions for migrant workers under PS 2 are enumerated below:

- As per the provisions of PS 2, the client shall identify migrant workers engaged through third party and ensure that they are engaged on substantially equivalent terms and conditions to non-migrant workers carrying out similar work (if any);
- The contractor shall ensure provision of adequate accommodation, transportation, and basic services including water, sanitation, and medical care for the workers working on that project;
- The compensation paid to the migrant workers should be non-discriminatory and the principle of equal opportunity and fair treatment to be followed; and
- Wastewater, sewage, food and any other waste materials are to be properly handled, in compliance with local standards- whichever is more

stringent – and without causing any significant impacts to the biophysical environment or surrounding communities.

IFC PS 4 – Community Health, Safety and Security carries health and safety through to the community environment. The objectives of the Performance Standard are:

- To minimise and manage health and safety risks to local communities; and
- To ensure that the project does not harm community health and safety.

General Requirements:

All migrant workers are envisaged to be accommodated in temporary campsite within the project area. If migrant workers are accompanied by their families, provisions should be made accordingly. Guidance on Workers Accommodation developed by IFC and EBRD is also referred for inclusion of requirements for labour camp to be established by contractor during construction phase of the project. Contractor shall ensure implementation of the following measures to minimise the potential negative impacts of worker accommodation and workers on local communities:

Cleanliness: Pest extermination, vector control and disinfection are to be carried out throughout the living facilities in compliance with local requirements and/or good practice.

Complaints and incident reporting: A formal Complaints Procedure will be implemented to ensure timely and transparent response to complaints as received from labour.

Labour education: The workforce will be sensitized to local social and cultural practices through provision of an induction course for all employees that stipulates expected behaviour;

Labour behaviour in campsite provided: A Code of Behaviour governing appropriate behaviour in the accommodation facilities to be kept in place and to be strictly enforced. The contractor shall ensure implementation of the “rules of engagement” between labours living in campsite and community and shall be implemented by construction contractors for all engaged labours. Labour Compensation and Accommodation: Client shall ensure that labours are provided with benefits such as annual leave, weekly rest day, etc. Accommodation to be provided for the construction labour which cover facilities (including catering facilities, dining areas, washing and laundry facilities etc.) and supporting utilities.

Hiring and Recruitment Procedures:

The manpower contractor shall, wherever possible, locally recruit the available workforce and shall provide appropriate and requisite on job and EHS training as necessary. The following general measures shall be considered for the workforce during their employment tenure:

- Project should include a code of conduct relating to the accommodation to be signed with the contract document of contractor.
- The contractor shall not employ any person below the age of 18 years nor will have any forced labour;
- The construction labourers will be provided with documented information regarding their rights under national labour and employment law such as but not limited to Factories Act, Minimum Wages Act, Trade Unions Act and Workmen's Compensation Act;
- First priority for employment of labour should be given those impacted by the project such as landowners who have lost land or those who have their land parcels under ROW;
- No discrimination shall be done by the contractor with respect to recruitment and hiring, compensation (including wages and benefits), working conditions and terms of employment, access to training, job assignment, termination of employment or retirement, and disciplinary practices;
- The contractor to ensure that work hours are set at eight hours a day, 48 hours a week, with a weekly rest day for all engaged labours;
- Every labour is entitled for maximum of only two hours a day as Overtime (OT) work. OT pay is twice the hourly remuneration;
- Project shall ensure equal wages for male and female workers for work of equal nature or value is maintained;
- A grievance redress mechanism for workers shall be put in place by the contractor to raise workplace concerns. The workers will be informed about the grievance mechanism at the time of recruitment; and
- The Project shall ensure that the contractor develops and implement a procedure to review the performance of their sub-contractors, if any.
- The procedure developed should include regular inspection of the camp sites, maintaining information pertaining to labours sourced by sub-contractors;

Workers' Accommodation:

The Project will supervise and monitor the activities performed by their contractor and accommodation facilities provided in the campsite. The following measures shall be provided:

- The labour will be provided with accommodation on twin sharing basis made of insulated material and locally available building material, etc.;
- The migrant workers with families shall be provided with individual accommodation comprising bedroom, sanitary and cooking facilities;
- The units will be supported by common latrines and bathing facilities duly segregated for male and female labour;
- Adequate number of toilets shall be provided in the accommodation facilities. A minimum of 1 unit to 15 males and 1 unit for 10 females shall be provided;
- The contractor shall provide a kitchen facility for the construction workers and the food will be of appropriate nutritional value and will consider religious/cultural backgrounds;

- All doors and windows shall be lockable and mobile partitions/curtains shall be provided for privacy;
- Facilities for the storage of personal belongings for workers shall be provided within the campsite only;
- Dustbins shall be provided for collection of garbage and will be removed on a daily basis;
- It is also required to provide first aid box in adequate numbers; and
- Ventilation should be appropriate for the climatic conditions and provide workers with a comfortable and healthy environment to rest and spend their spare time.

Security:

The contractor shall put in place the following security measures to ensure the safety of the workers. The following measures shall be incorporated:

- Access to the campsite shall be limited to the residing workforce;
- The contractor shall be responsible for deploying adequate number of guards;
- Adequate, day-time night-time lighting shall be provided;
- The security personnel shall be provided with training to respect the community traditions and in dealing with, use of force etc.; and
- The rental accommodation shall be provided with firefighting equipment and portable fire extinguishers.

Provision of Drinking Water:

Access to an adequate and convenient supply of free potable water is necessity for workers. The domestic water supply shall be made available by the contractor.

- Safe drinking water conforming to the IS 10500:2012 for drinking water shall be provided;
- Private tanks can be utilized for provision of drinking water for the migrant labours;
- The direct usage of water from bore well should not be allowed and water shall be adequately treated;
- The Project should regularly monitor the quality of drinking water available. In case of non-compliance with the Drinking Water Specifications, additional treatment shall be provided or alternative sources of water supply shall be arranged; and
- All tanks used for the storage of drinking water are constructed and covered as to prevent water stored therein from becoming polluted or contaminated.

Cooking Arrangement:

The construction phase will involve engagement of large number of migrant people in the project area for a limited time. Hence, there shall be requirement of provision of cooking facilities (kitchen) as listed below:

- Places for food preparation are designed to permit good hygiene practices, including protection against contamination between and during food preparation;
- Adequate personal hygiene including designated areas for cleaning hands and cleaning of utensils; and
- All kitchen floors, ceiling and wall surfaces adjacent to or above food preparation and cooking areas are built using durable, non-absorbent, easily cleanable, non-toxic materials;
- Food preparation area to be durable, easily cleanable, non-corrosive surface made of non-toxic materials.

To ensure that the fuel need of labourers in the project area does not interfere with the local requirements, necessary arrangements for supply of cooking fuel to the labourers shall be done by the contractor. In case, fuel requirement for cooking purposes are only to be met by fuel wood then that must be purchased from authorized vendors.

Waste Water Generation:

There will be generation of wastewater from the campsite. About 80% of water used shall be generated as sewage/wastewater. Contractor shall ensure that the campsite are equipped with septic tank and soak pit for disposal of sewage or with mobile bio-toilets. It is also recommended that the storm water and sewage system should be separate. The surface water drainage shall include all necessary gutters, down pipes, gullies, traps, catch pits, manholes etc. Sanitary and toilet facilities are constructed of materials that are easily cleanable. Sanitary and toilet facilities are required to be cleaned frequently and kept in working condition.

Solid Waste Management:

The solid waste generated from campsite will mostly comprise of compostable wastes like vegetable residues (kitchen waste) and combustible waste like paper, cans, plastic and some non-degradable waste like glass/glass bottles. Improper disposal of solid waste will lead to environmental degradation and health hazards to labour as well as nearby community.

The following measures shall be adopted by contractors for ensuring effective management of solid waste:

- The solid wastes of domestic nature generated shall be collected and stored separately in appropriate containers with proper sealing on them;
- Separate bins with proper markings in terms of recyclable or non-recyclable waste shall be provided in the houses and kitchen premises in sufficient numbers for collection of garbage;
- Food waste and other refuse are to be adequately deposited in sealable containers and removed from the kitchen frequently to avoid accumulation; and
- It is the responsibility of contractor to ensure safe disposal of all wastes generated out of labour camps.

Medical Facility:

Effective health management is necessary for preventing spread of communicable diseases among labour and within the adjoining community. The following medical facilities shall be provided by contractors for the construction workers:

- A first aid centre shall be provided for the labour within the construction site equipped with medicines and other basic facilities;
- Adequate first aid kits shall be provided in the campsite in accessible place. The kit shall contain all type of medicines and dressing material;
- Contractor shall identify and train an adequate number of workers to provide first aid during medical emergencies;
- Regular health check-ups shall be carried out for the construction labourers every six month and health records shall be maintained;
- Labours should have easy access to medical facilities and first aid; where possible, nurses should be available for female workers;
- First aid kits are adequately stocked.
- Information and awareness of communicable diseases, AIDS etc. shall be provided to workers.
- Basic collective social/rest spaces are provided to workers.;

Inspection of camp sites:

- Campsite shall be inspected at frequent intervals to ensure that the facilities are well organized and maintained to acceptable and appropriate standards by the contractor. The key areas are:
- Daily sweeping of rooms and houses shall be undertaken;
- Regular cleaning of sanitary facilities shall be undertaken;
- The kitchen and canteen premises shall be established under good hygiene conditions;
- Daily meal times shall be fixed for the labour;
- Smoking and alcohol consumption shall be prohibited in the workplace;
- Water logging shall be prevented at areas near the accommodation facilities and adequate drainage is to be provided; and
- Checklists pertaining to the daily housekeeping schedule shall be maintained and displayed at houses, toilets and kitchen.

To limit the impact due to cumulative labour onsite during construction phase, contractor shall provide adequate number of labour camps which should be appropriate for its location and be clean, safe and, at a minimum, meet the basic needs of workers.

- Contractor should assess the location of labour camp, that it should not be constructed in immediate vicinity of any drainage channel;
- All tanks used for the storage of drinking and cooking water to be covered as to prevent water stored therein from becoming polluted or contaminated and all the migrant workers will be instructed accordingly;

- Contractor should ensure that accommodation which is provided is not overcrowded and does not pose a risk to the health and safety of workers;
- The labour camp will be equipped with septic tanks and soak pits and avoid presence of stagnant water is a factor of proliferation of potential disease vectors such as mosquitoes;
- Contractor should ensure that the disruption of local communities is minimum and if required limit the worker's movements in the nearby areas;
- Security staff should have a clear mandate and instructions about their duties and responsibilities such as not to harass, intimidate, discipline or discriminate against workers;
- Contractor should ensure that workers and members of the surrounding communities have specific means to raise concerns about security arrangement and staff;

Grievance Redress Mechanism:

A Grievance Redress Mechanism (GRM) shall be formulated for the construction labourers (local and migrant) comprising of a review committee including representatives elected by labour and management representatives. Project can extend the grievance mechanism developed for the project to the contractor also. A documented GRM shall have the following elements:

- Proper system for lodging grievances;
- Provision for raising anonymous complaints;
- Appropriate level of management for addressing concerns;
- Workers and members of the surrounding communities have specific means to raise concerns about security arrangement and staff;
- Provision for timely action and feedback;
- Monitoring and review of grievances raised and action taken; and scope for continual improvement of the system.

Annexure 9

Socio-Economic Survey format

Socio Economic Survey Form for Proposed Grid Sub Station Site of JPSIP

Form No		Village Name	
Domicile No		Name of the Surveyor	
Name of the Informant		Signature	
Relationship with HOH		Date	

A1. What Caste Do You Belong				A2. What is Your Religious Group				A3. Do You Have BPL Ration Card	
General	SC	ST	OBC	Hindu	Muslim	Christian	Sikhs	Yes	No
①	②	③	④	①	②	③	④	①	②

Member Number	1	2	3	4	5	6	7	8	9	10	11	12	
B1.1 Name	HOH												Write down the names of all person who live and eat together in this household (sharing same kitchen) starting with head
B1.2 Relationship													
B1.3 Sex	Is the NAME male or female?												
	M	M	M	M	M	M	M	M	M	M	M	M	
	F	F	F	F	F	F	F	F	F	F	F	F	
B1.4 Age	How old was NAME on the last birthday?												
B1.5 Education	The class till which the person has been educated.												
	①	①	①	①	①	①	①	①	①	①	①	①	Illiterate
	②	②	②	②	②	②	②	②	②	②	②	②	Primary (class 3)
	③	③	③	③	③	③	③	③	③	③	③	③	Secondary (Class 10)
	④	④	④	④	④	④	④	④	④	④	④	④	Higher (graduate)
	⑤	⑤	⑤	⑤	⑤	⑤	⑤	⑤	⑤	⑤	⑤	⑤	Technical
	⑥	⑥	⑥	⑥	⑥	⑥	⑥	⑥	⑥	⑥	⑥	⑥	Vocational
B1.6	Is the NAME working?												
	①	①	①	①	①	①	①	①	①	①	①	①	Yes
	②	②	②	②	②	②	②	②	②	②	②	②	No
B1.7 Occupation	A. The main activity at the place of job?												
	This may have multiple entries												
	①	①	①	①	①	①	①	①	①	①	①	①	Agriculture
	②	②	②	②	②	②	②	②	②	②	②	②	Agri Labour
	③	③	③	③	③	③	③	③	③	③	③	③	Non Agri Labour
	④	④	④	④	④	④	④	④	④	④	④	④	Business/Trade

	⑤	⑤	⑤	⑤	⑤	⑤	⑤	⑤	⑤	⑤	⑤	Govt. Service
	⑥	⑥	⑥	⑥	⑥	⑥	⑥	⑥	⑥	⑥	⑥	Private Service
	⑦	⑦	⑦	⑦	⑦	⑦	⑦	⑦	⑦	⑦	⑦	Maid Servant
	⑧	⑧	⑧	⑧	⑧	⑧	⑧	⑧	⑧	⑧	⑧	Others
B1.8	What was the main reason for the NAME not working?											To be filled for persons who are not working.
	①	①	①	①	①	①	①	①	①	①	①	No work available
	②	②	②	②	②	②	②	②	②	②	②	Seasonal inactivity
	③	③	③	③	③	③	③	③	③	③	③	Household family duties
	④	④	④	④	④	④	④	④	④	④	④	Old/young
	⑤	⑤	⑤	⑤	⑤	⑤	⑤	⑤	⑤	⑤	⑤	Handicapped
	⑥	⑥	⑥	⑥	⑥	⑥	⑥	⑥	⑥	⑥	⑥	Others
B1.9 Income	How much does the NAME earn in a month?											
	①	①	①	①	①	①	①	①	①	①	①	Rs. 0-Rs. 2000
	②	②	②	②	②	②	②	②	②	②	②	Rs. 2000-Rs. 5000
	③	③	③	③	③	③	③	③	③	③	③	Rs. 5000 and 10,000
	④	④	④	④	④	④	④	④	④	④	④	10,000+
C1.1 Skills	What is the skill possessed by the person?											
												e.g.: traditional artisans, carpentry, mason, weaving, garage mechanic, nursery, others (please mention)

D1.1 Which of the following are availed by the family	General Scheme <ol style="list-style-type: none"> 1. Old age Pension Scheme 2. Widow Pension Scheme 3. Pradhanmantri Awas Yojana 4. Chief Minister Health insurance scheme 5. Udyami Sakhi Mandal Yojana (To empower rural women) 6. ARYA scheme (To attract rural youth in agriculture in Jharkhand) 7. Vimrao Ambedkar Awas Yojana for widow in Jharkhand 				
	Scheme for Tribal people <ol style="list-style-type: none"> 1. PTG Dakiya Yojana (Free rice scheme for primitive tribal group) 2. Eklavya Model Residential Schools for Tribal Student 3. Development and Marketing of Tribal Products 4. Scheme for Minimum Support Price for Minor Forest Produce 5. Educational Fellowship and Scholarship for Higher Education of ST Students. 2017-2018" 6. National Overseas Scholarship for ST candidates 7. Pre and Post Matric Scholarship 8. Establishment of Ashram Schools in Tribal Sub-Plan Areas 9. Centrally Sponsored Scheme of Hostels for ST boys and ST Girls 				
	Others (Please Specify) 				
E1.1 Amenities	A. What is the drinking water source for the family?				
	Piped Water <input type="checkbox"/>	Tube Well <input type="checkbox"/>	Well <input type="checkbox"/>	Pond <input type="checkbox"/>	Any other, specify.....
	B. What is the source of water for domestic use?				
	Piped Water <input type="checkbox"/>	Tube Well <input type="checkbox"/>	Well <input type="checkbox"/>	Pond <input type="checkbox"/>	Any other, specify.....
	C. Is the water source used by you or other families also		Only by the HH <input type="checkbox"/>		Shared by other families <input type="checkbox"/>
	D. Availability of Household Electricity			Yes <input type="checkbox"/>	No <input type="checkbox"/>
	E. Are there Primary Schools nearby (within 1 - 1.5 km)			Yes <input type="checkbox"/>	No <input type="checkbox"/>
	F. Are there Secondary Schools nearby				
	G. Are there Colleges nearby				
H. Are there Hospitals nearby		Private Hospital <input type="checkbox"/>	Govt. Hospital <input type="checkbox"/>	None <input type="checkbox"/>	

Annexure 10

Assessment of Impact Significance

Impacts on Aesthetics & Visual Quality

Impact	Aesthetic and visual impact			
Impact Nature	Negative	Positive	Neutral	
Impact Type	Direct	Indirect	Induced	
Impact Duration	Short Term	Medium Term	Long Term	
Impact Extent	Local	Regional	National	
Impact Scale	Low	Medium	High	
Impact Magnitude	Positive	Small	Medium	Large
Resource/ Receptor Sensitivity	Low	Medium	High	
Impact Significance	Negligible	Minor	Moderate	Major
Significance of impact is considered Negligible				

Impacts on Air Quality

Impact	Air quality impact			
Impact Nature	Negative	Positive	Neutral	
Impact Type	Direct	Indirect	Induced	
Impact Duration	Short Term	Medium Term	Long Term	
Impact Extent	Local	Regional	National	
Impact Scale	Low	Medium	High	
Impact Magnitude	Positive	Small	Medium	Large
Resource/ Receptor Sensitivity	Low	Medium	High	
Impact Significance	Negligible	Minor	Moderate	Major
Significance of impact is considered Negligible to Minor				

Impacts on Noise Quality

Impact	Noise quality impact			
Impact Nature	Negative	Positive	Neutral	
Impact Type	Direct	Indirect	Induced	
Impact Duration	Short Term	Medium Term	Long Term	
Impact Extent	Local	Regional	National	
Impact Scale	Low	Medium	High	
Impact Magnitude	Positive	Small	Medium	Large
Resource/ Receptor Sensitivity	Low	Medium	High	
Impact Significance	Negligible	Minor	Moderate	Major
Significance of impact is considered Minor				

Impact on Land use, Soil & Drainage

Impact	Impact on Land use, Soil & Drainage		
Impact Nature	Negative	Positive	Neutral
Impact Type	Direct	Indirect	Induced
Impact Duration	Short Term	Medium Term	Long Term
Impact Extent	Local	Regional	National

Impact Scale	Low		Medium		High	
Impact Magnitude	Positive		Small		Medium	
Resource/ Receptor Sensitivity	Low		Medium			High
Impact Significance	Negligible		Minor		Major	
	Significance of impact is considered Minor					

Impact on Water Resources

Impact	Impact on water resource				
Impact Nature	Negative		Positive		Neutral
Impact Type			Indirect		Induced
Impact Duration			Medium Term		Long Term
Impact Extent			Regional		National
Impact Scale			Medium		High
Impact Magnitude	Positive	Small	Medium		Large
Resource/ Receptor Sensitivity	Low		Medium		High
Impact Significance	Negligible	Minor	Moderate		Major
	Significance of impact is considered Negligible				

Impact on Biological Environment

Impact	Impact to Biological Environment					
Impact Nature	Negative		Positive		Neutral	
Impact Type	Direct		Indirect		Induced	
Impact Duration	Short Term		Medium Term		Long Term	
Impact Extent	Local		Regional		National	
Impact Scale	Low		Medium		High	
Impact Magnitude	Positive	Small	Medium			Large
Resource/ Receptor Sensitivity	Low		Medium		High	
Impact Significance	Negligible	Minor	Moderate		Major	
	Significance of impact is considered Minor to Moderate					

Impact on Socio-economic Conditions

Impact	Impact on Socio-economic Conditions				
Impact Nature	Negative		Positive		Neutral
Impact Type			Indirect		Induced
Impact Duration			Medium Term		Long Term
Impact Extent			Regional		National
Impact Scale			Medium		High
Impact Magnitude	Positive	Small		Medium	Large
Resource/ Receptor Sensitivity	Low		Medium		High
Impact Significance	Negligible	Minor		Moderate	Major

	Significance of impact is considered Minor
--	---

Impact on Community Health and Safety

Impact	Community Health and Safety			
Impact Nature	Negative	Positive	Neutral	
Impact Type	Direct	Indirect	Induced	
Impact Duration	Short Term	Medium Term	Long Term	
Impact Extent	Local	Regional	National	
Impact Scale	Low	Medium	High	
Impact Magnitude	Positive	Small	Medium	Large
Resource/ Receptor Sensitivity	Low	Medium	High	
Impact Significance	Negligible	Minor	Moderate	Major
	Significance of impact is considered Minor			

Impact on Occupational Health and Safety

Impact	Occupational Health and Safety			
Impact Nature	Negative	Positive	Neutral	
Impact Type	Direct	Indirect	Induced	
Impact Duration	Short Term	Medium Term	Long Term	
Impact Extent	Local	Regional	National	
Impact Scale	Low	Medium	High	
Impact Magnitude	Positive	Small	Medium	Large
Resource/ Receptor Sensitivity	Low	Medium	High	
Impact Significance	Negligible	Minor	Moderate	Major
	Significance of impact is considered Moderate			



**ERM has over 160 offices
Across the following
countries worldwide**

Argentina	Netherlands
Australia	Peru
Belgium	Poland
Brazil	Portugal
China	Puerto Rico
France	Singapore
Germany	Spain
Hong Kong	Sweden
Hungary	Taiwan
India	Thailand
Indonesia	UK
Ireland	USA
Italy	Venezuela
Japan	Vietnam
Korea	
Malaysia	
Mexico	

ERM India Private Limited
Building 10, 4th Floor
Tower A, DLF Cyber City
Gurgaon – 122 002, NCR , India
Tel: 91 124 417 0300
Fax: 91 124 417 0301

Regional Office – West
801, 8th Floor, Windfall, Sahar Plaza,
J B Nagar, Andheri (East),
Mumbai – 400 059
Tel : 022 42107373
Fax: 91- 022- 4210 7474

Regional Office – West
702 Abhishree Avenue,
Near Nehru Nagar Circle,
Ambawadi Ahmedabad -380006 India
Tel: +91 79 66214300
Fax: +91 79 66214301

Regional Office -South
Ground Floor, Delta Block
Sigma Soft Tech Park
Whitefield, Main Road
Bangalore- 560 066, India
Tel: +91 80 49366 300 (Board)

Regional Office –East
4th Floor,
Asyst Park, GN-37/1, Sector-V,
Salt Lake City, Kolkata 700 091
Tel : 033-40450300